

**LEGEND**

- 6232000mN GDA94/MGA94 Grid (Zone 56)
- Precinct boundary
- Homestead boundary
- 91 Test Pit where ECe of soil at 1.5m depth was >16 dS/m (highly saline)
- Test Pit where ECe of soil at 1.5m depth was 8 - 16 dS/m (very saline)
- Test Pit where ECe of soil at 1.5m depth was 4 - 8 dS/m (moderately saline)
- Test Pit where ECe of soil at 1.5m depth was 2 - 4 dS/m (slightly saline)
- Test Pit where ECe of soil at 1.5m depth was <2 dS/m (non-saline)

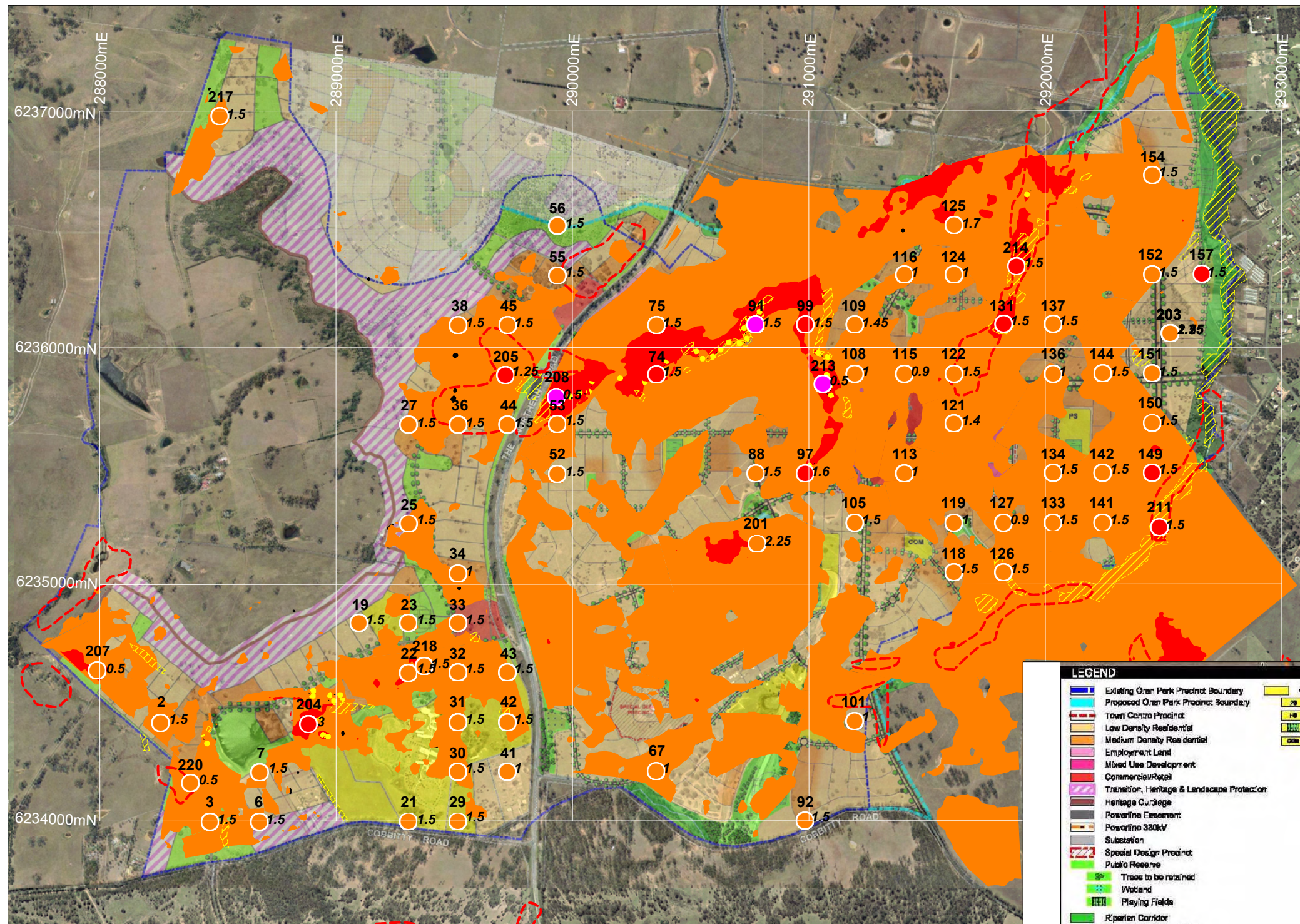
**Douglas Partners**  
Geotechnics . Environment . Groundwater

Sydney, Newcastle, Brisbane,  
Melbourne, Perth, Darwin,  
Wyong, Campbelltown, Canberra  
Townsville, Cairns, Wollongong

TITLE: **APPARENT SALINITY FROM EM31 AND SAMPLE DATA LAND CAPABILITY STUDY ORAN PARK PRECINCT ORAN PARK AND COBBITTY**

CLIENT: APP CORPORATION PTY LTD			
DRAWN BY: JL	SCALE: 1:20,000 @ A3	PROJECT No: 40740	OFFICE: SYDNEY
APPROVED BY:	DATE: FEBRUARY 2007	DRAWING No:	16





**LEGEND**


- Existing Oran Park Precinct Boundary
- Proposed Oran Park Precinct Boundary
- Town Centre Precinct
- Low Density Residential
- Medium Density Residential
- Employment Land
- Mixed Use Development
- Commercial/Retail
- Transition, Heritage & Landscape Protection
- Heritage Curtilage
- Powerline Easement
- Powerline 330kV
- Substation
- Special Design Precinct
- Public Reserve
- Trees to be retained
- Wetland
- Playing Fields
- Riparian Corridor
- Remnant Vegetation
- Creek Lines
- Community
- Primary School
- High School
- Playing Fields
- Community Facilities

Legend for Indicative Layout Plan (ILP) dated 7 Feb 07 (translucent underlay to constraint features)

**LEGEND**

6232000mN GDA94/MGA94 Grid (Zone 56)

- Approximate region of Known Salinity (observed or interpreted from air-photos, DIPNR 2002) where development may be constrained due to surface soil salinity
- Observed salt efflorescence and area of salt-tolerant vegetation indicating regions where development may be constrained due to surface soil salinity
- 91 1.5 Test Pit and depth (m, italics) where ECe of soil fell in the range: >16 dS/m (highly saline)
- Test Pit and depth where ECe of soil fell in the range: 8 - 16 dS/m (very saline)
- Test Pit and depth where ECe of soil fell in the range: 4 - 8 dS/m (moderately saline)
- Approximate region where development may be constrained by very saline soil at depths of the order of 1m
- Approximate region where development may be constrained by moderately saline soil at depths of the order of 1m



**Douglas Partners**  
Geotechnics . Environment . Groundwater

Sydney, Newcastle, Brisbane,  
Melbourne, Perth, Darwin,  
Wyong, Campbelltown, Canberra  
Townsville, Cairns, Wollongong

---

TITLE: **SALINITY CONSTRAINTS  
LAND CAPABILITY STUDY  
ORAN PARK PRECINCT  
ORAN PARK AND COBBITTY**

---

CLIENT: APP CORPORATION PTY LTD

DRAWN BY: JL	SCALE: 1:20,000 @ A3	PROJECT No: 40740	OFFICE: SYDNEY
APPROVED BY:	DATE: FEBRUARY 2007	DRAWING No: 17	