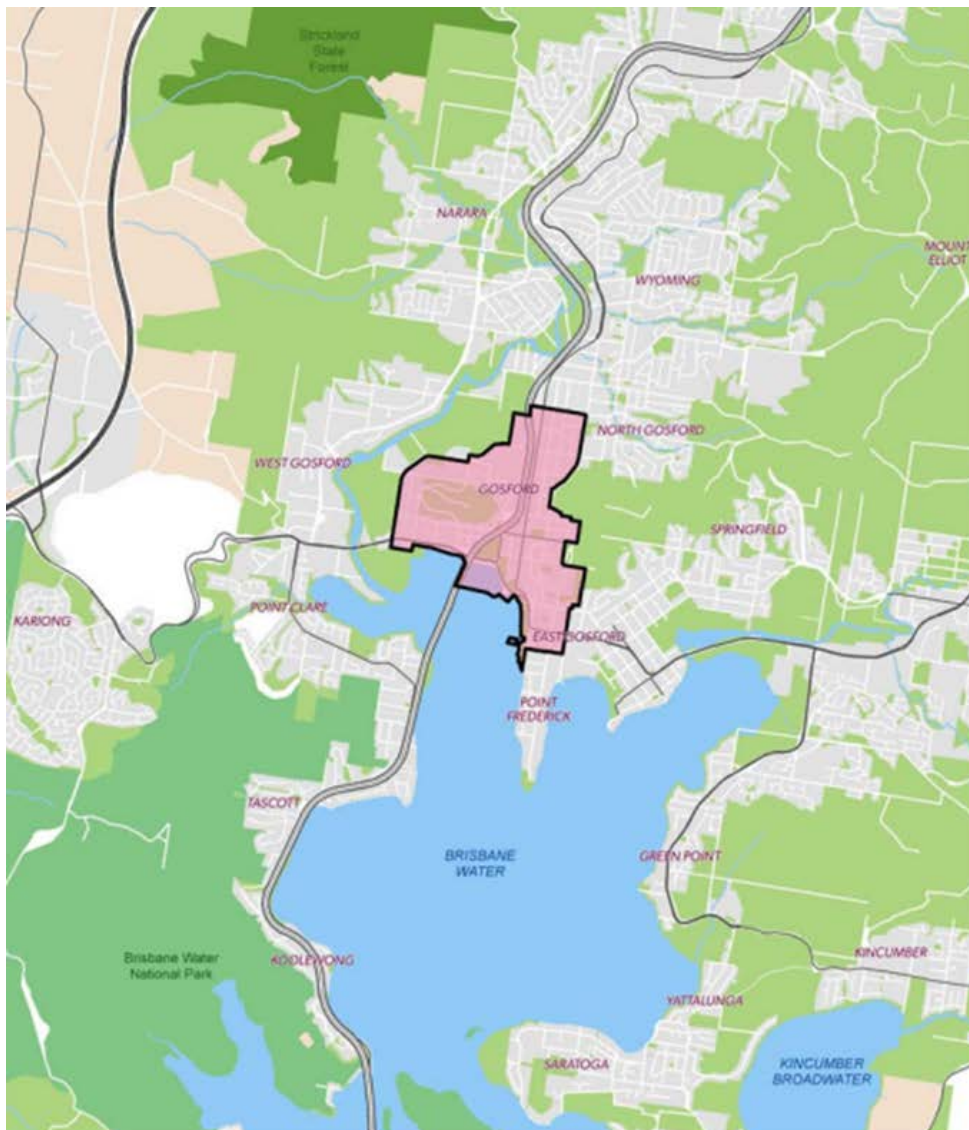


December 2019

Gosford City Centre SIC

Where does the SIC apply?

The Gosford City Centre SIC applies to all new development on residential and business zoned land within the Gosford City Centre. This applies to development that has a delivery cost of \$1 million or more.



Gosford Special Contribution Area
Gosford NSW

- Legend
- Gosford Special Contribution Area
 - National Parks
 - State Forest
 - Green Space
 - Urban Footprint
 - Waterways
 - Railway
 - Motorway
 - Highway

0 0.5 1 1.5
Kilometres
Map Projection: Transverse Mercator
Grid: GDA 1984 MGA Zone 56
Horizontal Datum: GDA 1984



What does the Gosford City Centre SIC help fund?

The Gosford City Centre SIC helps to fund key pieces of State infrastructure that will support development in Gosford City Centre. Infrastructure projects funded through the Gosford City Centre SIC could include:

- road network upgrades to improve traffic flow and pedestrian connections through the city centre.
- an upgrade to Kibble Park.
- the planning and delivery of health, education and emergency services facilities.

Who is required to pay the SIC?

The Gosford City Centre SIC should be paid by developers as part of the development application process. The Department of Planning, Industry and Environment implements the SIC and administers the payment of the SIC.

What is the SIC rate?

The Gosford City Centre SIC determination requires a levy of 2 per cent of the cost of development for all new development on residential and business zoned land. It is only applied to development that costs \$1 million or more.

© State of New South Wales through Department of Planning, Industry and Environment 2019. The information contained in this publication is based on knowledge and understanding the time of writing December 2019. However, because of advances in knowledge, users are reminded of the need to ensure that the information upon which they rely is up to date and to check the currency of the information with the appropriate officer of the Department of Planning, Industry and Environment or the user's independent adviser.