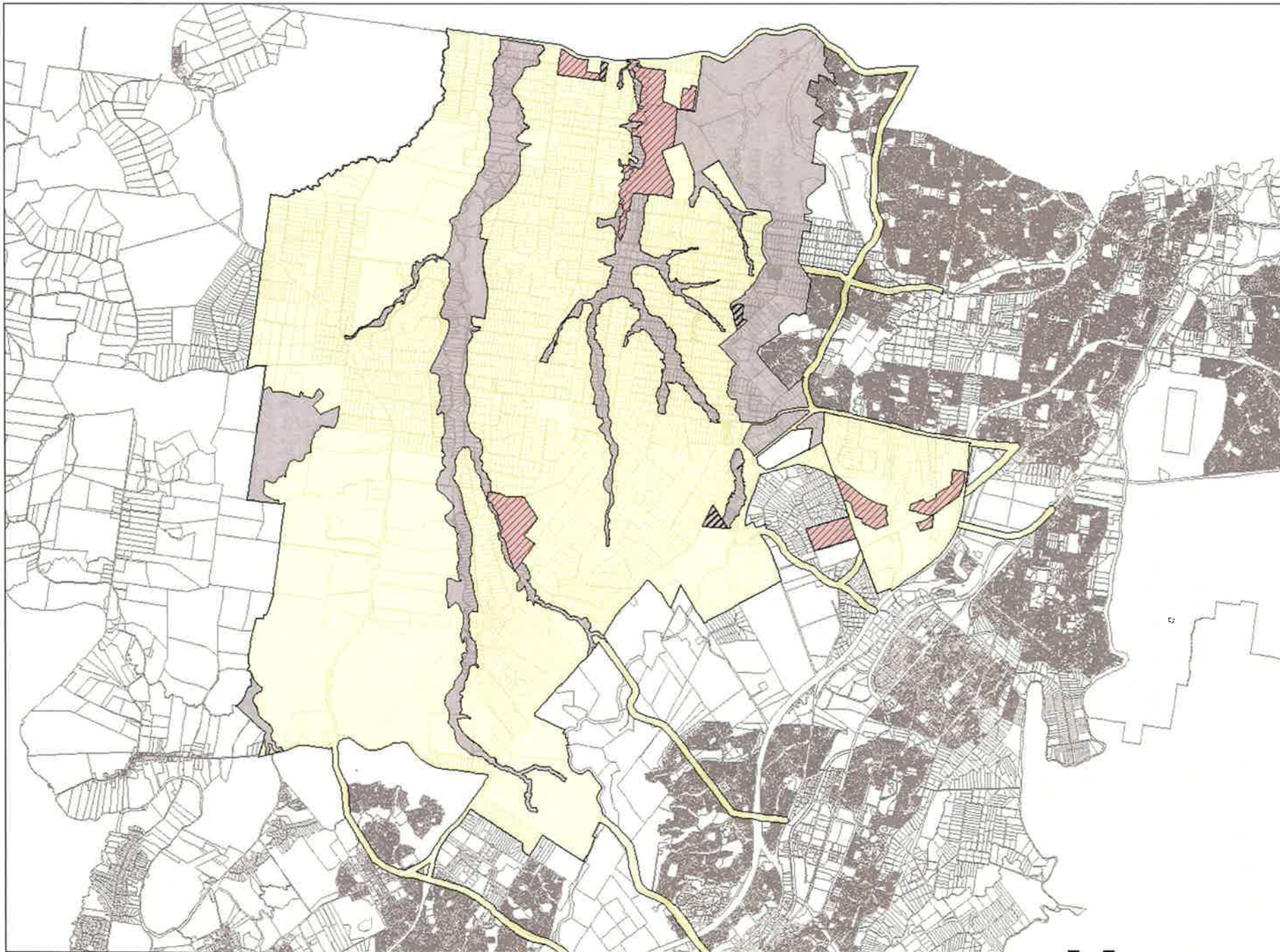


North West Growth Centre - Biodiversity Certification





Legend

- SW Growth Centre Boundary
- Certified Area
- Non Certified Area
- Non Certified Area
Land subject to Condition 12 of the Biodiversity Certification Order
- Non Certified Area
Subject to further investigation in accordance with Conditions 14, 17 and 18 of the Biodiversity Certification Order

This is the Map referred to in the Biodiversity Certification Order.

November 2007

Disclaimer
The information contained on this map is, to the best of the Government's knowledge correct. However, no warranty or guarantee is provided by the Government and no liability is accepted for any loss or damage resulting from any person relying upon or using the information contained in the map

South West Growth Centre - Biodiversity Certification



SCHEDULE 3 – CRITERIA REFERRED TO IN CONDITION 15

The following are the criteria referred to in condition 15 of Schedule 1.

Whether the areas:

- a. contain an endangered ecological community as listed under the Act;
- b. are contiguous with the existing native vegetation on the Air Services Australia site;
- c. are equal to or greater than 4 hectares;
- d. have 10% or greater canopy cover;
- e. have 30% or greater vegetation cover within,
 - i. a 0.55 kilometre radius (for local connectivity), and
 - ii. a 1.75 kilometre radius (for regional connectivity),as measured from the approximate centre point of each area;
- f. have a perimeter to area ratio that is conducive to on-going conservation management; and
- g. whether after applying a 50 metre disturbance buffer to the edge of each area (where that edge is likely to be made available for future urban development as identified in the SEPP), the overall size of the area then falls below 4 hectares.

SCHEDULE 4 – INDICATIVE TEN YEAR PAYMENT TIMETABLE

The following timetable is that referred to in condition 22 of Schedule 1.

Financial year	Amount in current dollars (\$ million)	Amount in 2005/06 dollars (\$ million)
2008/09	1.0	1.0
2009/10	3.0	3.0
2010/11	5.8	5.8
2011/12	8.8	8.8
2012/13	10.4	10.4
2013/14	12.1	12.1
2014/15	12.9	12.9
2015/16	14.1	14.1
2016/17	15.1	15.1
2017/18	15.8	15.8

Appendix B

Riparian, Channel and Environmental Inventory' (RCE) Scores

River descriptors, categories and values used in the modified riparian, channel and environmental inventory (RCE) from Chessman *et al.* (1997).

Descriptor and category	Score
1. Land use pattern beyond the immediate riparian zone	
Undisturbed native vegetation	4
Mixed native vegetation and pasture/exotics	3
Mainly pasture, crops or pine plantation	2
Urban	1
2. Width of riparian strip of woody vegetation	
More than 30 m	4
Between 5 and 30 m	3
Less than 5 m	2
No woody vegetation	1
3. Completeness of riparian strip of woody vegetation	
Riparian strip without breaks in vegetation	4
Breaks at intervals of more than 50 m	3
Breaks at intervals of 10 - 50 m	2
Breaks at intervals of less than 10 m	1
4. Vegetation of riparian zone within 10 m of channel	
Native tree and shrub species	4
Mixed native and exotic trees and shrubs	3
Exotic trees and shrubs	2
Exotic grasses / weeds only	1
5. Stream bank structure	
Banks fully stabilised by trees, shrubs etc	4
Banks firm but held mainly by grass and herbs	3
Banks loose, partly held by sparse grass etc	2
Banks unstable, mainly loose sand or soil	1

Descriptor and category	Score
6. Bank undercutting	
None, or restricted by tree roots	4
Only on curves and at constrictions	3
Frequent along all parts of stream	2
Severe, bank collapses common	1
7. Channel form	
Deep: width / depth ratio < 7:1	4
Medium: width / depth ratio 8:1 to 15:1	3
Shallow: width / depth ratio > 15:1	2
Artificial: concrete or excavated channel	1
8. Riffle / pool sequence	
Frequent alternation of riffles and pools	4
Long pools with infrequent short riffles	3
Natural channel without riffle / pool sequence	2
Artificial channel; no riffle / pool sequence	1
9. Retention devices in stream	
Many large boulders and/or debris dams	4
Rocks / logs present; limited damming effect	3
Rocks / logs present, but unstable, no damming	2
Stream with few or no rocks / logs	1
10. Channel sediment accumulations	
Little or no accumulation of loose sediments	4
Some gravel bars but little sand or silt	3
Bars of sand and silt common	2
Braiding by loose sediment	1
11. Stream bottom	

Descriptor and category	Score
Mainly clean stones with obvious interstices	4
Mainly stones with some cover of algae / silt	3
Bottom heavily silted but stable	2
Bottom mainly loose and mobile sediment	1
12. Stream detritus	
Mainly unsilted wood, bark, leaves	4
Some wood, leaves etc. with much fine detritus	3
Mainly fine detritus mixed with sediment	2
Little or no organic detritus	1
13. Aquatic vegetation	
Little or no macrophyte or algal growth	4
Substantial algal growth; few macrophytes	3
Substantial macrophyte growth; little algae	2
Substantial macrophyte and algal growth	1

Appendix C

Criteria for the fish habitat classifications

Classification	Characteristics of Waterway Type	Minimum Recommended Crossing Type
Class 1 – Major Fish Habitat	Major permanently or intermittently flowing waterway (e.g. river or major creek), habitat of a threatened fish species.	Bridge, arch structure or tunnel.
Class 2 – Moderate fish habitat	Named permanent or intermittent stream, creek or waterway with clearly defined bed and banks and with semi-permanent to permanent waters in pools or in connected wetland areas. Marine or freshwater aquatic vegetation is present. Known fish habitat and / or fish observed inhabiting the area.	Bridge, arch structure, culvert or ford.
Class 3 – Minimal fish habitat	Named or unnamed waterway with intermittent flow and potential refuge, breeding or feeding areas for some aquatic fauna (e.g. fish, yabbies). Semi-permanent pools form within the waterway or adjacent wetlands after a rain event. Otherwise, any minor waterway that interconnects with wetlands or recognised aquatic habitats.	Culvert or ford
Class 4 – Unlikely fish habitat	Named or unnamed watercourse with intermittent flow during rain events only, little or no defined drainage channel, little or no free standing water or pools after rain event (e.g. dry gullies or shallow floodplain depression with no permanent wetland aquatic flora present).	Culvert, causeway or ford

Appendix D

Fauna Species Lists

A search of the NSW Wildlife Atlas Database, the EPBC Protected Matters Database and the Birds Australia Atlas Database undertaken in August 2010, identified 466 fauna species occurring in Liverpool and Camden LGAs. These species included 28 amphibians, 312 birds, 4 Gastropods, 79 mammals, and 43 reptiles (**Table D1**). A threatened species fauna list for the Liverpool and Camden LGAs is presented in the **Table D2**.

Table D1 List of fauna species occurring in Liverpool and Camden LGAs.

Scientific Name	Common Name	Last Sited
Amphibia		
<i>Crinia parinsignifera</i>	Eastern Sign-bearing Froglet	25/10/1999
<i>Crinia signifera</i>	Common Eastern Froglet	7/09/2009
<i>Heleioporus australiacus</i>	Giant Burrowing Frog	4/04/2005
<i>Limnodynastes dumerilii</i>	Eastern Banjo Frog	25/03/1999
<i>Limnodynastes fletcheri</i>	Long-thumbed Frog	9/04/1983
<i>Limnodynastes ornatus</i>	Ornate Burrowing Frog	12/04/2005
<i>Limnodynastes peronii</i>	Brown-striped Frog	9/02/2009
<i>Limnodynastes tasmaniensis</i>	Spotted Grass Frog	5/09/2007
<i>Litoria aurea</i>	Green and Golden Bell Frog	22/03/1999
<i>Litoria caerulea</i>	Green Tree Frog	12/05/2005
<i>Litoria dentata</i>	Bleating Tree Frog	31/08/2007
<i>Litoria ewingii</i>	Brown Tree Frog	20/05/1996
<i>Litoria fallax</i>	Eastern Dwarf Tree Frog	15/10/2008
<i>Litoria freycineti</i>	Freycinet's Frog	13/11/1998
<i>Litoria latopalmata</i>	Broad-palmed Frog	15/11/2001
<i>Litoria lesueuri</i>	Lesueur's Frog	2/04/2005
<i>Litoria peronii</i>	Peron's Tree Frog	18/03/2008
<i>Litoria raniformis</i>	Growling Grass Frog, Southern Bell Frog, Green and Golden Frog, Warty Swamp Frog	Unknown
<i>Litoria tyleri</i>	Tyler's Tree Frog	21/01/2004
<i>Litoria verreauxii</i>	Verreaux's Frog	18/03/2008
<i>Litoria verreauxii verreauxii</i>	Verreaux's Tree Frog (subsp)	5/09/2007
<i>Litoria wilcoxii</i>		27/04/2007
<i>Mixophyes iteratus</i>	Southern Barred Frog, Giant Barred Frog	unknown
<i>Pseudophryne australis</i>	Red-crowned Toadlet	30/08/2005
<i>Pseudophryne bibronii</i>	Bibron's Toadlet	7/07/2006
<i>Rhinella marina</i>	Cane Toad	30/06/2006
<i>Uperoleia laevigata</i>	Smooth Toadlet	29/04/2008
<i>Uperoleia sp.</i>		5/09/2007
Aves		
<i>Acanthiza chrysorrhoa</i>	Yellow-rumped Thornbill	7/09/2009
<i>Acanthiza chrysorrhoa leighi</i>		12/11/1989
<i>Acanthiza lineata</i>	Striated Thornbill	6/07/2006

Scientific Name	Common Name	Last Sited
<i>Acanthiza nana</i>	Yellow Thornbill	7/09/2009
<i>Acanthiza pusilla</i>	Brown Thornbill	7/09/2009
<i>Acanthiza reguloides</i>	Buff-rumped Thornbill	27/06/2006
<i>Acanthiza sp.</i>	Unidentified Thornbill	10/02/2009
<i>Acanthorhynchus tenuirostris</i>	Eastern Spinebill	26/11/2008
<i>Accipiter cirrocephalus</i>	Collared Sparrowhawk	18/03/2008
<i>Accipiter fasciatus</i>	Brown Goshawk	31/08/2007
<i>Accipiter novaehollandiae</i>	Grey Goshawk	5/09/2007
<i>Acrocephalus australis</i>	Australian Reed-Warbler	26/11/2008
<i>Actitis hypoleucos</i>	Common Sandpiper	2/01/1988
<i>Aegotheles cristatus</i>	Australian Owlet-nightjar	18/05/2006
<i>Aerodramus terraereginae</i>	Australian Swiftlet	29/07/1984
<i>Alauda arvensis</i>	Eurasian Skylark	22/02/2006
<i>Alisterus scapularis</i>	Australian King-Parrot	29/04/2008
<i>Anas castanea</i>	Chestnut Teal	15/10/2008
<i>Anas gracilis</i>	Grey Teal	26/11/2008
<i>Anas platyrhynchos</i>	Mallard	26/11/2008
<i>Anas rhynchotis</i>	Australasian Shoveler	30/07/2007
<i>Anas superciliosa</i>	Pacific Black Duck	29/04/2008
<i>Anhinga novaehollandiae</i>	Australasian Darter	15/10/2008
<i>Anthochaera carunculata</i>	Red Wattlebird	7/09/2009
<i>Anthochaera chrysoptera</i>	Little Wattlebird	26/11/2008
<i>Anthochaera phrygia</i>	Regent Honeyeater	Unknown
<i>Anthus novaeseelandiae</i>	Australian Pipit	12/10/2009
<i>Apus pacificus</i>	Fork-tailed Swift	1/12/1987
<i>Aquila audax</i>	Wedge-tailed Eagle	1/06/2009
<i>Ardea ibis</i>	Cattle Egret	1/06/2009
<i>Ardea intermedia</i>	Intermediate Egret	29/08/2007
<i>Ardea alba (or Ardea modesta)</i>	Eastern Great Egret, White Egret	26/07/2007
<i>Ardea pacifica</i>	White-necked Heron	2/08/2002
<i>Ardenna bulleri</i>	Buller's Shearwater	19/01/1992
<i>Ardenna creatopus</i>	Pink-footed Shearwater	22/03/1986
<i>Ardenna grisea</i>	Sooty Shearwater	15/11/1990
<i>Ardenna pacificus</i>	Wedge-tailed Shearwater	24/02/1990
<i>Artamus cyanopterus</i>	Dusky Woodswallow	18/09/2007
<i>Artamus personatus</i>	Masked Woodswallow	20/10/2004
<i>Artamus superciliosus</i>	White-browed Woodswallow	15/11/1991
<i>Aviceda subcristata</i>	Pacific Baza	6/12/2007
<i>Aythya australis</i>	Hardhead	18/03/2008
<i>Barnardius zonarius</i>	Australian Ringneck	30/08/1988
<i>Biziura lobata</i>	Musk Duck	31/10/1991
<i>Burhinus grallarius</i>	Bush Stone-curlew	31/12/1950

Scientific Name	Common Name	Last Sited
<i>Butorides striatus</i>	Striated Heron	5/09/2007
<i>Cacatua galerita</i>	Sulphur-crested Cockatoo	1/06/2009
<i>Cacatua sanguinea</i>	Little Corella	7/09/2009
<i>Cacatua tenuirostris</i>	Long-billed Corella	15/10/2008
<i>Cacomantis flabelliformis</i>	Fan-tailed Cuckoo	7/09/2009
<i>Cacomantis pallidus</i>	Pallid Cuckoo	5/09/2007
<i>Cacomantis variolosus</i>	Brush Cuckoo	20/12/2001
<i>Callocephalon fimbriatum</i>	Gang-gang Cockatoo	27/04/2006
<i>Calonectris leucomelas</i>	Streaked Shearwater	29/04/1992
<i>Calyptorhynchus funereus</i>	Yellow-tailed Black-Cockatoo	26/11/2008
<i>Calyptorhynchus lathami</i>	Glossy Black-Cockatoo	12/04/2006
<i>Carduelis carduelis</i>	European Goldfinch	18/09/2007
<i>Catharacta skua</i>	Great Skua	29/08/1992
<i>Centropus phasianinus</i>	Pheasant Coucal	5/04/2005
<i>Ceyx azureus</i>	Azure Kingfisher	27/04/2007
<i>Chalcites basalis</i>	Horsfield's Bronze-Cuckoo	18/09/2007
<i>Chalcites lucidus</i>	Shining Bronze-Cuckoo	31/08/2007
<i>Chenonetta jubata</i>	Australian Wood Duck	7/09/2009
<i>Cheramoeca leucosterna</i>	White-backed Swallow	25/01/1983
<i>Chlidonias leucopterus</i>	White-winged Black Tern	28/11/1989
<i>Chloris chloris</i>	European Greenfinch	23/09/1981
<i>Chroicocephalus novaehollandiae</i>	Silver Gull	30/07/2007
<i>Cinclosoma punctatum</i>	Spotted Quail-thrush	16/06/2006
<i>Circus approximans</i>	Swamp Harrier	30/07/2007
<i>Circus assimilis</i>	Spotted Harrier	19/02/1991
<i>Cisticola exilis</i>	Golden-headed Cisticola	15/10/2008
<i>Colluricincla harmonica</i>	Grey Shrike-thrush	10/06/2008
<i>Columba livia</i>	Rock Dove	15/10/2008
<i>Coracina novaehollandiae</i>	Black-faced Cuckoo-shrike	7/09/2009
<i>Coracina novaehollandiae melanops</i>		1/08/1993
<i>Coracina papuensis</i>	White-bellied Cuckoo-shrike	30/07/2007
<i>Corcorax melanorhamphos</i>	White-winged Chough	18/03/2008
<i>Cormobates leucophaea</i>	White-throated Treecreeper	7/09/2009
<i>Corvus coronoides</i>	Australian Raven	12/10/2009
<i>Corvus mellori</i>	Little Raven	1/06/2009
<i>Coturnix pectoralis</i>	Stubble Quail	15/03/2001
<i>Coturnix ypsilophora</i>	Brown Quail	10/02/2009
<i>Cracticus nigrogularis</i>	Pied Butcherbird	26/11/2008
<i>Cracticus tibicen</i>	Australian Magpie	12/10/2009
<i>Cracticus tibicen tibicen</i>		3/11/2002
<i>Cracticus torquatus</i>	Grey Butcherbird	7/09/2009
<i>Cracticus torquatus torquatus</i>		1/08/1993

Scientific Name	Common Name	Last Sited
<i>Cygnus atratus</i>	Black Swan	9/02/2009
<i>Dacelo novaeguineae</i>	Laughing Kookaburra	7/09/2009
<i>Daphoenositta chrysoptera</i>	Varied Sittella	7/09/2009
<i>Daption capense</i>	Cape Petrel	24/06/1990
<i>Dicaeum hirundinaceum</i>	Mistletoebird	5/09/2007
<i>Dicrurus bracteatus</i>	Spangled Drongo	30/07/2007
<i>Diomedea epomophora</i>	Royal Albatross	25/10/1986
<i>Diomedea exulans</i>	Wandering Albatross	29/11/1992
<i>Egretta garzetta</i>	Little Egret	25/05/2006
<i>Egretta novaehollandiae</i>	White-faced Heron	1/06/2009
<i>Elanus axillaris</i>	Black-shouldered Kite	6/12/2007
<i>Elseyornis melanops</i>	Black-fronted Dotterel	30/07/2007
<i>Eolophus roseicapillus</i>	Galah	7/09/2009
<i>Eolophus roseicapillus albiceps</i>		19/03/1994
<i>Eopsaltria australis</i>	Eastern Yellow Robin	7/09/2009
<i>Eopsaltria australis australis</i>		1/08/1993
<i>Epthianura albifrons</i>	White-fronted Chat	18/11/1996
<i>Eudynamys orientalis</i>	Eastern Koel	15/10/2008
<i>Eurystomus orientalis</i>	Dollarbird	6/12/2007
<i>Falco berigora</i>	Brown Falcon	7/09/2009
<i>Falco cenchroides</i>	Nankeen Kestrel	12/10/2009
<i>Falco longipennis</i>	Australian Hobby	18/03/2008
<i>Falco peregrinus</i>	Peregrine Falcon	18/03/2008
<i>Falco subniger</i>	Black Falcon	13/03/2000
<i>Falcunculus frontatus frontatus</i>	Eastern Shrike-tit	27/06/2006
<i>Fregetta grallaria</i>	White-bellied Storm-Petrel	28/05/1989
<i>Fregetta tropica</i>	Black-bellied Storm-Petrel	26/11/1989
<i>Fulica atra</i>	Eurasian Coot	18/03/2008
<i>Fulmarus glacialoides</i>	Southern Fulmar	22/08/1987
<i>Gallinago hardwickii</i>	Latham's Snipe	31/10/1991
<i>Gallinula tenebrosa</i>	Dusky Moorhen	10/06/2008
<i>Gallirallus philippensis</i>	Buff-banded Rail	30/07/2007
<i>Garrodia nereis</i>	Grey-backed Storm-Petrel	27/07/1985
<i>Gelochelidon nilotica</i>	Gull-billed Tern	27/11/1988
<i>Geopelia cuneata</i>	Diamond Dove	24/10/1992
<i>Geopelia humeralis</i>	Bar-shouldered Dove	10/06/2006
<i>Geopelia striata</i>	Peaceful Dove	12/06/2006
<i>Gerygone albogularis</i>	White-throated Gerygone	31/08/2007
<i>Gerygone fusca</i>	Western Gerygone	2/01/1982
<i>Gerygone mouki</i>	Brown Gerygone	15/10/2008
<i>Gliciphila melanops</i>	Tawny-crowned Honeyeater	16/06/2006
<i>Glossopsitta concinna</i>	Musk Lorikeet	1/08/2007

Scientific Name	Common Name	Last Sited
<i>Glossopsitta pusilla</i>	Little Lorikeet	1/08/2007
<i>Grallina cyanoleuca</i>	Magpie-lark	7/09/2009
<i>Gygis alba</i>	White Tern	4/06/1989
<i>Haliaeetus leucogaster</i>	White-bellied Sea-Eagle	15/10/2008
<i>Haliastur sphenurus</i>	Whistling Kite	25/05/2006
<i>Hieraaetus morphnoides</i>	Little Eagle	31/08/2007
<i>Himantopus himantopus</i>	Black-winged Stilt	30/07/2007
<i>Hirundapus caudacutus</i>	White-throated Needletail	20/03/2005
<i>Hirundo neoxena</i>	Welcome Swallow	12/10/2009
<i>Hydroprogne caspia</i>	Caspian Tern	30/07/2007
<i>Hylacola pyrrhopygia</i>	Chestnut-rumped Heathwren	28/02/1995
<i>Ixobrychus dubius</i>	Australian Little Bittern	26/02/1989
<i>Lalage sueurii</i>	White-winged Triller	7/09/2009
<i>Larus pacificus</i>	Pacific Gull	30/06/1988
<i>Lathamus discolor</i>	Swift Parrot	12/06/2006
<i>Leucosarcia picata</i>	Wonga Pigeon	10/06/2006
<i>Lichenostomus chrysops</i>	Yellow-faced Honeyeater	5/09/2007
<i>Lichenostomus fuscus</i>	Fuscous Honeyeater	31/08/2007
<i>Lichenostomus leucotis</i>	White-eared Honeyeater	7/07/2006
<i>Lichenostomus melanops</i>	Yellow-tufted Honeyeater	27/04/2007
<i>Lichenostomus penicillatus</i>	White-plumed Honeyeater	15/10/2008
<i>Lonchura castaneothorax</i>	Chestnut-breasted Mannikin	8/05/1993
<i>Lonchura punctulata</i>	Nutmeg Mannikin	10/06/2006
<i>Lophoictinia isura</i>	Square-tailed Kite	16/06/2006
<i>Lopholaimus antarcticus</i>	Topknot Pigeon	15/03/2000
<i>Macronectes giganteus</i>	Southern Giant Petrel	26/07/1992
<i>Macronectes halli</i>	Northern Giant-Petrel	21/09/1985
<i>Macropygia amboinensis</i>	Brown Cuckoo-Dove	27/04/2007
<i>Malacorhynchus membranaceus</i>	Pink-eared Duck	26/07/2007
<i>Malurus cyaneus</i>	Superb Fairy-wren	7/09/2009
<i>Malurus lamberti</i>	Variegated Fairy-wren	7/07/2006
<i>Manorina melanocephala</i>	Noisy Miner	12/10/2009
<i>Manorina melanophrys</i>	Bell Miner	7/09/2009
<i>Megalurus gramineus</i>	Little Grassbird	30/07/2007
<i>Megalurus timoriensis</i>	Tawny Grassbird	26/11/2008
<i>Melanodryas cucullata</i>	Hooded Robin	6/01/1998
<i>Meliphaga lewinii</i>	Lewin's Honeyeater	17/07/2008
<i>Melithreptus brevirostris</i>	Brown-headed Honeyeater	31/08/2007
<i>Melithreptus gularis gularis</i>	Black-chinned Honeyeater (eastern subspecies)	30/07/2007
<i>Melithreptus lunatus</i>	White-naped Honeyeater	30/07/2007
<i>Menura novaehollandiae</i>	Superb Lyrebird	5/09/2007

Scientific Name	Common Name	Last Sited
<i>Merops ornatus</i>	Rainbow Bee-eater	24/02/2006
<i>Microcarbo melanoleucos</i>	Little Pied Cormorant	31/08/2007
<i>Microeca fascinans</i>	Jacky Winter	7/09/2009
<i>Milvus migrans</i>	Black Kite	7/08/1983
<i>Monarcha melanopsis</i>	Black-faced Monarch	27/02/2006
<i>Morus serrator</i>	Australasian Gannet	18/06/1967
<i>Myiagra cyanoleuca</i>	Satin Flycatcher	15/10/2008
<i>Myiagra inquieta</i>	Restless Flycatcher	7/09/2009
<i>Myiagra rubecula</i>	Leaden Flycatcher	16/04/2006
<i>Myiagra sp.</i>	unidentified Flycatcher	15/11/2001
<i>Myzomela sanguinolenta</i>	Scarlet Honeyeater	23/03/2009
<i>Neochmia modesta</i>	Plum-headed Finch	14/05/1996
<i>Neochmia temporalis</i>	Red-browed Finch	26/11/2008
<i>Ninox connivens</i>	Barking Owl	31/12/1903
<i>Ninox novaeseelandiae</i>	Southern Boobook	31/08/2007
<i>Ninox strenua</i>	Powerful Owl	30/07/2007
<i>Numenius phaeopus</i>	Whimbrel	26/11/2008
<i>Nycticorax caledonicus</i>	Nankeen Night Heron	30/07/2007
<i>Nymphicus hollandicus</i>	Cockatiel	10/06/2006
<i>Oceanites oceanicus</i>	Wilson's Storm-Petrel	29/11/1992
<i>Ocyphaps lophotes</i>	Crested Pigeon	12/10/2009
<i>Origma solitaria</i>	Rockwarbler	3/02/1999
<i>Oriolus sagittatus</i>	Olive-backed Oriole	7/09/2009
<i>Oxyura australis</i>	Blue-billed Duck	7/04/1980
<i>Pachycephala pectoralis</i>	Golden Whistler	26/11/2008
<i>Pachycephala rufiventris</i>	Rufous Whistler	7/09/2009
<i>Pachyptila belcheri</i>	Slender-billed Prion	1/08/1992
<i>Pachyptila desolata</i>	Antarctic Prion	24/06/1990
<i>Pachyptila turtur</i>	Fairy Prion	29/08/1992
<i>Pardalotus punctatus</i>	Spotted Pardalote	7/09/2009
<i>Pardalotus striatus</i>	Striated Pardalote	18/03/2008
<i>Passer domesticus</i>	House Sparrow	26/11/2008
<i>Pelagodroma marina</i>	White-faced Storm-Petrel	29/11/1992
<i>Pelecanus conspicillatus</i>	Australian Pelican	22/07/2009
<i>Petrochelidon ariel</i>	Fairy Martin	15/10/2008
<i>Petrochelidon nigricans</i>	Tree Martin	20/10/2004
<i>Petroica boodang</i>	Scarlet Robin	16/06/2006
<i>Petroica goodenovii</i>	Red-capped Robin	25/09/1982
<i>Petroica phoenicea</i>	Flame Robin	13/01/2004
<i>Petroica rosea</i>	Rose Robin	31/08/2007
<i>Phaethon lepturus</i>	White-tailed Tropicbird	12/03/1989
<i>Phaethon rubricauda</i>	Red-tailed Tropicbird	24/02/1991

Scientific Name	Common Name	Last Sited
<i>Phalacrocorax carbo</i>	Great Cormorant	5/09/2007
<i>Phalacrocorax sulcirostris</i>	Little Black Cormorant	17/07/2008
<i>Phalacrocorax varius</i>	Pied Cormorant	15/10/2008
<i>Phaps chalcoptera</i>	Common Bronzewing	27/06/2006
<i>Phaps elegans</i>	Brush Bronzewing	8/09/1983
<i>Philemon citreogularis</i>	Little Friarbird	14/01/2005
<i>Philemon corniculatus</i>	Noisy Friarbird	31/08/2007
<i>Phoebastria fusca</i>	Sooty Albatross	25/05/1985
<i>Phoebastria palpebrata</i>	Light-mantled Sooty Albatross	27/10/1985
<i>Phylidonyris niger</i>	White-cheeked Honeyeater	15/10/2008
<i>Phylidonyris novaehollandiae</i>	New Holland Honeyeater	26/11/2008
<i>Platalea flavipes</i>	Yellow-billed Spoonbill	27/06/2006
<i>Platalea regia</i>	Royal Spoonbill	18/03/2008
<i>Platycercus elegans</i>	Crimson Rosella	26/11/2008
<i>Platycercus eximius</i>	Eastern Rosella	12/10/2009
<i>Podargus strigoides</i>	Tawny Frogmouth	6/12/2007
<i>Podiceps cristatus</i>	Great Crested Grebe	2/10/1997
<i>Poliiocephalus poliocephalus</i>	Hoary-headed Grebe	27/04/2006
<i>Porphyrio porphyrio</i>	Purple Swamphen	7/09/2009
<i>Porzana pusilla</i>	Baillon's Crane	2/10/1997
<i>Porzana tabuensis</i>	Spotless Crane	30/07/2007
<i>Procellaria aequinoctialis</i>	White-chinned Petrel	29/11/1992
<i>Procellaria parkinsoni</i>	Black Petrel	19/11/1992
<i>Procelsterna cerulea</i>	Grey Ternlet	24/02/1990
<i>Psephotus haematonotus</i>	Red-rumped Parrot	7/05/2010
<i>Pseudobulweria rostrata</i>	Tahiti Petrel	20/11/1991
<i>Psophodes olivaceus</i>	Eastern Whipbird	1/06/2009
<i>Pterodroma arminjoniana</i>	Herald Petrel	17/04/1988
<i>Pterodroma cervicalis</i>	White-necked Petrel	16/02/1992
<i>Pterodroma cookii</i>	Cook's Petrel	27/10/1985
<i>Pterodroma externa</i>	Juan Fernandez Petrel	10/08/1981
<i>Pterodroma inexpectata</i>	Mottled Petrel	19/01/1992
<i>Pterodroma lessonii</i>	White-headed Petrel	26/07/1992
<i>Pterodroma leucoptera leucoptera</i>	Gould's Petrel	19/01/1992
<i>Pterodroma macroptera</i>	Great-winged Petrel	29/11/1992
<i>Pterodroma mollis</i>	Soft-plumaged Petrel	23/10/1988
<i>Pterodroma neglecta neglecta</i>	Kermadec Petrel (west Pacific subspecies)	24/02/1990
<i>Pterodroma nigripennis</i>	Black-winged Petrel	26/11/1989
<i>Pterodroma solandri</i>	Providence Petrel	29/11/1992
<i>Ptilonorhynchus violaceus</i>	Satin Bowerbird	15/10/2008
<i>Puffinus assimilis</i>	Little Shearwater	28/05/1989

Scientific Name	Common Name	Last Sited
<i>Puffinus carneipes</i>	Flesh-footed Shearwater	27/11/1988
<i>Puffinus gavia</i>	Fluttering Shearwater	29/08/1992
<i>Puffinus huttoni</i>	Hutton's Shearwater	15/11/1990
<i>Puffinus lherminieri</i>	Audubon's Shearwater	28/02/1987
<i>Purnella albifrons</i>	White-fronted Honeyeater	18/09/1985
<i>Pycnonotus jocosus</i>	Red-whiskered Bulbul	7/09/2009
<i>Pyrrholaemus saggitatus</i>	Speckled Warbler	27/06/2006
<i>Recurvirostra novaehollandiae</i>	Red-necked Avocet	30/07/2007
<i>Rhipidura albiscapa</i>	Grey Fantail	7/09/2009
<i>Rhipidura leucophrys</i>	Willie Wagtail	7/09/2009
<i>Rhipidura rufifrons</i>	Rufous Fantail	27/02/2006
<i>Rostratula benghalensis australis</i> (or <i>Rostratula australis</i>)	Australian Painted Snipe	unknown
<i>Scythrops novaehollandiae</i>	Channel-billed Cuckoo	16/03/2005
<i>Sericornis citreogularis</i>	Yellow-throated Scrubwren	3/02/1994
<i>Sericornis frontalis</i>	White-browed Scrubwren	26/11/2008
<i>Sericornis magnirostra</i>	Large-billed Scrubwren	28/02/1995
<i>Smicromis brevirostris</i>	Weebill	31/08/2007
<i>Sphecotheres vieilloti</i>	Australasian Figbird	11/11/1984
<i>Stagonopleura bella</i>	Beautiful Firetail	20/01/1994
<i>Stagonopleura guttata</i>	Diamond Firetail	2/06/1990
<i>Stercorarius longicaudus</i>	Long-tailed Jaeger	29/11/1992
<i>Stercorarius maccormicki</i>	South Polar Skua	20/06/1990
<i>Stercorarius pomarinus</i>	Pomarine Jaeger	15/11/1990
<i>Sterna fuscata</i>	Sooty Tern	24/11/1991
<i>Sterna paradisaea</i>	Arctic Tern	24/09/1989
<i>Sterna striata</i>	White-fronted Tern	29/08/1987
<i>Stictonetta naevosa</i>	Freckled Duck	19/02/2003
<i>Stipiturus malachurus</i>	Southern Emu-wren	15/11/2001
<i>Strepera graculina</i>	Pied Currawong	1/06/2009
<i>Strepera versicolor</i>	Grey Currawong	30/04/1996
<i>Streptopelia chinensis</i>	Spotted Turtle-Dove	7/09/2009
<i>Sturnus tristis</i>	Common Myna	7/09/2009
<i>Sturnus vulgaris</i>	Common Starling	7/09/2009
<i>Sula leucogaster</i>	Brown Booby	15/11/1990
<i>Tachybaptus novaehollandiae</i>	Australasian Grebe	18/03/2008
<i>Taeniopygia bichenovii</i>	Double-barred Finch	26/11/2008
<i>Taeniopygia guttata</i>	Zebra Finch	20/02/2006
<i>Thalassarche bulleri</i>	Buller's Albatross	14/11/1991
<i>Thalassarche cauta</i>	Shy Albatross	29/11/1992
<i>Thalassarche chlororhynchos</i>	Yellow-nosed Albatross	3/07/1988
<i>Thalassarche chrysostoma</i>	Grey-headed Albatross	26/05/1985

Scientific Name	Common Name	Last Sited
<i>Thalassarche melanophris</i>	Black-browed Albatross	29/11/1992
<i>Threskiornis molucca</i>	Australian White Ibis	26/11/2008
<i>Threskiornis spinicollis</i>	Straw-necked Ibis	18/03/2008
<i>Todiramphus pyrrhopygius</i>	Red-backed Kingfisher	20/11/1991
<i>Todiramphus sanctus</i>	Sacred Kingfisher	31/08/2007
<i>Trichoglossus chlorolepidotus</i>	Scaly-breasted Lorikeet	7/09/2009
<i>Trichoglossus haematodus</i>	Rainbow Lorikeet	7/09/2009
<i>Tringa nebularia</i>	Common Greenshank	26/04/2006
<i>Turdus merula</i>	Eurasian Blackbird	15/10/2008
<i>Turnix varius</i>	Painted Button-quail	12/06/2006
<i>Tyto javanica</i>	Eastern Barn Owl	15/06/2006
<i>Tyto novaehollandiae</i>	Masked Owl	Unknown
<i>Vanellus miles</i>	Masked Lapwing	7/09/2009
<i>Vanellus miles novaehollandiae</i>	[Spur-winged Plover]	1/08/1993
<i>Vanellus tricolor</i>	Banded Lapwing	3/07/2000
<i>Xanthomyza phrygia</i>	Regent Honeyeater	15/01/1991
<i>Zoothera sp.</i>	unidentified ground thrush	25/05/1996
<i>Zosterops lateralis</i>	Silvereye	7/09/2009
Gastropoda		
<i>Bradybaena similaris</i>	Asian trampsnail	15/12/2001
<i>Helix aspersa</i>	Brown gardensnail	18/03/2008
<i>Limax maximus</i>	Giant Garden Slug	10/07/2003
<i>Meridolum corneovirens</i>	Cumberland Plain Land Snail	31/12/1889
Mammalia		
<i>Antechinus sp.</i>	Unidentified Antechinus	4/04/2005
<i>Antechinus stuartii</i>	Brown Antechinus	20/04/2006
<i>Arctocephalus forsteri</i>	New Zealand Fur-seal	22/08/1997
<i>Bettongia penicillata penicillata</i>	Brush-tailed Bettong (South-East Mainland)	12/12/1857
<i>Bos taurus</i>	European cattle	12/10/2009
<i>Canis lupus</i>	Dingo, domestic dog	30/06/2006
<i>Canis lupus familiaris</i>	Dog	17/01/2008
<i>Capra hircus</i>	Goat	27/06/2006
<i>Cercartetus nanus</i>	Eastern Pygmy-possum	27/11/1993
<i>Cervus elaphus</i>	Red Deer	10/06/2006
<i>Cervus sp.</i>	Unidentified Deer	30/06/2006
<i>Cervus timorensis</i>	Rusa Deer	5/09/2007
<i>Chalinolobus dwyeri</i>	Large-eared Pied Bat	15/12/2001
<i>Chalinolobus gouldii</i>	Gould's Wattled Bat	7/09/2009
<i>Chalinolobus morio</i>	Chocolate Wattled Bat	7/09/2009
<i>Dama dama</i>	Fallow Deer	8/04/2005
<i>Dasyuridae sp.</i>	unidentified dasyurid	29/03/2005

Scientific Name	Common Name	Last Sited
<i>Dasyurus maculatus</i>	Spotted-tailed Quoll	31/12/2004
<i>Dolphin sp.</i>	Unidentified Dolphin	26/09/1998
<i>Equus caballus</i>	Horse	19/09/2006
<i>Falsistrellus tasmaniensis</i>	Eastern False Pipistrelle	7/08/2007
<i>Felis catus</i>	Cat	26/11/2008
<i>Hydromys chrysogaster</i>	Water-rat	8/07/1998
<i>Lepus capensis</i>	Brown Hare	12/10/2009
<i>Macropod sp.</i>	unidentified macropod	17/04/2006
<i>Macropus giganteus</i>	Eastern Grey Kangaroo	31/08/2007
<i>Macropus robustus</i>	Common Wallaroo	27/06/2006
<i>Macropus rufogriseus</i>	Red-necked Wallaby	30/04/1996
<i>Macropus sp.</i>	kangaroo / wallaby	5/09/2007
<i>Megaptera novaeangliae</i>	Humpback Whale	26/09/1998
<i>Miniopterus schreibersii oceanensis</i>	Eastern Bentwing-bat	18/03/2008
<i>Mormopterus "Species 2"</i>	Undescribed Freetail Bat	18/03/2008
<i>Mormopterus norfolkensis</i>	Eastern Freetail-bat	7/09/2009
<i>Mormopterus norfolkensis/sp 1</i>	Unidentified Mastiff-bat	14/10/1997
<i>Mormopterus sp.</i>	mastiff-bat	7/08/2007
<i>Mus musculus</i>	House Mouse	5/09/2007
<i>Myotis macropus</i>	Southern Myotis	18/03/2008
<i>Nyctophilus geoffroyi</i>	Lesser Long-eared Bat	6/12/2007
<i>Nyctophilus gouldi</i>	Gould's Long-eared Bat	26/04/2006
<i>Nyctophilus sp.</i>	long-eared bat	7/09/2009
<i>Ornithorhynchus anatinus</i>	Platypus	30/06/2006
<i>Oryctolagus cuniculus</i>	Rabbit	7/09/2009
<i>Ovis aries</i>	Sheep (feral)	18/03/2008
<i>Perameles nasuta</i>	Long-nosed Bandicoot	15/11/2001
<i>Petauroides volans</i>	Greater Glider	12/04/2006
<i>Petaurus breviceps</i>	Sugar Glider	26/11/2008
<i>Petaurus norfolcensis</i>	Squirrel Glider	26/04/2006
<i>Petaurus sp.</i>	glider	4/07/2003
<i>Petrogale penicillata</i>	Brush-tailed Rock-wallaby	30/11/1996
<i>Potorous tridactylus tridactylus</i>	Long-nosed Potoroo	Unknown
<i>Phascolarctos cinereus</i>	Koala	29/11/2009
<i>Pseudocheirus peregrinus</i>	Common Ringtail Possum	26/11/2008
<i>Pteropus poliocephalus</i>	Grey-headed Flying-fox	17/06/2009
<i>Pteropus scapulatus</i>	Little Red Flying-fox	6/12/2007
<i>Rattus fuscipes</i>	Bush Rat	17/03/2005
<i>Pseudomys novaehollandiae</i>	New Holland Mouse	Unknown
<i>Rattus lutreolus</i>	Swamp Rat	28/06/1991
<i>Rattus norvegicus</i>	Brown Rat	15/12/2001
<i>Rattus rattus</i>	Black Rat	18/03/2008

Scientific Name	Common Name	Last Sited
<i>Rattus sp.</i>	rat	27/04/2006
<i>Rhinolophus megaphyllus</i>	Eastern Horseshoe-bat	23/02/1994
<i>Saccolaimus flaviventris</i>	Yellow-bellied Sheathtail-bat	6/06/2003
<i>Scoteanax rueppellii</i>	Greater Broad-nosed Bat	18/03/2008
<i>Scotorepens orion</i>	Eastern Broad-nosed Bat	10/02/2009
<i>Sminthopsis murina</i>	Common Dunnart	15/11/2001
<i>Sus scrofa</i>	Pig	9/02/2009
<i>Tachyglossus aculeatus</i>	Short-beaked Echidna	18/03/2008
<i>Tadarida australis</i>	White-striped Freetail-bat	7/09/2009
<i>Trichosurus caninus</i>	Short-eared Possum	23/02/1994
<i>Trichosurus sp.</i>	brushtail possum	30/06/2006
<i>Trichosurus vulpecula</i>	Common Brushtail Possum	9/02/2009
<i>Vespadelus darlingtoni</i>	Large Forest Bat	18/03/2008
<i>Vespadelus pumilus</i>	Eastern Forest Bat	21/11/2005
<i>Vespadelus regulus</i>	Southern Forest Bat	21/11/2005
<i>Vespadelus sp.</i>	Unidentified Eptesicus	22/11/2005
<i>Vespadelus vulturnus</i>	Little Forest Bat	7/09/2009
<i>Vombatus ursinus</i>	Common Wombat	29/04/2008
<i>Vulpes vulpes</i>	Fox	9/02/2009
<i>Wallabia bicolor</i>	Swamp Wallaby	29/04/2008
Reptilia		
<i>Acritoscincus platynota</i>	Red-throated Skink	15/03/2000
<i>Amphibolurus muricatus</i>	Jacky Lizard	31/08/2007
<i>Cacophis squamulosus</i>	Golden-crowned Snake	7/07/2006
<i>Chelodina longicollis</i>	Eastern Snake-necked Turtle	15/10/2008
<i>Cheloniidae sp.</i>	unidentified sea turtle	1/12/2002
<i>Cryptoblepharus virgatus</i>	Cream-striped Shinning-skink	18/09/2007
<i>Ctenotus robustus</i>	Robust Ctenotus	5/09/2007
<i>Ctenotus taeniolatus</i>	Copper-tailed Skink	15/08/2006
<i>Demansia psammophis</i>	Yellow-faced Whip Snake	10/05/2006
<i>Dendrelaphis punctulatus</i>	Common Tree Snake	29/04/2008
<i>Diplodactylus vittatus</i>	Wood Gecko	16/06/2006
<i>Egernia cunninghami</i>	Cunningham's Skink	8/04/2005
<i>Emydura macquarii</i>	Murray Turtle	27/08/2007
<i>Eulamprus heatwolei</i>	Yellow-bellied Water-skink	9/01/2000
<i>Eulamprus quoyii</i>	Eastern Water-skink	15/10/2008
<i>Eulamprus tenuis</i>	Barred-sided Skink	30/07/2007
<i>Furina diadema</i>	Red-naped Snake	30/08/2005
<i>Hemiaspis signata</i>	Black-bellied Swamp Snake	19/01/1999
<i>Hoplocephalus bungaroides</i>	Broad-headed Snake	Unknown
<i>Hydrophis elegans</i>	Elegant Seasnake	28/02/1982
<i>Lampropholis delicata</i>	Dark-flecked Garden Sunskink	12/10/2009

Scientific Name	Common Name	Last Sited
<i>Lampropholis guichenoti</i>	Pale-flecked Garden Sunskink	1/06/2009
<i>Lampropholis sp.</i>	Unidentified grass skink	18/12/2008
<i>Lygisaurus foliorum</i>	Tree-base Litter-skink	30/08/2007
<i>Morelia spilota</i>	Carpet & Diamond Pythons	19/03/2005
<i>Notechis scutatus</i>	Tiger Snake	30/08/2007
<i>Oedura lesueurii</i>	Lesueur's Velvet Gecko	27/09/2004
<i>Phyllurus platurus</i>	Broad-tailed Gecko	30/03/2005
<i>Physignathus lesueurii</i>	Eastern Water Dragon	7/08/2007
<i>Pogona barbata</i>	Bearded Dragon	18/03/2008
<i>Pseudechis porphyriacus</i>	Red-bellied Black Snake	15/10/2008
<i>Pseudonaja textilis</i>	Eastern Brown Snake	21/10/2009
<i>Pygopus lepidopodus</i>	Common Scaly-foot	19/03/2005
<i>Ramphotyphlops nigrescens</i>	Blackish Blind Snake	10/02/2009
<i>Rankinia diemensis</i>	Mountain Dragon	6/04/2005
<i>Saiphos equalis</i>	Three-toed Skink	30/07/2007
<i>Saproscincus mustelinus</i>	Weasel Skink	26/04/2006
<i>Tiliqua nigrolutea</i>	Blotched Blue-tongue	17/09/1975
<i>Tiliqua scincoides</i>	Eastern Blue-tongue	1/06/2009
<i>Underwoodisaurus milii</i>	Thick-tailed Gecko	31/12/1992
<i>Varanus sp.</i>	Unidentified Goanna	15/11/2001
<i>Varanus varius</i>	Lace Monitor	1/04/2005
<i>Vermicella annulata</i>	Bandy-bandy	7/02/1999

Table D2 List of threatened fauna species occurring in Liverpool and Camden LGAs.

Species Name	Common Name	EPBC Act 2000	TSC Act 1995 Classification
Amphibia			
<i>Litoria aurea</i>	Green and Golden Bell Frog	Vulnerable	Endangered
<i>Heleioporus australiacus</i>	Giant Burrowing Frog	Vulnerable	Vulnerable
<i>Litoria raniformis</i>	Growling Grass Frog, Southern Bell Frog, Green and Golden Frog, Warty Swamp Frog	Vulnerable	Endangered
<i>Mixophyes iterates</i>	Southern Barred Frog, Giant Barred Frog	Endangered	Endangered
<i>Pseudophryne australis</i>	Red-crowned Toadlet	-	Vulnerable
Aves			
<i>Oxyura australis</i>	Blue-billed Duck	-	Vulnerable
<i>Stictonetta naevosa</i>	Freckled Duck	-	Vulnerable

<i>Anthochaera phrygia</i>	Regent Honeyeater	Endangered	Endangered
<i>Rostratula australis</i>	Australian Painted Snipe	Vulnerable	Endangered
<i>Pyrrholaemus saggitatus</i>	Speckled Warbler	-	Vulnerable
<i>Circus assimilis</i>	Spotted Harrier	-	Vulnerable
<i>Stagonopleura guttata</i>	Diamond Firetail	-	Vulnerable
<i>Haliaeetus leucogaster</i>	White-bellied Sea-Eagle	Marine, Migratory	-
<i>Hirundapus caudacutus</i>	White-throated Needletail	Marine, Migratory	-
<i>Hieraaetus morphnoides</i>	Little Eagle	-	Vulnerable
<i>Lophoictinia isura</i>	Square-tailed Kite	-	Vulnerable
<i>Burhinus grallarius</i>	Bush Stone-curlew	-	Endangered
<i>Callocephalon fimbriatum</i>	Gang-gang Cockatoo	-	Vulnerable
<i>Calyptorhynchus lathami</i>	Glossy Black-Cockatoo	Endangered (SA)	Vulnerable
<i>Merops ornatus</i>	Rainbow Bee-eater	Marine, Migratory	-
<i>Monarcha melanopsis</i>	Black-faced Monarch	Marine, Migratory	-
<i>Myiagra cyanoleuca</i>	Satin Flycatcher	Marine, Migratory	-
<i>Rhipidura rufifrons</i>	Rufous Fantail	Marine, Migratory	-
<i>Epthianura albifrons</i>	White-fronted Chat	-	Vulnerable
<i>Melithreptus gularis gularis</i>	Black-chinned Honeyeater (eastern subspecies)	-	Vulnerable
<i>Daphoenositta chrysoptera</i>	Varied Sittella	-	Vulnerable
<i>Apus pacificus</i>	Fork-tailed Swift	Marine, Migratory	-
<i>Melanodryas cucullata</i>	Hooded Robin	-	Vulnerable
<i>Petroica boodang</i>	Scarlet Robin	-	Vulnerable
<i>Petroica phoenicea</i>	Flame Robin	Marine	Vulnerable
<i>Glossopsitta pusilla</i>	Little Lorikeet	-	Vulnerable
<i>Lathamus discolor</i>	Swift Parrot	Endangered	Endangered
<i>Ardea modesta (or Ardea alba)</i>	Eastern Great Egret, White Egret	Marine, Migratory	-
<i>Ardea ibis</i>	Cattle Egret	Marine, Migratory	-

<i>Gallinago hardwickii</i>	Latham's Snipe, Japanese Snipe	Marine, Migratory	-
<i>Ninox connivens</i>	Barking Owl	-	Vulnerable
<i>Tyto novaehollandiae</i>	Masked Owl	-	Vulnerable
<i>Ninox strenua</i>	Powerful Owl	-	Vulnerable
Gastropoda			
<i>Meridolum corneovirens</i>	Cumberland Plain Land Snail	-	Endangered
Mammalia			
<i>Cercartetus nanus</i>	Eastern Pygmy-possum	-	Vulnerable
<i>Dasyurus maculates</i>	Spotted-tailed Quoll	Endangered	Vulnerable
<i>Pseudomys novaehollandiae</i>	New Holland Mouse	Vulnerable	-
<i>Saccolaimus flaviventris</i>	Yellow-bellied Sheathtail- bat	-	Vulnerable
<i>Petrogale penicillata</i>	Brush-tailed Rock-wallaby	Vulnerable	Endangered
<i>Potorous tridactylus tridactylus</i>	Long-nosed Potoroo	Vulnerable	Vulnerable
<i>Mormopterus norfolkensis</i>	Eastern Freetail-bat	-	Vulnerable
<i>Petaurus norfolcensis</i>	Squirrel Glider	-	Vulnerable
<i>Phascolarctos cinereus</i>	Koala	-	Vulnerable
<i>Pteropus poliocephalus</i>	Grey-headed Flying-fox	Vulnerable	Vulnerable
<i>Falsistrellus tasmaniensis</i>	Eastern False Pipistrelle	-	Vulnerable
<i>Miniopterus schreibersii oceanensis</i>	Eastern Bentwing-bat	-	Vulnerable
<i>Myotis macropus</i>	Southern Myotis or Large- footed Myotis	-	Vulnerable
<i>Scoteanax rueppellii</i>	Greater Broad-nosed Bat	-	Vulnerable
<i>Chalinolobus dwyeri</i>	Large-eared Pied Bat	Vulnerable	Vulnerable
Reptilia			
<i>Hoplocephalus bungaroides</i>	Broad-headed Snake	Vulnerable	Endangered

Appendix E

Threatened Fauna Likelihood of Occurrence Table

The table below shows species listed under the *TSC Act* or the *EPBC Act*

Species Name	Common Name	Habitat	EPBC Act 2000	TSC Act 1995 Classification	Likelihood of Occurrence
Amphibia					
<i>Litoria aurea</i>	Green and Golden Bell Frog	Large permanent freshwater wetlands, with dense stands of reeds.	Vulnerable	Endangered	Possible
<i>Heleioporus australiacus</i>	Giant Burrowing Frog	Found in heath, woodland and open forest with sandy soils and will travel several hundred metres to creeks to breed.	Vulnerable	Vulnerable	Possible
<i>Litoria raniformis</i>	Growling Grass Frog, Southern Bell Frog, Green and Golden Frog, Warty Swamp Frog	Usually found in or around permanent or ephemeral Black Box/Lignum/Nitre Goosefoot swamps, Lignum/Typha swamps and River Red Gum swamps or billabongs along floodplains and river valleys.	Vulnerable	Endangered	Absent
<i>Mixophyes iteratus</i>	Southern Barred Frog, Giant Barred Frog	Forage and live amongst deep, damp leaf litter in rainforests, moist eucalypt forest and nearby dry eucalypt forest, at elevations below 1000 m.	Endangered	Endangered	Absent
<i>Pseudophryne australis</i>	Red-crowned Toadlet	Usually found as small colonies scattered along ridges coinciding with the positions of suitable refuges near breeding sites. Occurs in open forests, mostly on Hawkesbury and Narrabeen Sandstones.	-	Vulnerable	Present
Aves					
<i>Oxyura australis</i>	Blue-billed Duck	Well vegetated freshwater swamps, large dams, lakes. In winter more open waters.	-	Vulnerable	Unlikely
<i>Stictonetta naevosa</i>	Freckled Duck	Prefer permanent freshwater swamps and creeks with heavy growth of Cumbungi, Lignum or Tea-tree. During drier times they move from ephemeral breeding swamps to more permanent waters such as lakes, reservoirs, farm dams and sewage ponds.	-	Vulnerable	Possible
<i>Anthochaera phrygia</i>	Regent Honeyeater	Densely timbered woodlands and forests, particularly ironbark, yellow box, yellow gum.	Endangered	Endangered	Likely

Species Name	Common Name	Habitat	EPBC Act 2000	TSC Act 1995 Classification	Likelihood of Occurrence
<i>Pyrrholaemus saggitatus</i>	Speckled Warbler	Lives in a wide range of eucalypt dominated communities that have a grassy understorey, often on rocky ridges or in gullies. Typical habitat would include scattered native tussock grasses, a sparse shrub layer, some eucalypt regrowth and an open canopy.	-	Vulnerable	Present
<i>Circus assimilis</i>	Spotted Harrier	Occurs in grassy open woodland including acacia and mallee remnants, inland riparian woodland, grassland and shrub steppe. It is found most commonly in native grassland, but also occurs in agricultural land, foraging over open habitats including edges of inland wetlands.	-	Vulnerable	Possible
<i>Stagonopleura guttata</i>	Diamond Firetail	Found in grassy eucalypt woodlands, including Box-Gum Woodlands and Snow Gum Eucalyptus pauciflora Woodlands. Often found in riparian areas (rivers and creeks), and sometimes in lightly wooded farmland.	-	Vulnerable	Likely
<i>Haliaeetus leucogaster</i>	White-bellied Sea-Eagle	Established pairs usually maintain a territory in coastal areas or flooded inland swamps, lagoons and floodplains. Also often occur far inland along major rivers.	Marine, Migratory	-	Present
<i>Hirundapus caudacutus</i>	White-throated Needletail	Occupy high open spaces of sky above a variety of habitats including oceans. Often fly ahead of unsettled weather preceding thunderstorms.	Marine, Migratory	-	Unlikely
<i>Hieraaetus morphnoides</i>	Little Eagle	Open eucalypt forest, woodland or open woodland. Sheoak or acacia woodlands and riparian woodlands of interior NSW are also used. Nests in tall living rees within a remnant patch, where pairs build a large stick nest in winter.	-	Vulnerable	Present
<i>Lophoictinia isura</i>	Square-tailed Kite	Diverse habitats from woodlands to timbered watercourses.	-	Vulnerable	Likely
<i>Burhinus grallarius</i>	Bush Stone-curlew	Open forests and woodlands with a sparse grassy groundlayer and fallen timber.	-	Endangered	Possible
<i>Callocephalon fimbriatum</i>	Gang-gang Cockatoo	Occurs within a variety of forest and woodland types.	-	Vulnerable	Highly Likely

Species Name	Common Name	Habitat	EPBC Act 2000	TSC Act 1995 Classification	Likelihood of Occurrence
<i>Calyptorhynchus lathami</i>	Glossy Black-Cockatoo	She-oaks in forests, woodlands, timbered watercourses.	Endangered (SA)	Vulnerable	Present
<i>Merops ornatus</i>	Rainbow Bee-eater	Open country in a variety of habitat including open woodland, open forest, semi-arid scrub, grasslands, clearings in more wooded areas and farmland.	Marine, Migratory	-	Present
<i>Monarcha melanopsis</i>	Black-faced Monarch	Occurs in a range of habitats including rainforests, mangroves, forests and woodlands. A summer migrant to the south.	Marine, Migratory	-	Present
<i>Myiagra cyanoleuca</i>	Satin Flycatcher	Favours dense wet sclerophyll forest during the breeding season and mangrove, coastal heath, woodland and forests outside of the breeding season. A summer breeding migrant to south eastern Australia	Marine, Migratory	-	Present
<i>Rhipidura rufifrons</i>	Rufous Fantail	A summer breeding migrant in the south east of Australia. Occurs in rainforest as well as dense wet eucalypt forest, paperbark forests, mangrove swamps and riverside vegetation. Occupies open country during summer migration.	Marine, Migratory	-	Present
<i>Epthianura albifrons</i>	White-fronted Chat	Along the coastline, it is found predominantly in saltmarsh vegetation but also in open grasslands and sometimes in low shrubs bordering wetland areas. Usually found foraging on bare or grassy ground in wetland areas, singly or in pairs.	-	Vulnerable	Absent
<i>Melithreptus gularis gularis</i>	Black-chinned Honeyeater (eastern subspecies)	Occupies mostly upper levels of drier open forests or woodlands dominated by box and ironbark eucalypts, especially Mugga Ironbark, White Box, Inland Grey Box, Yellow Box (and Forest Red Gum. Also inhabits open forests of smooth-barked gums, stringybarks, ironbarks and tea-trees.	-	Vulnerable	Present
<i>Daphoenositta chrysoptera</i>	Varied Sittella	Eucalypt forests and woodlands, especially rough-barked species and mature smooth-barked gums with dead branches, mallee and Acacia woodland	-	Vulnerable	Present

Species Name	Common Name	Habitat	EPBC Act 2000	TSC Act 1995 Classification	Likelihood of Occurrence
<i>Apus pacificus</i>	Fork-tailed Swift	Utilises low to very high airspace over varied habitat from rainforest to semi-desert. Foragers ahead of summer storms.	Marine, Migratory	-	Possible
<i>Melanodryas cucullata</i>	Hooded Robin	Drier eucalypt forests, woodlands and scrubs with fallen logs and debris.	-	Vulnerable	Likely
<i>Petroica boodang</i>	Scarlet Robin	Forests and woodlands, but some adults and young birds disperse to more open habitats after breeding. Found in dry eucalypt forests and woodlands. The understorey is usually open and grassy with few scattered shrubs.	-	Vulnerable	Present
<i>Petroica phoenicea</i>	Flame Robin	Breeds in upland tall moist eucalypt forests and woodlands, often on ridges and slopes. Prefers clearings or areas with open understoreys. In winter lives in dry forests, open woodlands and in pastures and native grasslands, with or without scattered trees.	Marine	Vulnerable	Possible
<i>Glossopsitta pusilla</i>	Little Lorikeet	Forages primarily in the canopy of open Eucalyptus forest and woodland, yet also finds food in Angophoras, Melaleucas and other tree species.	-	Vulnerable	Present
<i>Lathamus discolor</i>	Swift Parrot	Breeds in Tasmania, but winters on mainland in diverse timbered habitats, including forests, woodlands, plantations, banksias, street trees and gardens.	Endangered	Endangered	Present
<i>Ardea alba (or Ardea modesta)</i>	Eastern Great Egret, White Egret	A common and widespread species that utilises any suitable permanent or temporary habitat. Inhabits wetlands and flooded pastures, dams, estuarine mudflats, mangroves and reefs.	Marine, Migratory	-	Present
<i>Ardea ibis</i>	Cattle Egret	Forages in moist pasture with tall grass as well as shallow open wetlands and margins. Also utilises mudflats.	Marine, Migratory	-	Present
<i>Gallinago hardwickii</i>	Latham's Snipe, Japanese Snipe	Occupies low vegetation around wetlands in shallows, sedges, reeds, heaths salt marsh and irrigated crops.	Marine, Migratory	-	Possible
<i>Rostratula benghalensis australis</i>	Australian Painted Snipe	Well-vegetated shallows and margins of wetlands, dams, sewerage	Vulnerable, Marine,	Endangered	Possible

Species Name	Common Name	Habitat	EPBC Act 2000	TSC Act 1995 Classification	Likelihood of Occurrence
(or <i>Rostratula australis</i>)		ponds, wet pastures, marshy areas, open timber.	Migratory		
<i>Tyto novaehollandiae</i>	Masked Owl	Extends from the coast where it is most abundant to the western plains. Roosts and breeds in moist eucalypt forested gullies, using large tree hollows or sometimes caves for nesting. Lives in dry eucalypt forests and woodlands from sea level to 1100 m.	-	Vulnerable	Likely
<i>Ninox connivens</i>	Barking Owl	Open forests, woodlands, dense scrubs, other large trees near watercourses. Nest in tree hollow.	-	Vulnerable	Possible
<i>Ninox strenua</i>	Powerful Owl	Pairs occupy large, probably permanent home ranges in forests to woodlands. Nest in large hollow.	-	Vulnerable	Present
Gastropoda					
<i>Meridolum corneovirens</i>	Cumberland Plain Land Snail	Primarily inhabits Cumberland Plain Woodland (an endangered ecological community). This community is grassy, open woodland with occasional dense patches of shrubs.	-	Endangered	Present
Mammalia					
<i>Cercartetus nanus</i>	Eastern Pygmy-possum	Found in a broad range of habitats from rainforest through sclerophyll (including Box-Ironbark) forest and woodland to heath, but in most areas woodlands and heath appear to be preferred.	-	Vulnerable	Possible
<i>Dasyurus maculatus</i>	Spotted-tailed Quoll	Recorded across a range of habitat types, including rainforest, open forest, woodland, coastal heath and inland riparian forest, from the sub-alpine zone to the coastline.	Endangered	Vulnerable	Possible
<i>Pseudomys novaehollandiae</i>	New Holland Mouse	Known to inhabit open heathlands, open woodlands with a heathland understorey, and vegetated sand dunes.	Vulnerable	-	Unlikely
<i>Saccolaimus flaviventris</i>	Yellow-bellied Sheath-tail-bat	In almost all habitats from wet and dry sclerophyll forests, open	-	Vulnerable	Possible

Species Name	Common Name	Habitat	EPBC Act 2000	TSC Act 1995 Classification	Likelihood of Occurrence
		woodland, Acacia shrubland, mallee, grasslands and desert.			
<i>Petrogale penicillata</i>	Brush-tailed Rock-wallaby	Rocky areas of sclerophyll forest of inland and subcoastal south-eastern Australia.	Vulnerable	Endangered	Absent
<i>Potorous tridactylus tridactylus</i>	Long-nosed Potoroo	Known from coastal healthy woodland but also occurs in rainforest, wet sclerophyll and coastal wallum. Dense cover for shelter adjacent to open areas for foraging.	Vulnerable	Vulnerable	Unlikely
<i>Mormopterus norfolkensis</i>	Eastern Freetail-bat	Evidence suggests that the species depends on hollows and tree fissures for roosting sites.	-	Vulnerable	Present
<i>Petaurus norfolcensis</i>	Squirrel Glider	Mostly in dry sclerophyll forest on inland slopes and nearby riverine corridors. Also in damp coastal eucalypt/banksia forest and woodland.	-	Vulnerable	Highly Likely
<i>Phascolarctos cinereus</i>	Koala	Swamp Mahogany and Tallowood are of primary importance to this Koala population. Other local native tree species used by Koalas include Broad-leaved Paperbark, Blackbutt, Red Bloodwood, Flooded Gum and Smooth barked Apple.	-	Vulnerable	Present
<i>Pteropus poliocephalus</i>	Grey-headed Flying-fox	Roosts in large camps in Botanic Gardens.	Vulnerable	Vulnerable	Present
<i>Falsistrellus tasmaniensis</i>	Eastern False Pipistrelle	Usually roosts in tree hollows in the higher rainfall forests within its range.	-	Vulnerable	Present
<i>Miniopterus schreibersii oceanensis</i>	Eastern Bentwing-bat	Forages above the canopy and eats mostly moths. Roosts in caves, old mines, road culverts.	-	Vulnerable	Present
<i>Myotis macropus</i>	Southern Myotis or Large-footed Myotis	Roost close to water in caves, mine shafts, hollow-bearing trees, and storm water channels, buildings, under bridges and in dense foliage.	-	Vulnerable	Present
<i>Scoteanax rueppellii</i>	Greater Broad-nosed Bat	Moist gullies in mature coastal forests or rainforests. Roosts in hollow tree trunks and branches.	-	Vulnerable	Present

Species Name	Common Name	Habitat	EPBC Act 2000	TSC Act 1995 Classification	Likelihood of Occurrence
<i>Chalinolobus dwyeri</i>	Large-eared Pied Bat	Uncommon but observed in wet and dry eucalypt forests.	Vulnerable	Vulnerable	Unlikely
Reptilia					
<i>Hoplocephalus bungaroides</i>	Broad-headed Snake	Occur under large exfoliating slabs of sandstone and rock crevices in areas of undisturbed bushland, usually on tops of cliffs.	Vulnerable	Endangered	Unlikely

Appendix F

Flora List

A search of the *NSW Wildlife Atlas Database*, the *EPBC Protected Matters Database* and the *Botanic Gardens Trust PlantNet Database* undertaken in August 2010, identified 2,178 flora species occurring in Liverpool and Camden LGAs. These species included 1,536 native species and 642 exotic species (**Table F1**). A list of the threatened flora species is presented in **Table F2**. Twenty-five species are listed under either the *TSC Act* or the *EPBC Act*.

Table F1 Full floristic list for the Liverpool and Camden LGAs.

Scientific Name	Common Name	Native or Exotic	Last Sited
<i>Avicennia marina subsp. australasica</i>	Grey Mangrove	Native	17/09/2008
<i>Brunoniella australis</i>	Blue Trumpet	Native	23/07/2009
<i>Brunoniella pumilio</i>	Dwarf Blue Trumpet	Native	25/10/2004
<i>Pseuderanthemum variabile</i>	Pastel Flower	Native	5/09/2007
<i>Thunbergia alata</i>	Black-eyed Susan	Exotic	26/03/2007
<i>Adiantum aethiopicum</i>	Common Maidenhair	Native	17/07/2008
<i>Adiantum atroviride</i>		Native	27/05/1987
<i>Adiantum diaphanum</i>	Filmy Maidenhair	Native	17/07/2008
<i>Adiantum formosum</i>	Giant Maidenhair	Native	4/03/2008
<i>Adiantum hispidulum</i>	Rough Maidenhair	Native	27/02/2004
<i>Adiantum hispidulum var. hispidulum</i>	Rough Maidenhair	Native	4/03/2008
<i>Adiantum hispidulum var. hypoglaucum</i>		Native	4/03/2008
<i>Adiantum silvaticum</i>		Native	30/06/1895
<i>Cheilanthes austrotenuifolia</i>	Rock Fern	Native	13/01/2004
<i>Cheilanthes distans</i>	Bristly Cloak Fern	Native	30/09/1897
<i>Cheilanthes sieberi</i>	Rock Fern	Native	23/07/2009
<i>Cheilanthes sieberi subsp. sieberi</i>	Rock Fern	Native	13/03/2008
<i>Pellaea caldirupium</i>		Native	20/07/1990
<i>Pellaea falcata</i>	Sickle Fern	Native	17/07/2008
<i>Sambucus australasica</i>	Native Elderberry	Native	31/05/1896
<i>Sambucus gaudichaudiana</i>	White Elderberry	Native	30/06/1913
<i>Viburnum suspensum</i>		Exotic	1/06/2009
<i>Agave americana</i>	Century Plant	Exotic	1/06/2009
<i>Aptenia cordifolia</i>	Heartleaf Ice Plant	Exotic	25/10/2004
<i>Carpobrotus glaucescens</i>	Pigface	Native	17/09/2008
<i>Tetragonia tetragonioides</i>	New Zealand Spinach	Native	20/03/1894
<i>Alisma plantago-aquatica</i>	Water Plantain	Native	25/05/2006
<i>Damasonium minus</i>	Starfruit	Native	22/10/2004
<i>Sagittaria platyphylla</i>	Sagittaria	Exotic	24/11/1985
<i>Allium triquetrum</i>	Three-corned Garlic	Exotic	1/06/2009
<i>Nothoscordum borbonicum</i>	Onion Weed	Exotic	1/06/2009
<i>Alstroemeria pulchella</i>	Parrot Alstroemeria	Exotic	29/11/1969
<i>Alternanthera denticulata</i>	Lesser Joyweed	Native	22/01/1895
<i>Alternanthera nana</i>	Hairy Joyweed	Native	14/01/2005
<i>Alternanthera philoxeroides</i>	Alligator Weed	Exotic	13/03/2008
<i>Alternanthera pungens</i>	Khaki Weed	Exotic	14/03/2008
<i>Alternanthera sp. A</i>		Native	1/03/1992
<i>Amaranthus albus</i>	Tumbleweed	Exotic	17/03/1968
<i>Amaranthus deflexus</i>	Spreading Amaranth	Exotic	1/01/1966
<i>Amaranthus hybridus</i>	Slim Amaranth	Exotic	20/10/2004
<i>Amaranthus macrocarpus var. macrocarpus</i>		Native	22/03/1974
<i>Amaranthus mitchellii</i>	Boggabri Weed	Native	2/03/1969
<i>Amaranthus powellii</i>	Powell's Amaranth	Exotic	11/05/1982

Scientific Name	Common Name	Native or Exotic	Last Sited
<i>Amaranthus retroflexus</i>	Redroot Amaranth	Exotic	15/04/1968
<i>Amaranthus spp.</i>	Amaranth	Native	20/12/2005
<i>Amaranthus viridis</i>	Green Amaranth	Exotic	13/03/2008
<i>Deeringia amaranthoides</i>		Native	28/05/1996
<i>Gomphrena celosoides</i>	Gomphrena Weed	Exotic	13/03/2008
<i>Nyssanthus diffusa</i>	Barbwire Weed	Native	15/11/1985
<i>Crinum pedunculatum</i>	Swamp Lily	Native	19/11/2004
<i>Prunus persica</i>		Exotic	11/10/1969
<i>Prunus spp.</i>		Exotic	17/01/2008
<i>Schinus areira</i>	Pepper Tree	Exotic	1/06/2009
<i>Schinus spp.</i>		Exotic	2/04/2004
<i>Schinus terebinthifolius</i>	Brazilian Pepper Tree	Exotic	14/03/2008
<i>Alania endlicheri</i>		Native	31/03/1897
<i>Arthropodium milleflorum</i>	Pale Vanilla-lily	Native	16/05/2006
<i>Arthropodium minus</i>	Small Vanilla Lily	Native	14/07/2009
<i>Arthropodium sp. B</i>		Native	13/03/2008
<i>Arthropodium spp.</i>		Native	6/06/2008
<i>Caesia parviflora</i>	Pale Grass-lily	Native	5/09/2007
<i>Caesia parviflora var. parviflora</i>		Native	31/12/1896
<i>Caesia parviflora var. vittata</i>		Native	13/01/1999
<i>Chlorophytum comosum</i>	Spider Plant	Exotic	1/06/2009
<i>Dichopogon fimbriatus</i>	Nodding Chocolate Lily	Native	17/09/2008
<i>Laxmannia gracilis</i>	Slender Wire Lily	Native	03/11/1881
<i>Thysanotus juncifolius</i>		Native	18/01/2005
<i>Thysanotus tuberosus</i>	Common Fringe-lily	Native	22/12/2003
<i>Thysanotus tuberosus subsp. tuberosus</i>		Native	14/12/1998
<i>Tricoryne elatior</i>	Yellow Autumn-lily	Native	23/07/2009
<i>Tricoryne simplex</i>		Native	22/12/2003
<i>Tricoryne spp.</i>		Native	14/04/2004
<i>Aphanopetalum resinsum</i>	Gum Vine	Native	30/09/1886
<i>Actinotus helianthi</i>	Flannel Flower	Native	30/11/1893
<i>Actinotus minor</i>	Lesser Flannel Flower	Native	5/09/2007
<i>Ammi majus</i>	Bishop's Weed	Exotic	31/03/1980
<i>Apium australe</i>		Native	24/04/1965
<i>Apium graveolens</i>	Celery	Exotic	24/01/2005
<i>Apium prostratum</i>	Sea Celery	Native	5/06/1996
<i>Apium prostratum var. prostratum</i>		Native	2/11/1997
<i>Centella asiatica</i>	Indian Pennywort	Native	23/07/2009
<i>Centella spp.</i>		Native	7/01/2004
<i>Conium maculatum</i>	Hemlock	Exotic	26/11/1966
<i>Cyclospermum leptophyllum</i>	Slender Celery	Exotic	23/07/2009
<i>Daucus carota</i>	Wild Carrot	Exotic	13/03/2008
<i>Daucus glochidiatus</i>	Native Carrot	Native	25/11/1998
<i>Foeniculum vulgare</i>	Fennel	Exotic	1/06/2009
<i>Hydrocotyle bonariensis</i>		Exotic	17/09/2008
<i>Hydrocotyle geraniifolia</i>	Forest Pennywort	Native	1/03/2002
<i>Hydrocotyle laxiflora</i>	Stinking Pennywort	Native	1/03/2002
<i>Hydrocotyle peduncularis</i>	A Pennywort	Native	14/07/2009
<i>Hydrocotyle sp. aff. acutiloba</i>		Native	3/07/1977
<i>Hydrocotyle spp.</i>		Exotic	6/06/2003

Scientific Name	Common Name	Native or Exotic	Last Sited
<i>Hydrocotyle tripartita</i>	Pennywort	Native	24/01/1970
<i>Hydrocotyle verticillata</i>	Shield Pennywort	Native	27/02/1997
<i>Lilaeopsis polyantha</i>	Lilaeopsis	Native	10/04/1993
<i>Platysace ericoides</i>		Native	25/11/1988
<i>Platysace lanceolata</i>	Shrubby Platysace	Native	07/01/1888
<i>Platysace linearifolia</i>		Native	17/09/2008
<i>Platysace spp.</i>		Native	1/08/2003
<i>Trachymene incisa</i>	Trachymene	Native	7/08/2002
<i>Trachymene incisa subsp. incisa</i>		Native	31/05/1898
<i>Trachymene spp.</i>	Trachymene	Native	30/11/2000
<i>Xanthosia pilosa</i>	Woolly Xanthosia	Native	30/11/1898
<i>Xanthosia stellata</i>	Star Xanthosia	Native	28/09/1968
<i>Xanthosia tridentata</i>	Rock Xanthosia	Native	5/09/2007
<i>Araujia sericifera</i>	Moth Vine	Exotic	1/06/2009
<i>Cynanchum elegans</i>	White-flowered Wax Plant	Native	4/03/2008
<i>Gomphocarpus fruticosus</i>	Narrow-leaved Cotton Bush	Exotic	17/02/1894
<i>Gomphocarpus physocarpus</i>	Balloon Cotton Bush	Exotic	5/09/2007
<i>Marsdenia flavescens</i>	Hairy Milk Vine	Native	12/03/1976
<i>Marsdenia lloydii</i>	Corky Marsdenia	Native	4/03/2008
<i>Marsdenia rostrata</i>	Milk Vine	Native	12/03/1976
<i>Marsdenia suaveolens</i>	Scented Marsdenia	Native	1/03/2002
<i>Marsdenia viridiflora subsp. viridiflora</i>	Marsdenia viridiflora R. Br. subsp. viridiflora population in the Bankstown, Blacktown, Camden, Campbelltown, Fairfield, Holroyd, Liverpool and Penrith local government areas	Native	20/02/2009
<i>Nerium oleander</i>	Oleander	Exotic	1/06/2009
<i>Parsonsia lanceolata</i>	Rough Silkpod	Native	16/07/1990
<i>Parsonsia straminea</i>	Common Silkpod	Native	31/12/1895
<i>Tylophora barbata</i>	Bearded Tylophora	Native	12/03/1976
<i>Vinca major</i>	Periwinkle	Exotic	17/09/2008
<i>Typhonium brownii</i>		Native	29/02/1896
<i>Zantedeschia aethiopica</i>	Arum Lily	Exotic	1/06/2009
<i>Astrotricha floccosa</i>		Native	1/03/2002
<i>Astrotricha latifolia</i>		Native	1/03/2002
<i>Astrotricha longifolia</i>		Native	1/03/2002
<i>Polyscias sambucifolia</i>	Elderberry Panax	Native	5/09/2007
<i>Polyscias sambucifolia subsp. sambucifolia</i>		Native	23/11/1965
<i>Archontophoenix alexandrae</i>	Alexandra Palm	Exotic	2/04/2004
<i>Livistona australis</i>	Cabbage Palm	Native	3/04/2005
<i>Phoenix canariensis</i>	Canary Island Date Palm	Exotic	1/06/2009
<i>Asparagus aethiopicus</i>	Asparagus Fern	Exotic	14/11/2005
<i>Asparagus asparagoides</i>	Bridal Creeper	Exotic	1/06/2009
<i>Asparagus officinalis</i>	Asparagus	Exotic	20/03/2009
<i>Asparagus plumosus</i>	Climbing Asparagus Fern	Exotic	13/01/2004
<i>Asparagus virgatus</i>	Asparagus Fern	Exotic	14/11/2005
<i>Myrsiphyllum spp.</i>		Exotic	6/06/2003
<i>Aloe maculata</i>	Common Soap Aloe	Exotic	13/03/2008
<i>Aloe spp.</i>		Exotic	24/01/2005
<i>Asphodelus fistulosus</i>	Onion Weed	Exotic	26/03/2007
<i>Bulbine bulbosa</i>	Bulbine Lily	Native	11/11/2003

Scientific Name	Common Name	Native or Exotic	Last Sited
<i>Trachyandra divaricata</i>		Exotic	4/03/2008
<i>Asplenium australasicum</i>	Bird's Nest Fern	Native	1/03/2002
<i>Asplenium difforme</i>		Native	2/08/1987
<i>Asplenium flabellifolium</i>	Necklace Fern	Native	4/03/2008
<i>Ageratina adenophora</i>	Crofton Weed	Exotic	1/06/2009
<i>Ageratina riparia</i>	Mistflower	Exotic	22/09/1955
<i>Ageratum houstonianum</i>		Exotic	25/03/1971
<i>Ambrosia artemisiifolia</i>	Annual Ragweed	Exotic	13/03/2008
<i>Ambrosia tenuifolia</i>	Lacy Ragweed	Exotic	9/04/2001
<i>Arctotheca calendula</i>	Capeweed	Exotic	16/11/1893
<i>Artemisia verlotiorum</i>	Chinese Wormwood	Exotic	20/10/2004
<i>Aster spp.</i>		Exotic	1/06/2009
<i>Aster subulatus</i>	Wild Aster	Exotic	20/03/2009
<i>Bidens pilosa</i>	Cobbler's Pegs	Exotic	1/06/2009
<i>Bidens subalternans</i>	Greater Beggar's Ticks	Exotic	17/09/2008
<i>Bidens tripartita</i>	Burr Marigold	Exotic	1/06/2009
<i>Brachyscome angustifolia</i>		Native	7/08/2002
<i>Brachyscome linearifolia</i>		Native	26/11/1998
<i>Calendula arvensis</i>	Field Marigold	Exotic	23/11/1919
<i>Calomeria amaranthoides</i>	Incense Plant	Native	26/03/1921
<i>Calotis cuneifolia</i>	Purple Burr-Daisy	Native	5/09/2007
<i>Calotis dentex</i>	Burr-daisy	Native	31/10/1893
<i>Calotis hispidula</i>	Bogan Flea	Native	30/09/1913
<i>Calotis lappulacea</i>	Yellow Burr-daisy	Native	13/03/2008
<i>Carduus pycnocephalus</i>	Slender Thistle	Exotic	15/11/1985
<i>Carthamus lanatus</i>	Saffron Thistle	Exotic	25/10/2004
<i>Cassinia aculeata</i>	Dolly Bush	Native	22/10/2004
<i>Cassinia arcuata</i>	Sifton Bush	Native	17/01/2008
<i>Cassinia aureonitens</i>		Native	16/12/1963
<i>Cassinia compacta</i>		Native	25/10/2004
<i>Cassinia denticulata</i>		Native	27/02/2004
<i>Cassinia longifolia</i>		Native	27/11/1886
<i>Cassinia quinquefaria</i>		Native	15/07/1992
<i>Cassinia spp.</i>		Native	7/08/2002
<i>Cassinia trinerva</i>		Native	14/01/1994
<i>Cassinia uncata</i>	Sticky Cassinia	Native	5/09/2007
<i>Centaurea melitensis</i>	Maltese Cockspur	Exotic	12/09/1954
<i>Centaurea solstitialis</i>	St Barnabys Thistle	Exotic	2/03/1962
<i>Centaurea spp.</i>	Thistle	Exotic	30/03/1999
<i>Centipeda cunninghamii</i>	Common Sneezeweed	Native	3/01/1970
<i>Centipeda minima</i>	Spreading Sneezeweed	Native	22/10/2004
<i>Centipeda minima var. minima</i>		Native	31/05/1893
<i>Centipeda nidiformis</i>		Native	1/06/1968
<i>Centipeda pleiocephala</i>		Native	8/04/1967
<i>Chondrilla juncea</i>	Skeleton Weed	Exotic	27/01/1969
<i>Chrysanthemoides monilifera subsp. monilifera</i>	Boneseed	Exotic	4/03/2008
<i>Chrysanthemoides monilifera subsp. rotundata</i>	Bitou Bush	Exotic	17/09/2008
<i>Chrysocephalum apiculatum</i>	Common Everlasting	Native	25/11/1892
<i>Chrysocephalum semipapposum</i>	Clustered Everlasting	Native	28/03/1991

Scientific Name	Common Name	Native or Exotic	Last Sited
<i>Cichorium intybus</i>	Chicory	Exotic	30/04/1894
<i>Cirsium vulgare</i>	Spear Thistle	Exotic	23/07/2009
<i>Conyza bonariensis</i>	Flaxleaf Fleabane	Exotic	1/06/2009
<i>Conyza canadensis</i> var. <i>canadensis</i>	Canadian Fleabane	Exotic	3/04/2005
<i>Conyza parva</i>	Fleabane	Exotic	13/03/2008
<i>Conyza</i> spp.	A Fleabane	Exotic	20/03/2009
<i>Conyza sumatrensis</i>	Tall fleabane	Exotic	23/07/2009
<i>Coreopsis lanceolata</i>	Coreopsis	Exotic	17/09/2008
<i>Coronidium scorpioides</i>	Button Everlasting	Native	31/08/1899
<i>Cotula australis</i>	Common Cotula	Native	11/03/1971
<i>Cotula coronopifolia</i>	Water Buttons	Exotic	03/11/1894
<i>Craspedia variabilis</i>	Common Billy-buttons	Native	24/10/1964
<i>Crassocephalum crepidioides</i>	Thickhead	Exotic	18/06/2003
<i>Cymbonotus lawsonianus</i>	Bear's Ear	Native	16/07/2009
<i>Cynara scolymus</i>	Globe Artichoke	Exotic	25/01/1969
<i>Delairea odorata</i>	Cape Ivy	Exotic	5/09/2007
<i>Dittrichia graveolens</i>	Stinkwort	Exotic	5/04/1949
<i>Eclipta platyglossa</i>	Yellow Twin-heads	Native	16/05/2006
<i>Eclipta prostrata</i>		Native	9/05/2006
<i>Epaltes australis</i>	Spreading Nut-heads	Native	25/10/2004
<i>Erigeron karvinskianus</i>	Bony-tip Fleabane	Exotic	23/02/1991
<i>Euchiton gymnocephalus</i>	Creeping Cudweed	Native	22/10/2004
<i>Euchiton involucratus</i>	Star Cudweed	Native	1/06/2009
<i>Euchiton sphaericus</i>	Star Cudweed	Native	14/07/2009
<i>Facelis retusa</i>		Exotic	25/10/2004
<i>Galinsoga parviflora</i>	Potato Weed	Exotic	20/10/2004
<i>Gamochaeta americana</i>	Cudweed	Exotic	14/07/2009
<i>Gamochaeta antillana</i>		Exotic	30/09/1984
<i>Gamochaeta calviceps</i>	Cudweed	Exotic	21/01/1999
<i>Gamochaeta pensylvanica</i>	Cudweed	Exotic	21/10/1893
<i>Gamochaeta spicata</i>	Cudweed	Exotic	20/03/2009
<i>Gazania</i> spp.		Exotic	15/11/2006
<i>Glossocardia bidens</i>	Cobbler's Tack	Native	28/02/1879
<i>Gymnocoronis spilanthoides</i>	Senegal Tea	Exotic	28/02/1991
<i>Hedynois rhagadioloides</i> subsp. <i>cretica</i>	Cretan Weed	Exotic	1/11/1969
<i>Helianthus annuus</i>	Common Sunflower	Exotic	1/06/1968
<i>Helianthus tuberosus</i>	Jerusalem Artichoke	Exotic	25/03/1971
<i>Helichrysum</i> spp.		Native	18/01/2005
<i>Hypochaeris glabra</i>	Smooth Catsear	Exotic	1/06/2009
<i>Hypochaeris microcephala</i> var. <i>albiflora</i>	White Flatweed	Exotic	19/11/2004
<i>Hypochaeris radicata</i>	Catsear	Exotic	31/10/1893
<i>Lactuca serriola</i>	Prickly Lettuce	Exotic	16/07/2009
<i>Lagenophora gracilis</i>	Slender Lagenophora	Native	13/01/1999
<i>Lagenophora stipitata</i>	Common Lagenophora	Native	25/10/2004
<i>Leontodon taraxacoides</i> subsp. <i>taraxacoides</i>	Lesser Hawkbit	Exotic	13/01/2004
<i>Leptorhynchos nitidulus</i>		Native	21/09/1992
<i>Ligularia tusseloginea</i>		Exotic	30/04/1989
<i>Olearia microphylla</i>		Native	20/10/2004
<i>Olearia quercifolia</i>	Oak-leaved Olearia	Native	22/08/1989
<i>Olearia tomentosa</i>	Toothed Daisy-bush	Native	1/03/2002

Scientific Name	Common Name	Native or Exotic	Last Sited
<i>Olearia viscidula</i>	Wallaby Weed	Native	28/08/2004
<i>Onopordum acanthium subsp. acanthium</i>	Scotch Thistle	Exotic	17/09/2008
<i>Osteospermum ecklonis</i>	Cape Daisy	Exotic	7/08/2007
<i>Ozothamnus adnatus</i>	Winged Everlasting	Native	15/01/2002
<i>Ozothamnus diosmifolius</i>	White Dogwood	Native	20/03/2009
<i>Ozothamnus rufescens</i>		Native	22/08/1894
<i>Picris hieracioides</i>	Hawkweed Picris	Exotic	23/07/2009
<i>Podolepis jaceoides</i>	Showy Copper-wire Daisy	Native	16/09/1967
<i>Pseudognaphalium luteoalbum</i>	Jersey Cudweed	Native	15/03/1890
<i>Rhodanthe anthemoides</i>		Native	10/12/1993
<i>Rhodanthe chlorocephala subsp. rosea</i>		Native	14/09/1966
<i>Roldana petasitis</i>		Exotic	11/10/1969
<i>Senecio angulatus</i>		Exotic	20/12/2005
<i>Senecio bipinnatisectus</i>		Native	1/02/1965
<i>Senecio diaschides</i>		Native	24/01/1989
<i>Senecio hispidulus</i>	Hill Fireweed	Native	13/03/2008
<i>Senecio lautus</i>	Variable Groundsel	Native	11/03/1971
<i>Senecio linearifolius var. arachnoideus</i>		Native	21/10/1893
<i>Senecio linearifolius var. glaucus ms.</i>		Native	29/04/1967
<i>Senecio madagascariensis</i>	Fireweed	Exotic	23/07/2009
<i>Senecio minimus</i>		Native	31/12/1891
<i>Senecio prenanthoides</i>		Native	22/10/1966
<i>Senecio pterophorus</i>		Exotic	23/02/1995
<i>Senecio quadridentatus</i>	Cotton Fireweed	Native	19/11/2004
<i>Senecio queenslandicus</i>		Native	23/10/1965
<i>Senecio spp.</i>	Groundsel, Fireweed	Exotic	17/09/2008
<i>Senecio vagus subsp. eglandulosus</i>		Native	17/10/1896
<i>Sigesbeckia orientalis subsp. orientalis</i>	Indian Weed	Native	1/06/2009
<i>Sigesbeckia spp.</i>		Native	25/10/2004
<i>Silybum marianum</i>	Variegated Thistle	Exotic	15/11/1985
<i>Solenogyne bellioides</i>	Solenogyne	Native	03/05/1899
<i>Solenogyne dominii</i>		Native	7/03/2005
<i>Solidago canadensis var. scabra</i>	Goldenrod	Exotic	27/04/1969
<i>Soliva anthemifolia</i>	Dwarf Jo-jo	Exotic	21/11/1969
<i>Soliva sessilis</i>	Bindyi	Exotic	14/07/2009
<i>Soliva stolonifera</i>	Jo-jo	Exotic	30/08/1955
<i>Sonchus asper subsp. glaucescens</i>	Prickly Sowthistle	Exotic	20/03/2009
<i>Sonchus oleraceus</i>	Common Sowthistle	Exotic	21/10/1893
<i>Sonchus spp.</i>	Sowthistle	Exotic	6/06/2003
<i>Tagetes minuta</i>	Stinking Roger	Exotic	1/06/2009
<i>Tagetes patula</i>		Exotic	26/03/1971
<i>Taraxacum officinale</i>	Dandelion	Exotic	1/06/2009
<i>Tolpis umbellata</i>		Exotic	6/12/1963
<i>Tragopogon porrifolius</i>	Salsify	Exotic	31/10/1893
<i>Triptilodiscus pygmaeus</i>	Common Sunray	Native	1/12/2003
<i>Vernonia cinerea</i>		Native	23/07/2009
<i>Vernonia cinerea var. cinerea</i>		Native	13/01/2004
<i>Vittadinia cervicularis var. subcervicularis</i>		Native	6/09/1964
<i>Vittadinia cuneata</i>	A Fuzzweed	Native	16/07/2009
<i>Vittadinia cuneata var. cuneata</i>	A Fuzzweed	Native	13/03/2008

Scientific Name	Common Name	Native or Exotic	Last Sited
<i>Vittadinia gracilis</i>	Woolly New Holland Daisy	Native	20/10/1946
<i>Vittadinia muelleri</i>	A Fuzzweed	Native	13/03/2008
<i>Vittadinia pustulata</i>	Fuzzweed	Native	21/02/2003
<i>Vittadinia</i> spp.	Fuzzweed	Native	27/04/2004
<i>Vittadinia sulcata</i>		Native	11/10/1899
<i>Xanthium occidentale</i>	Noogoora Burr	Exotic	20/03/2009
<i>Xanthium spinosum</i>	Bathurst Burr	Exotic	25/10/2004
<i>Xerochrysum bracteatum</i>	Golden Everlasting	Native	13/01/1999
<i>Xerochrysum viscosum</i>	Sticky Everlasting	Native	23/02/1991
<i>Azolla filiculoides</i>	Pacific Azolla	Native	15/11/2006
<i>Azolla pinnata</i>		Native	4/03/2008
<i>Impatiens</i> spp.		Exotic	22/12/2003
<i>Impatiens walleriana</i>		Exotic	6/06/2003
<i>Anredera cordifolia</i>	Madeira Vine	Exotic	1/06/2009
<i>Pandorea pandorana</i>	Wonga Wonga Vine	Native	9/07/2009
<i>Pandorea pandorana</i> subsp. <i>pandorana</i>	Wonga Wonga Vine	Native	28/05/1991
<i>Blandfordia nobilis</i>	Christmas Bells	Native	19/11/1966
<i>Blechnum camfieldii</i>		Native	30/06/1901
<i>Blechnum cartilagineum</i>	Gristle Fern	Native	5/09/2007
<i>Blechnum indicum</i>	Swamp Water Fern	Native	30/11/1899
<i>Blechnum minus</i>	Soft Water Fern	Native	17/07/2008
<i>Doodia aspera</i>	Prickly Rasp Fern	Native	4/03/2008
<i>Doodia australis</i>	Common Rasp Fern	Native	17/03/1976
<i>Doodia caudata</i>	Small Rasp Fern	Native	1/03/2002
<i>Amsinckia intermedia</i>	Common Fiddleneck	Exotic	27/10/1903
<i>Buglossoides arvensis</i>	Sheepweed	Exotic	4/11/1967
<i>Cynoglossum suaveolens</i>	Sweet Hound's-tongue	Native	1/11/1969
<i>Echium plantagineum</i>	Patterson's Curse	Exotic	19/11/2004
<i>Ehretia acuminata</i> var. <i>acuminata</i>	Koda	Native	12/03/1976
<i>Heliotropium amplexicaule</i>	Blue Heliotrope	Exotic	16/07/2009
<i>Heliotropium europaeum</i>	Potato Weed	Exotic	11/04/1969
<i>Brassica fruticulosa</i>	Twiggy Turnip	Exotic	1/06/2009
<i>Brassica juncea</i>	Indian Mustard	Exotic	13/03/2008
<i>Brassica napus</i>	Canola	Exotic	21/10/1972
<i>Brassica rapa</i> subsp. <i>sylvestris</i>	Turnip	Exotic	15/11/2006
<i>Brassica</i> spp.	Brassica	Exotic	17/09/2008
<i>Cakile maritima</i>	Sea Rocket	Exotic	17/09/2008
<i>Capsella bursa-pastoris</i>	Shepherd's Purse	Exotic	16/05/2006
<i>Cardamine flexuosa</i>	Wood Bittercress	Exotic	24/03/1971
<i>Cardamine paucijuga</i>		Native	6/06/2008
<i>Coronopus didymus</i>	Lesser Swinecress	Exotic	16/07/2009
<i>Diplotaxis muralis</i>	Wall Rocket	Exotic	12/09/1954
<i>Hirschfeldia incana</i>	Buchan Weed	Exotic	7/12/1987
<i>Lepidium africanum</i>	Common Peppercress	Exotic	1/06/2009
<i>Lepidium bonariense</i>	Argentine Peppercress	Exotic	26/04/1971
<i>Lepidium campestre</i>	Field Cress	Exotic	4/03/2008
<i>Lepidium draba</i>	Hoary Cress, White Weed	Exotic	15/09/1968
<i>Lepidium pseudohyssopifolium</i>	Peppercress	Native	17/01/2008
<i>Lepidium</i> spp.	A Peppercress	Exotic	1/06/2009
<i>Lobularia maritima</i>	Sweet Alyssum	Exotic	9/04/1966

Scientific Name	Common Name	Native or Exotic	Last Sited
<i>Raphanus raphanistrum</i>	Wild Radish	Exotic	18/10/1969
<i>Rapistrum rugosum</i>	Turnip Weed	Exotic	18/10/1969
<i>Rorippa gigantea</i>		Native	12/10/1929
<i>Rorippa laciniata</i>		Native	4/03/2008
<i>Rorippa nasturtium-aquaticum</i>	Watercress	Exotic	17/09/2004
<i>Sinapis alba</i>	White Mustard	Exotic	22/02/1968
<i>Sinapis arvensis</i>	Charlock	Exotic	22/09/1954
<i>Sisymbrium irio</i>	London Rocket	Exotic	31/08/1968
<i>Sisymbrium officinale</i>	Hedge Mustard	Exotic	15/10/1967
<i>Sisymbrium orientale</i>	Indian Hedge Mustard	Exotic	25/05/1968
<i>Buddleja madagascariensis</i>		Exotic	20/03/2009
<i>Opuntia aurantiaca</i>	Tiger Pear	Exotic	27/09/1980
<i>Opuntia monacantha</i>	Drooping Pear	Exotic	19/11/2004
<i>Opuntia spp.</i>		Exotic	1/06/2009
<i>Opuntia stricta</i>	Common Prickly Pear, Smooth Pest Pear	Exotic	1/06/2009
<i>Opuntia stricta var. stricta</i>	Common Prickly Pear	Exotic	20/10/2004
<i>Callitriche stagnalis</i>	Common Starwort	Exotic	31/10/1881
<i>Wahlenbergia communis</i>	Tufted Bluebell	Native	1/06/2009
<i>Wahlenbergia gracilis</i>	Sprawling Bluebell	Native	31/03/1898
<i>Wahlenbergia littorcola</i>		Native	6/11/1992
<i>Wahlenbergia luteola</i>	Bluebell	Native	23/07/2003
<i>Wahlenbergia multicaulis</i>	Tadgell's Bluebell	Native	28/11/1998
<i>Wahlenbergia spp.</i>	Bluebell	Native	18/12/2007
<i>Wahlenbergia stricta</i>	Tall Bluebell	Native	20/03/2009
<i>Wahlenbergia stricta subsp. stricta</i>	Tall Bluebell	Native	14/12/1998
<i>Cannabis sativa</i>	Indian Hemp	Exotic	31/10/1975
<i>Canna indica</i>	Tous-les-mois Arrowroot	Exotic	08/04/1867
<i>Lonicera japonica</i>	Japanese Honeysuckle	Exotic	20/03/2009
<i>Arenaria leptoclados</i>	Lesser Thyme-leaved Sandwort	Exotic	2/10/1967
<i>Cerastium glomeratum</i>	Mouse-ear Chickweed	Exotic	1/06/2009
<i>Gypsophila tubulosa</i>	Annual Chalkwort	Native	24/01/1970
<i>Paronychia brasiliiana</i>	Chilean Whitlow Wort, Brazilian Whitlow	Exotic	16/07/2009
<i>Petrorhagia nanteuillii</i>	Proliferous Pink	Exotic	17/09/2008
<i>Petrorhagia spp.</i>		Exotic	13/01/1999
<i>Petrorhagia velutina</i>	Velvet Pink	Exotic	5/10/1964
<i>Polycarpaea corymbosa var. minor</i>		Native	10/04/1976
<i>Polycarpon tetraphyllum</i>	Four-leaved Allseed	Exotic	19/11/2004
<i>Sagina apetala</i>	Annual Pearlwort	Exotic	2/10/1967
<i>Scleranthus biflorus</i>	Two-flowered Knawel	Native	24/01/1970
<i>Silene gallica</i>	French Catchfly	Exotic	15/11/1985
<i>Silene gallica var. gallica</i>	French Catchfly	Exotic	10/12/1985
<i>Silene latifolia subsp. alba</i>	White Champion	Exotic	12/11/2001
<i>Silene nocturna</i>		Exotic	6/07/1968
<i>Spergula arvensis</i>	Corn Spurry	Exotic	31/10/1894
<i>Spergularia bocconeii</i>	Bocconi's Sand-spurrey	Exotic	23/10/1886
<i>Spergularia diandra</i>	Lesser Sand-spurry	Exotic	31/05/1980
<i>Spergularia levis</i>		Exotic	13/03/2008
<i>Spergularia marina</i>	Lesser Sea-spurrey	Native	15/03/1890
<i>Spergularia rubra</i>	Sandspurry	Exotic	12/03/1962

Flora List

Prepared by Cardno for the Department of Planning

Scientific Name	Common Name	Native or Exotic	Last Sited
<i>Spergularia sp. B</i>		Native	8/04/1967
<i>Stellaria flaccida</i>		Native	1/12/1963
<i>Stellaria media</i>	Common Chickweed	Exotic	7/08/2007
<i>Vaccaria hispanica</i>	Cow Soapwort	Exotic	4/11/1967
<i>Allocasuarina diminuta subsp. diminuta</i>		Native	3/08/1985
<i>Allocasuarina diminuta subsp. mimica</i>		Native	19/06/1992
<i>Allocasuarina distyla</i>		Native	5/09/2007
<i>Allocasuarina glareicola</i>		Native	10/09/1996
<i>Allocasuarina littoralis</i>	Black She-Oak	Native	17/09/2008
<i>Allocasuarina torulosa</i>	Forest Oak	Native	17/09/2008
<i>Casuarina cunninghamiana subsp. cunninghamiana</i>	River Oak	Native	21/08/2008
<i>Casuarina glauca</i>	Swamp Oak	Native	1/06/2009
<i>Casuarina spp.</i>		Native	7/01/2004
<i>Celastrus australis</i>	Staff Climber	Native	12/03/1976
<i>Celastrus subspicata</i>	Large-leaved Staff Vine	Native	15/11/1985
<i>Elaeodendron australe</i>		Native	18/05/1992
<i>Elaeodendron australe var. australe</i>		Native	12/03/1976
<i>Maytenus silvestris</i>	Narrow-leaved Orangebark	Native	1/06/2009
<i>Centrolepis fascicularis</i>		Native	4/03/2008
<i>Centrolepis strigosa subsp. strigosa</i>		Native	15/10/1966
<i>Atriplex australasica</i>		Native	12/04/1987
<i>Atriplex leptocarpa</i>	Slender-fruit Saltbush	Native	30/11/1909
<i>Atriplex prostrata</i>		Exotic	4/03/2008
<i>Atriplex semibaccata</i>	Creeping Saltbush	Native	31/07/1897
<i>Chenopodium album</i>	Fat Hen	Exotic	1/06/2009
<i>Chenopodium curvispicatum</i>		Native	27/11/2003
<i>Chenopodium glaucum</i>		Native	31/12/1893
<i>Chenopodium multifidum</i>	Scented Goosefoot	Exotic	23/01/1954
<i>Chenopodium murale</i>	Nettle-leaf Goosefoot	Exotic	19/11/2004
<i>Chenopodium nitrariaceum</i>	Nitre Goosefoot	Native	8/05/2001
<i>Chenopodium pumilio</i>	Small Crumbweed	Native	8/05/2001
<i>Dysphania glomulifera</i>		Native	25/10/2004
<i>Dysphania littoralis</i>		Native	24/02/1970
<i>Einadia hastata</i>	Berry Saltbush	Native	9/07/2009
<i>Einadia nutans</i>	Climbing Saltbush	Native	1/06/2009
<i>Einadia nutans subsp. linifolia</i>	Climbing Saltbush	Native	11/10/1897
<i>Einadia nutans subsp. nutans</i>	Climbing Saltbush	Native	20/03/2009
<i>Einadia polygonoides</i>	Knotweed Goosefoot	Native	1/06/2009
<i>Einadia trigonos</i>	Fishweed	Native	23/07/2009
<i>Einadia trigonos subsp. stellulata</i>		Native	19/03/1968
<i>Einadia trigonos subsp. trigonos</i>		Native	30/07/2008
<i>Maireana microphylla</i>	Small-leaf Bluebush	Native	7/09/1968
<i>Maireana polypterygia</i>		Exotic	8/05/2001
<i>Rhagodia spinescens</i>	Thorny Saltbush	Native	10/01/1968
<i>Rhagodia ulicina</i>		Native	8/05/2001
<i>Salsola kali var. kali</i>	Buckbush	Native	6/04/1968
<i>Salsola tragus subsp. tragus</i>	Buckbush, Soft Rolpoly, Saltwort	Native	17/04/1969
<i>Sarcocornia quinqueflora subsp. quinqueflora</i>		Native	17/09/2008
<i>Sclerolaena muricata var. semiglabra</i>	Black Rolpoly	Native	25/06/1966

Scientific Name	Common Name	Native or Exotic	Last Sited
<i>Sclerolaena muricata</i> var. <i>villosa</i>	Black Rolypoly	Native	5/02/1967
<i>Suaeda australis</i>		Native	31/12/1893
<i>Hypericum gramineum</i>	Small St John's Wort	Native	03/03/1894
<i>Hypericum japonicum</i>		Native	16/07/2009
<i>Hypericum perforatum</i>	St. Johns Wort	Exotic	20/03/2009
<i>Hypericum</i> spp.		Exotic	27/02/2004
<i>Burchardia umbellata</i>	Milkmaids	Native	7/08/2002
<i>Wurmbea dioica</i> subsp. <i>dioica</i>	Early Nancy	Native	23/12/1998
<i>Aneilema acuminatum</i>		Native	20/10/2004
<i>Aneilema biflorum</i>		Native	16/05/1996
<i>Commelina cyanea</i>	Native Wandering Jew	Native	20/03/2009
<i>Tradescantia fluminensis</i>	Wandering Jew	Exotic	20/03/2009
<i>Calystegia marginata</i>		Native	18/06/2003
<i>Calystegia</i> spp.		Exotic	6/06/2008
<i>Convolvulus angustissimus</i> subsp. <i>angustissimus</i>		Native	03/11/1893
<i>Convolvulus arvensis</i>	Field Bindweed	Exotic	14/03/2003
<i>Convolvulus erubescens</i>	Pink Bindweed	Native	30/11/1894
<i>Cuscuta australis</i>	Australian Dodder	Native	2/12/1998
<i>Dichondra repens</i>	Kidney Weed	Native	23/07/2009
<i>Dichondra</i> sp. <i>A</i>	Kidney Weed	Native	16/07/2009
<i>Ipomoea cairica</i>		Exotic	20/03/2009
<i>Ipomoea indica</i>	Morning Glory	Exotic	1/06/2009
<i>Ipomoea purpurea</i>	Common Morning Glory	Exotic	1/06/2009
<i>Ipomoea</i> spp.		Exotic	6/06/2003
<i>Polymeria calycina</i>		Native	01/09/1898
<i>Wilsonia backhousei</i>	Narrow-leafed Wilsonia	Native	18/03/1899
<i>Bryophyllum delagoense</i>	Mother of millions	Exotic	1/06/2009
<i>Bryophyllum pinnatum</i>	Resurrection Plant	Exotic	1/06/2009
<i>Crassula decumbens</i> var. <i>decumbens</i>	Spreading Stonecrop	Native	22/09/1963
<i>Crassula helmsii</i>	Swamp Stonecrop	Native	31/01/1959
<i>Crassula multicava</i>		Exotic	1/06/2009
<i>Crassula ovata</i>	Jade Plant	Exotic	16/05/1966
<i>Crassula peduncularis</i>	Purple Stonecrop	Native	2/11/1963
<i>Crassula sarmentosa</i> var. <i>sarmentosa</i>		Exotic	13/03/2008
<i>Crassula sieberiana</i>	Australian Stonecrop	Native	03/11/1894
<i>Crassula</i> spp.	Stonecrop	Exotic	1/06/2009
<i>Crassula tetragona</i> subsp. <i>robusta</i>		Exotic	1/06/2009
<i>Crassula tetramera</i>		Native	18/06/1966
<i>Sedum praealtum</i>		Exotic	1/11/1970
<i>Citrullus lanatus</i> var. <i>lanatus</i>	Wild Melon, Camel Melon, Bitter	Exotic	1/06/1968
<i>Cucurbita maxima</i>	Ironbark Pumpkin	Exotic	27/04/2004
<i>Cucurbita pepo</i>	field pumpkin	Exotic	16/03/1968
<i>Sicyos australis</i>		Native	12/03/1976
<i>Bauera microphylla</i>		Native	22/09/1888
<i>Bauera rubioides</i>	River Rose	Native	5/09/2007
<i>Callicoma serratifolia</i>	Black Wattle	Native	27/02/2004
<i>Ceratopetalum apetalum</i>	Coachwood	Native	1/03/2002
<i>Ceratopetalum gummiferum</i>	Christmas Bush	Native	30/11/1896
<i>Schizomeria ovata</i>	Crabapple	Native	31/01/1883
<i>Callitris muelleri</i>		Native	27/02/2004

Scientific Name	Common Name	Native or Exotic	Last Sited
<i>Callitris rhomboidea</i>	Port Jackson Pine	Native	03/11/1893
<i>Cupressus sempervirens</i>	Italian Cypress	Exotic	14/11/2005
<i>Cupressus</i> spp.		Exotic	19/11/2004
<i>Cyathea australis</i>	Rough Treefern	Native	27/02/2004
<i>Cyathea cooperi</i>	Straw Treefern	Native	27/02/2004
<i>Baumea acuta</i>		Native	31/10/1893
<i>Baumea articulata</i>	Jointed Twig-rush	Native	22/10/2004
<i>Baumea juncea</i>		Native	23/07/1899
<i>Baumea nuda</i>		Native	18/01/2005
<i>Baumea rubiginosa</i>		Native	20/05/1998
<i>Baumea teretifolia</i>		Native	17/09/1981
<i>Bolboschoenus caldwellii</i>		Native	13/03/2008
<i>Carex appressa</i>	Tall Sedge	Native	1/06/2009
<i>Carex breviculmis</i>		Native	23/07/2009
<i>Carex gaudichaudiana</i>		Native	17/11/1996
<i>Carex inversa</i>	Knob Sedge	Native	23/07/2009
<i>Carex longibrachiata</i>		Native	14/01/2005
<i>Carex pumila</i>		Native	18/12/1997
<i>Carex</i> spp.		Native	6/06/2008
<i>Caustis flexuosa</i>	Curly Wig	Native	24/03/1896
<i>Caustis pentandra</i>	Thick Twist Rush	Native	27/02/2004
<i>Caustis recurvata</i> var. <i>hirsuta</i>		Native	31/10/1896
<i>Chorizandra cymbaria</i>		Native	7/08/2002
<i>Chorizandra sphaerocephala</i>	Roundhead Bristle-sedge	Native	16/02/1983
<i>Cladium procerum</i>		Native	31/12/1893
<i>Cyathochaeta diandra</i>		Native	5/09/2007
<i>Cyperus aggregatus</i>		Exotic	14/03/2008
<i>Cyperus brevifolius</i>		Exotic	20/03/2009
<i>Cyperus congestus</i>		Exotic	26/03/2007
<i>Cyperus difformis</i>	Dirty Dora	Native	25/05/2006
<i>Cyperus enervis</i>		Native	13/03/2008
<i>Cyperus eragrostis</i>	Umbrella Sedge	Exotic	20/03/2009
<i>Cyperus flaccidus</i>	Lax Flat-sedge	Native	29/04/1970
<i>Cyperus fulvus</i>	Sticky Sedge	Native	22/01/1989
<i>Cyperus gracilis</i>	Slender Flat-sedge	Native	16/07/2009
<i>Cyperus gunnii</i> subsp. <i>gunnii</i>		Native	31/10/1894
<i>Cyperus haspan</i> subsp. <i>haspan</i>		Native	20/04/1993
<i>Cyperus imbecillis</i>		Native	22/07/1899
<i>Cyperus laevigatus</i>		Native	30/04/1916
<i>Cyperus laevis</i>		Native	31/01/1898
<i>Cyperus leiocaulon</i>		Native	12/05/1977
<i>Cyperus lucidus</i>	Leafy Flat Sedge	Native	31/10/1894
<i>Cyperus polystachyos</i>		Native	31/12/1894
<i>Cyperus reflexus</i>		Exotic	3/01/1993
<i>Cyperus rotundus</i>	Nutgrass	Exotic	20/03/2009
<i>Cyperus sanguinolentus</i>		Native	7/04/1968
<i>Cyperus sesquiflorus</i>		Exotic	20/03/2009
<i>Cyperus sphaeroideus</i>		Native	20/10/2004
<i>Cyperus</i> spp.		Native	22/10/2004
<i>Cyperus tenellus</i>		Exotic	30/11/1969

Scientific Name	Common Name	Native or Exotic	Last Sited
<i>Cyperus trinervis</i>		Native	18/03/1967
<i>Eleocharis acuta</i>		Native	16/05/2006
<i>Eleocharis atricha</i>		Native	17/05/1992
<i>Eleocharis cylindrostachys</i>		Native	31/10/1885
<i>Eleocharis dietrichiana</i>		Native	5/02/1980
<i>Eleocharis gracilis</i>		Native	30/11/1997
<i>Eleocharis minuta</i>		Exotic	19/04/1991
<i>Eleocharis parvula</i>		Exotic	22/02/1996
<i>Eleocharis pusilla</i>		Native	29/10/1967
<i>Eleocharis sphacelata</i>	Tall Spike Rush	Native	18/01/2005
<i>Eleocharis spp.</i>	Spike-rush, Spike-sedge	Native	5/08/2003
<i>Ficinia nodosa</i>	Knobby Club-rush	Native	27/02/2004
<i>Fimbristylis dichotoma</i>	Common Fringe-sedge	Native	14/07/2009
<i>Fimbristylis velata</i>		Native	1/06/1968
<i>Fuirena ciliaris</i>		Native	17/05/1992
<i>Gahnia aspera</i>	Rough Saw-sedge	Native	4/03/2008
<i>Gahnia clarkei</i>	Tall Saw-sedge	Native	1/03/2002
<i>Gahnia erythrocarpa</i>		Native	5/09/2007
<i>Gahnia melanocarpa</i>	Black Fruit Saw-sedge	Native	4/03/2008
<i>Gahnia sieberiana</i>	Red-fruit Saw-sedge	Native	4/03/2008
<i>Gahnia spp.</i>		Native	17/07/2008
<i>Gahnia subaequiglumis</i>	Bog Saw-sedge	Native	31/12/1895
<i>Isolepis cernua</i>	Nodding Club-rush	Native	22/10/2004
<i>Isolepis gaudichaudiana</i>	Benambra Club-sedge	Native	3/01/1970
<i>Isolepis hookeriana</i>		Native	26/11/1992
<i>Isolepis inundata</i>	Club-rush	Native	7/08/2002
<i>Isolepis producta</i>		Native	22/10/2004
<i>Isolepis prolifera</i>		Exotic	4/03/2008
<i>Isolepis sepulcralis</i>		Exotic	10/09/1992
<i>Lepidosperma concavum</i>		Native	1/08/2003
<i>Lepidosperma filiforme</i>		Native	4/03/2008
<i>Lepidosperma gunnii</i>		Native	10/08/1994
<i>Lepidosperma laterale</i>	Variable Sword-sedge	Native	31/03/1894
<i>Lepidosperma longitudinale</i>	Pithy Sword-sedge	Native	17/05/1992
<i>Lepidosperma neesii</i>		Native	30/05/1986
<i>Lepidosperma quadrangulatum</i>		Native	7/08/2002
<i>Lepidosperma urophorum</i>		Native	16/07/1966
<i>Lepidosperma viscidum</i>		Native	17/07/2008
<i>Lipocarpa microcephala</i>	Button Rush	Native	10/05/1992
<i>Ptilothrix deusta</i>		Native	5/09/2007
<i>Rhynchospora brownii</i>	Grassy Beak-sedge	Native	13/01/1968
<i>Schoenoplectus erectus</i>		Exotic	17/05/1992
<i>Schoenoplectus mucronatus</i>		Native	11/03/1971
<i>Schoenoplectus subulatus</i>		Native	10/05/1977
<i>Schoenoplectus validus</i>		Native	24/01/2005
<i>Schoenus apogon</i>	Fluke Bogrush	Native	03/11/1897
<i>Schoenus brevifolius</i>		Native	5/09/2007
<i>Schoenus ericetorum</i>		Native	30/04/1891
<i>Schoenus imberbis</i>		Native	5/09/2007
<i>Schoenus melanostachys</i>		Native	5/09/2007

Scientific Name	Common Name	Native or Exotic	Last Sited
<i>Schoenus moorei</i>		Native	1/08/2003
<i>Scleria mackaviensis</i>		Native	9/07/2009
<i>Tricostularia pauciflora</i>		Native	27/11/2003
<i>Davallia solida</i> var. <i>pyxidata</i>	Hare's Foot Fern	Native	1/03/2002
<i>Nephrolepis cordifolia</i>	Fishbone Fern	Native	20/03/2009
<i>Dawsonia polytrichoides</i>		Native	27/02/2004
<i>Dennstaedtia davallioides</i>	Lacy Ground Fern	Native	2/05/1942
<i>Histiopteris incisa</i>	Bat's Wing Fern	Native	27/02/2004
<i>Hypolepis muelleri</i>	Harsh Ground Fern	Native	6/06/2003
<i>Pteridium esculentum</i>	Bracken	Native	17/09/2008
<i>Calochlaena dubia</i>	Rainbow Fern	Native	31/03/1894
<i>Hibbertia acicularis</i>		Native	20/01/1894
<i>Hibbertia aspera</i>	Rough Guinea Flower	Native	5/09/2007
<i>Hibbertia bracteata</i>		Native	27/02/2004
<i>Hibbertia circumdans</i>		Native	17/04/1996
<i>Hibbertia cistiflora</i> subsp. <i>cistiflora</i>		Native	27/02/2004
<i>Hibbertia dentata</i>	Twining Guinea Flower	Native	1/10/1966
<i>Hibbertia diffusa</i>	Wedge Guinea Flower	Native	24/11/1893
<i>Hibbertia empetrifolia</i> subsp. <i>empetrifolia</i>		Native	1/08/2003
<i>Hibbertia fasciculata</i>		Native	1/08/2003
<i>Hibbertia hermanniifolia</i>		Native	24/02/1808
<i>Hibbertia linearis</i>		Native	1/03/2002
<i>Hibbertia monogyna</i>		Native	5/09/2007
<i>Hibbertia nitida</i>		Native	4/03/2008
<i>Hibbertia obtusifolia</i>	Hoary guinea flower, Grey Guinea Flower	Native	18/01/2005
<i>Hibbertia pedunculata</i>		Native	4/05/2007
<i>Hibbertia riparia</i>		Native	17/09/2008
<i>Hibbertia scandens</i>	Climbing Guinea Flower	Native	30/11/1892
<i>Hibbertia</i> spp.		Native	30/11/2000
<i>Hibbertia virgata</i> subsp. <i>virgata</i>	Twiggy Guinea Flower	Native	5/09/2007
<i>Doryanthes excelsa</i>	Gynea Lily	Native	20/03/2009
<i>Drosera auriculata</i>		Native	1/08/2003
<i>Drosera binata</i>	Forked Sundew	Native	15/09/1981
<i>Drosera burmanni</i>		Native	10/05/1992
<i>Drosera peltata</i>	A Sundew	Native	5/09/2007
<i>Drosera spatulata</i>		Native	27/02/2004
<i>Cyrtomium falcatum</i> cv. ' <i>Rochfordii</i> '	Holly Fern	Exotic	1/07/1984
<i>Lastreopsis acuminata</i>	Shiny Shield Fern	Native	1/09/1951
<i>Lastreopsis microsora</i> subsp. <i>microsora</i>	Creeping Shield Fern	Native	30/09/1921
<i>Polystichum australiense</i>	Harsh Shield Fern	Native	27/10/1946
<i>Diospyros australis</i>	Black Plum	Native	28/05/1996
<i>Elaeocarpus reticulatus</i>	Blueberry Ash	Native	20/03/2009
<i>Tetratheca ericifolia</i>		Native	27/02/2004
<i>Tetratheca glandulosa</i>		Native	1/08/2003
<i>Tetratheca neglecta</i>		Native	31/08/1888
<i>Tetratheca shiressii</i>		Native	15/09/1981
<i>Elatine gratioloides</i>	Waterwort	Native	24/01/2005
<i>Acrotriche divaricata</i>		Native	1/03/2002
<i>Astroloma humifusum</i>	Native Cranberry	Native	5/09/2007
<i>Astroloma pinifolium</i>	Pine Heath	Native	21/06/1997

Scientific Name	Common Name	Native or Exotic	Last Sited
<i>Brachyloma daphnoides</i>	Daphne Heath	Native	17/09/2008
<i>Brachyloma daphnoides</i> subsp. <i>daphnoides</i>		Native	15/08/1997
<i>Dracophyllum secundum</i>		Native	1/03/2002
<i>Epacris calvertiana</i> var. <i>calvertiana</i>		Native	31/10/1897
<i>Epacris calvertiana</i> var. <i>versicolor</i>		Native	30/09/1897
<i>Epacris crassifolia</i>		Native	27/02/2004
<i>Epacris longiflora</i>	Fuchsia Heath	Native	5/09/2007
<i>Epacris microphylla</i>	Coral Heath	Native	31/10/1889
<i>Epacris obtusifolia</i>	Blunt-leaf Heath	Native	30/09/1964
<i>Epacris paludosa</i>	Swamp Heath	Native	4/03/2008
<i>Epacris pulchella</i>	Wallum Heath	Native	17/09/2008
<i>Epacris purpurascens</i>		Native	31/07/1915
<i>Epacris purpurascens</i> var. <i>purpurascens</i>		Native	5/09/1965
<i>Epacris reclinata</i>	Fuchsia Heath	Native	19/08/1989
<i>Leucopogon amplexicaulis</i>	Beard-heath	Native	4/03/2008
<i>Leucopogon ericoides</i>	Pink Beard-heath	Native	5/09/2007
<i>Leucopogon esquamatus</i>		Native	01/08/1888
<i>Leucopogon exolasius</i>	Woronora Beard-heath	Native	30/11/2000
<i>Leucopogon fletcheri</i> subsp. <i>fletcheri</i>		Native	16/09/1989
<i>Leucopogon juniperinus</i>	Prickly Beard-heath	Native	31/07/1896
<i>Leucopogon lanceolatus</i>		Native	17/07/2008
<i>Leucopogon lanceolatus</i> subsp. <i>group F</i>		Native	31/08/1965
<i>Leucopogon lanceolatus</i> var. <i>lanceolatus</i>		Native	5/09/2007
<i>Leucopogon microphyllus</i>		Native	5/09/2007
<i>Leucopogon muticus</i>	Blunt Beard-heath	Native	17/09/2008
<i>Leucopogon setiger</i>		Native	22/09/1889
<i>Leucopogon</i> spp.	A Beard-heath	Native	18/01/2005
<i>Leucopogon virgatus</i>		Native	7/08/2002
<i>Lissanthe sapida</i>	Native Cranberry	Native	30/06/1883
<i>Lissanthe strigosa</i>	Peach Heath	Native	5/09/2007
<i>Lissanthe strigosa</i> subsp. <i>strigosa</i>		Native	16/05/2006
<i>Lissanthe strigosa</i> subsp. <i>subulata</i>	Peach Heath	Native	4/05/2007
<i>Melichrus procumbens</i>	Jam Tarts	Native	7/08/2002
<i>Monotoca elliptica</i>	Tree Broom-heath	Native	5/09/2007
<i>Monotoca ledifolia</i>		Native	31/01/1894
<i>Monotoca scoparia</i>		Native	20/10/2004
<i>Rupicola apiculata</i>		Native	30/09/1897
<i>Sprengelia incarnata</i>	Pink Swamp Heath	Native	5/09/2007
<i>Sprengelia monticola</i>		Native	31/03/1897
<i>Styphelia angustifolia</i>		Native	16/12/2000
<i>Styphelia laeta</i> subsp. <i>laeta</i>		Native	30/09/2001
<i>Styphelia triflora</i>	Pink Five-Corners	Native	5/09/2007
<i>Styphelia tubiflora</i>	Red Five-Corner	Native	27/02/2004
<i>Trochocarpa laurina</i>	Tree Heath	Native	1/03/2002
<i>Woolisia pungens</i>		Native	5/09/2007
<i>Eriocaulon scariosum</i>		Native	31/12/1894
<i>Abrophyllum ornans</i>	Native Hydrangea	Native	29/06/1935
<i>Acalypha australis</i>		Exotic	28/04/1995
<i>Alchomea ilicifolia</i>	Native Holly	Native	12/03/1976
<i>Amperea xiphoclada</i>		Native	1/03/2002

Scientific Name	Common Name	Native or Exotic	Last Sited
<i>Amperea xiphioclada</i> var. <i>xiphioclada</i>		Native	20/04/2001
<i>Bertya pomaderroides</i>		Native	4/03/2008
<i>Beyeria viscosa</i>	Sticky Wallaby Bush	Native	18/11/1991
<i>Chamaesyce dallachyana</i>		Native	20/03/2009
<i>Chamaesyce drummondii</i>	Caustic Weed	Native	13/03/2008
<i>Chamaesyce hyssopifolia</i>		Exotic	28/02/1917
<i>Chamaesyce maculata</i>		Exotic	20/03/2009
<i>Chamaesyce prostrata</i>	Red Caustic Weed	Exotic	19/11/2004
<i>Claoxylon australe</i>	Brittlewood	Native	30/11/1933
<i>Croton verreauxii</i>	Green Native Cascarilla	Native	28/05/1991
<i>Euphorbia helioscopia</i>	Sun Spurge	Exotic	20/10/2004
<i>Euphorbia maconochieana</i>		Native	18/11/1992
<i>Euphorbia pepus</i>	Petty Spurge	Exotic	1/06/2009
<i>Euphorbia</i> spp.		Exotic	7/01/2004
<i>Homalanthus populifolius</i>		Native	27/02/2004
<i>Homalanthus stillingiifolius</i>		Native	15/04/1968
<i>Manihot grahamii</i>		Exotic	2/02/1985
<i>Micrantheum ericoides</i>		Native	31/01/1896
<i>Micrantheum hexandrum</i>		Native	31/08/1896
<i>Pseudanthus pimeleoides</i>		Native	6/09/1983
<i>Ricinocarpos pinifolius</i>	Wedding Bush	Native	17/09/2008
<i>Ricinus communis</i>	Castor Oil Plant	Exotic	20/03/2009
<i>Triadica sebifera</i>	Chinese Tallowood	Exotic	20/03/2009
<i>Ceratonia siliqua</i>	Carob	Exotic	14/11/2005
<i>Gleditsia triacanthos</i>	Honey Locust	Exotic	21/08/2008
<i>Senna barclayana</i>	Smooth Senna	Native	17/05/1969
<i>Senna clavigera</i>		Native	21/05/1996
<i>Senna didymobotrya</i>		Exotic	4/02/1967
<i>Senna odorata</i>		Native	4/03/2008
<i>Senna pendula</i> var. <i>glabrata</i>		Exotic	1/06/2009
<i>Senna septemtrionalis</i>	Arsenic Bush	Exotic	29/04/1967
<i>Senna</i> spp.		Exotic	2/10/2002
<i>Almaleea incurvata</i>		Native	31/08/1884
<i>Aotus ericoides</i>		Native	4/03/2008
<i>Bossiaea buxifolia</i>		Native	1/12/1998
<i>Bossiaea ensata</i>	Sword Bossiaea	Native	22/09/1887
<i>Bossiaea heterophylla</i>	Variable Bossiaea	Native	5/09/2007
<i>Bossiaea obcordata</i>	Spiny Bossiaea	Native	30/06/1913
<i>Bossiaea prostrata</i>		Native	11/09/1842
<i>Bossiaea rhombifolia</i> subsp. <i>rhombifolia</i>		Native	4/03/2008
<i>Bossiaea scolopendria</i>		Native	5/09/2007
<i>Bossiaea stephensonii</i>		Native	30/04/1890
<i>Castanospermum australe</i>	Black Bean	Native	2/07/1998
<i>Chorizema parviflorum</i>	Eastern Flame Pea	Native	4/05/2007
<i>Crotalaria</i> spp.		Exotic	5/09/2007
<i>Daviesia acicularis</i>		Native	18/01/2005
<i>Daviesia alata</i>		Native	6/09/1964
<i>Daviesia corymbosa</i>		Native	30/09/1888
<i>Daviesia genistifolia</i>	Broom Bitter Pea	Native	13/03/2008
<i>Daviesia latifolia</i>	Bitter-pea	Native	19/02/1967

Scientific Name	Common Name	Native or Exotic	Last Sited
<i>Daviesia mimosoides</i> subsp. <i>mimosoides</i>		Native	18/10/1969
<i>Daviesia squarrosa</i>		Native	4/11/1966
<i>Daviesia ulicifolia</i>	Gorse Bitter Pea	Native	4/05/2007
<i>Daviesia ulicifolia</i> subsp. <i>ulicifolia</i>		Native	13/03/2008
<i>Desmodium brachypodium</i>	Large Tick-trefoil	Native	28/02/1895
<i>Desmodium gunnii</i>	Slender Tick-trefoil	Native	25/10/2004
<i>Desmodium rhytidophyllum</i>		Native	13/03/2008
<i>Desmodium</i> spp.	Tick-trefoil	Native	17/01/2008
<i>Desmodium varians</i>	Slender Tick-trefoil	Native	23/07/2009
<i>Dillwynia elegans</i>		Native	5/09/2007
<i>Dillwynia ericifolia</i>		Native	16/09/1945
<i>Dillwynia floribunda</i>		Native	7/08/2007
<i>Dillwynia glaberrima</i>		Native	19/12/2003
<i>Dillwynia parvifolia</i>		Native	16/09/1804
<i>Dillwynia retorta</i>		Native	5/09/2007
<i>Dillwynia rudis</i>		Native	4/11/1966
<i>Dillwynia sericea</i>	Egg and Bacon Peas, Parrot Peas	Native	22/08/1993
<i>Dillwynia sieberi</i>		Native	23/07/2009
<i>Dillwynia tenuifolia</i>	Dillwynia tenuifolia, Kemps Creek	Native	5/09/2006
<i>Dipogon lignosus</i>	Dolichos Pea	Exotic	17/09/2008
<i>Erythrina sykesii</i>	Coral Tree	Exotic	14/11/2005
<i>Genista linifolia</i>	Flaxleaf Broom	Exotic	4/03/2008
<i>Genista monspessulana</i>	Montpellier Broom	Exotic	5/09/2007
<i>Genista</i> spp.		Exotic	22/10/2004
<i>Glycine clandestina</i>	Twining glycine	Native	9/07/2009
<i>Glycine microphylla</i>	Small-leaf Glycine	Native	31/01/1896
<i>Glycine</i> spp.		Native	4/05/2007
<i>Glycine tabacina</i>	Variable Glycine	Native	23/07/2009
<i>Glycine tabacina</i> subsp. 'B'		Native	17/12/1985
<i>Glycine tomentella</i>	Woolly Glycine	Native	28/05/1996
<i>Gompholobium glabratum</i>	Dainty Wedge Pea	Native	17/09/2008
<i>Gompholobium grandiflorum</i>	Large Wedge Pea	Native	27/02/2004
<i>Gompholobium huegelii</i>	Pale Wedge Pea	Native	30/11/1893
<i>Gompholobium inconspicuum</i>		Native	7/08/2002
<i>Gompholobium latifolium</i>	Golden Glory Pea	Native	1/03/2002
<i>Gompholobium minus</i>	Dwarf Wedge Pea	Native	31/10/1893
<i>Gompholobium</i> spp.		Native	18/01/2005
<i>Goodia lotifolia</i> var. <i>lotifolia</i>		Native	30/09/1893
<i>Hardenbergia violacea</i>	False Sarsaparilla	Native	20/03/2009
<i>Hovea heterophylla</i>		Native	13/09/1965
<i>Hovea linearis</i>		Native	31/10/1886
<i>Hovea longifolia</i>	Rusty Pods	Native	31/12/1896
<i>Hovea pannosa</i>		Native	1/10/1966
<i>Hovea purpurea</i>		Native	14/09/1966
<i>Hovea speciosa</i>		Native	31/10/1894
<i>Hovea</i> spp.		Native	17/07/2008
<i>Indigofera australis</i>	Australian Indigo	Native	1/06/2009
<i>Jacksonia scoparia</i>	Dogwood	Native	30/11/1899
<i>Kennedia prostrata</i>	Running Postman	Native	04/09/1886
<i>Kennedia rubicunda</i>	Dusky Coral Pea	Native	17/07/2008

Scientific Name	Common Name	Native or Exotic	Last Sited
<i>Lathyrus latifolius</i>	Perennial Pea	Exotic	12/01/1966
<i>Lathyrus tingitanus</i>		Exotic	4/11/1967
<i>Lespedeza juncea subsp. sericea</i>		Native	1/04/1996
<i>Lotus angustissimus</i>	Slender Birds-foot Trefoil	Exotic	23/07/2009
<i>Lotus australis</i>	Australian Trefoil	Native	11/11/2004
<i>Lotus corniculatus</i>	Birds-foot Trefoil	Exotic	20/10/2004
<i>Lotus subbiflorus</i>	Hairy Birds-foot Trefoil	Exotic	19/11/2004
<i>Lotus uliginosus</i>	Birds-foot Trefoil	Exotic	1/06/2009
<i>Lupinus angustifolius</i>	Narrow-leaved Lupin	Exotic	11/09/1944
<i>Lupinus cosentinii</i>	Sandplain Lupin	Exotic	17/09/2008
<i>Medicago arabica</i>	Spotted Burr Medic	Exotic	15/11/2006
<i>Medicago intertexta</i>	Calvary Medic	Exotic	30/11/1903
<i>Medicago laciniata var. laciniata</i>		Exotic	3/09/1968
<i>Medicago lupulina</i>	Black Medic	Exotic	4/03/2008
<i>Medicago minima</i>	Woolly Burr Medic	Exotic	20/03/2009
<i>Medicago polymorpha</i>	Burr Medic	Exotic	1/06/2009
<i>Medicago sativa</i>	Lucerne	Exotic	13/03/2008
<i>Medicago spp.</i>	A Medic	Exotic	20/03/2009
<i>Medicago truncatula</i>	Barrel Medic	Exotic	25/10/2004
<i>Melilotus indicus</i>	Hexham Scent	Exotic	19/11/2004
<i>Melilotus spp.</i>		Exotic	24/01/2005
<i>Mirbelia rubiifolia</i>	Heathy Mirbelia	Native	30/11/1899
<i>Mirbelia speciosa</i>		Native	5/09/2007
<i>Mirbelia speciosa subsp. speciosa</i>		Native	13/08/1814
<i>Oxylobium arborescens</i>	Tall Shaggy Pea	Native	20/11/1909
<i>Phyllota grandiflora</i>	Heath Phyllota	Native	4/03/2008
<i>Phyllota phyllicoides</i>	Heath Phyllota	Native	31/08/1897
<i>Phyllota squarrosa</i>	Dense Phyllota	Native	5/09/2007
<i>Pisum sativum var. arvense</i>	Field Pea	Exotic	31/10/1967
<i>Platylobium formosum</i>		Native	1/03/2002
<i>Podolobium ilicifolium</i>	Prickly Shaggy Pea	Native	30/09/1897
<i>Podolobium scandens</i>	Netted Shaggy Pea	Native	11/02/1843
<i>Psoralea pinnata</i>	African Scurf-pea	Exotic	5/09/2007
<i>Pultenaea blakelyi</i>		Native	31/10/1897
<i>Pultenaea daphnoides</i>	Large-leaf Bush-pea	Native	17/07/2008
<i>Pultenaea ferruginea</i>		Native	1/03/2002
<i>Pultenaea flexilis</i>		Native	4/03/2008
<i>Pultenaea linophylla</i>		Native	30/09/1888
<i>Pultenaea microphylla</i>	A Bush Pea	Native	7/12/2005
<i>Pultenaea mollis</i>		Native	27/02/2004
<i>Pultenaea paleacea</i>		Native	25/09/1988
<i>Pultenaea parviflora</i>		Native	4/09/2006
<i>Pultenaea pedunculata</i>	Matted Bush-pea	Native	24/01/2005
<i>Pultenaea polifolia</i>	Dusky Bush-pea	Native	31/07/1920
<i>Pultenaea retusa</i>		Native	4/03/2008
<i>Pultenaea scabra</i>		Native	31/10/1886
<i>Pultenaea spinosa</i>	A Bush Pea	Native	30/11/1904
<i>Pultenaea spp.</i>		Native	7/01/2004
<i>Pultenaea stipularis</i>		Native	5/09/2007
<i>Pultenaea tuberculata</i>		Native	30/11/1899

Scientific Name	Common Name	Native or Exotic	Last Sited
<i>Pultenaea villosa</i>	Hairy Bush-pea	Native	4/03/2008
<i>Robinia pseudoacacia</i>	Black Locust	Exotic	13/03/2008
<i>Sphaerolobium minus</i>		Native	31/07/1893
<i>Swainsona monticola</i>		Native	11/09/1965
<i>Tephrosia grandiflora</i>		Exotic	16/10/1989
<i>Trifolium alexandrinum</i> var. <i>serotinum</i>		Exotic	31/10/1941
<i>Trifolium angustifolium</i>	Narrow-leaved Clover	Exotic	20/10/2004
<i>Trifolium arvense</i>	Haresfoot Clover	Exotic	27/11/2003
<i>Trifolium campestre</i>	Hop Clover	Exotic	20/10/2004
<i>Trifolium cernuum</i>	Drooping-flowered Clover	Exotic	28/09/1968
<i>Trifolium dubium</i>	Yellow Suckling Clover	Exotic	13/01/2004
<i>Trifolium fragiferum</i>	Strawberry Clover	Exotic	13/03/2008
<i>Trifolium glomeratum</i>	Clustered Clover	Exotic	25/10/2004
<i>Trifolium incarnatum</i>	Crimson Clover	Exotic	29/09/1965
<i>Trifolium pratense</i>	Red Clover	Exotic	17/01/2008
<i>Trifolium repens</i>	White Clover	Exotic	9/07/2009
<i>Trifolium resupinatum</i>	Shaftal Clover	Exotic	5/05/2002
<i>Trifolium</i> spp.	A Clover	Exotic	7/08/2007
<i>Trifolium striatum</i>	Knotted Clover	Exotic	4/11/1967
<i>Trifolium suffocatum</i>	Suffocated Clover	Exotic	28/12/1968
<i>Trifolium tomentosum</i>	Woolly Clover	Exotic	18/10/1966
<i>Ulex europaeus</i>	Gorse	Exotic	25/08/1966
<i>Vicia hirsuta</i>	Hairy Vetch	Exotic	19/11/2004
<i>Vicia sativa</i>	Common vetch	Exotic	23/07/2009
<i>Vicia sativa</i> subsp. <i>nigra</i>	Narrow-leaved Vetch	Exotic	31/10/1893
<i>Vicia sativa</i> subsp. <i>sativa</i>	Common Vetch	Exotic	29/09/2004
<i>Vicia</i> spp.	Vetch	Exotic	20/03/2009
<i>Vicia tetrasperma</i>	Slender Vetch	Exotic	20/03/2009
<i>Vicia villosa</i> subsp. <i>eriocarpa</i>		Exotic	31/12/1908
<i>Vicia villosa</i> subsp. <i>villosa</i>		Exotic	30/11/1898
<i>Viminaria juncea</i>	Native Broom	Native	18/01/2005
<i>Wisteria sinensis</i>	Chinese wisteria	Exotic	14/11/2005
<i>Zornia dyctiocarpa</i> var. <i>dyctiocarpa</i>	Zornia	Native	14/07/2009
<i>Acacia baileyana</i>	Cootamundra Wattle	Native	14/03/2008
<i>Acacia binervata</i>	Two-veined Hickory	Native	17/07/2008
<i>Acacia binervia</i>	Coast Myall	Native	31/10/1885
<i>Acacia brownii</i>	Heath Wattle	Native	5/09/2007
<i>Acacia buxifolia</i> subsp. <i>buxifolia</i>	Box-leaved Wattle	Native	15/08/1964
<i>Acacia bynoeana</i>	Bynoe's Wattle	Native	30/09/1913
<i>Acacia cremiflora</i>		Native	31/10/1895
<i>Acacia dealbata</i>	Silver Wattle	Native	17/07/2008
<i>Acacia decurrens</i>	Black Wattle	Native	31/08/1896
<i>Acacia echinula</i>	Hedgehog Wattle	Native	4/03/2008
<i>Acacia elata</i>	Mountain Cedar Wattle	Native	20/03/2009
<i>Acacia elongata</i>	Swamp Wattle	Native	30/09/1897
<i>Acacia falcata</i>		Native	30/06/1897
<i>Acacia falciformis</i>	Broad-leaved Hickory	Native	26/03/2007
<i>Acacia fimbriata</i>	Fringed Wattle	Native	1/06/2009
<i>Acacia floribunda</i>	White Sally	Native	30/11/1897
<i>Acacia hispidula</i>		Native	31/05/1893

Scientific Name	Common Name	Native or Exotic	Last Sited
<i>Acacia implexa</i>	Hickory Wattle	Native	9/07/2009
<i>Acacia irrorata</i>	Green Wattle	Native	5/09/2007
<i>Acacia linifolia</i>	White Wattle	Native	05/03/1887
<i>Acacia longifolia</i>		Native	30/09/1846
<i>Acacia longifolia</i> subsp. <i>longifolia</i>	Sydney Golden Wattle	Native	15/08/1896
<i>Acacia longifolia</i> subsp. <i>sophorae</i>	Coastal Wattle	Native	17/09/2008
<i>Acacia longissima</i>	Long-leaf Wattle	Native	17/07/2008
<i>Acacia maidenii</i>	Maiden's Wattle	Native	2/10/2002
<i>Acacia mearnsii</i>	Black Wattle	Native	17/09/2008
<i>Acacia melanoxylon</i>	Blackwood	Native	4/03/2008
<i>Acacia myrtifolia</i>	Red-stemmed Wattle	Native	30/11/1895
<i>Acacia obtusifolia</i>		Native	30/09/1848
<i>Acacia oxycedrus</i>	Spike Wattle	Native	27/02/2004
<i>Acacia paradoxa</i>	Kangaroo Thorn	Native	4/03/2008
<i>Acacia parramattensis</i>	Parramatta Wattle	Native	31/12/1896
<i>Acacia parvipinnula</i>	Silver-stemmed Wattle	Native	31/10/1880
<i>Acacia podalyriifolia</i>	Queensland Silver Wattle	Native	1/06/2009
<i>Acacia prominens</i>	Gosford Wattle	Native	31/07/1898
<i>Acacia pubescens</i>	Downy Wattle	Native	31/10/1886
<i>Acacia saligna</i>	Golden Wreath Wattle	Exotic	20/03/2009
<i>Acacia schinoides</i>	Green Cedar Wattle	Native	13/01/2004
<i>Acacia spectabilis</i>	Mudgee Wattle	Native	24/01/2005
<i>Acacia</i> spp.	Wattle	Native	15/11/2006
<i>Acacia stricta</i>	Straight Wattle	Native	1/08/2003
<i>Acacia suaveolens</i>	Sweet Wattle	Native	27/05/1895
<i>Acacia subtilinervis</i>	Net-veined wattle	Native	17/07/2008
<i>Acacia terminalis</i>	Sunshine Wattle	Native	17/07/2008
<i>Acacia terminalis</i> subsp. <i>angustifolia</i>		Native	17/09/2008
<i>Acacia terminalis</i> subsp. <i>longiaxialis</i>		Native	30/04/1895
<i>Acacia ulicifolia</i>	Prickly Moses	Native	30/09/1886
<i>Acacia vestita</i>	Weeping Boree	Native	31/08/1894
<i>Paraserianthes lophantha</i> subsp. <i>lophantha</i>	Crested Wattle	Exotic	5/09/2007
<i>Quercus robur</i>	English Oak	Exotic	20/03/2009
<i>Quercus</i> spp.		Exotic	15/11/2006
<i>Scolopia braunii</i>	Flintwood	Native	31/12/1899
<i>Fumaria bastardii</i>	Bastards Fumitory	Exotic	7/08/2007
<i>Fumaria capreolata</i> subsp. <i>capreolata</i>	Climbing Fumitory	Exotic	15/10/1967
<i>Fumaria muralis</i> subsp. <i>muralis</i>	Wall Fumitory	Exotic	19/11/2004
<i>Fumaria</i> spp.	Fumitory	Exotic	6/06/2008
<i>Centaurium erythraea</i>	Common Centaury	Exotic	13/03/2008
<i>Centaurium tenuiflorum</i>	Branched Centaury, Slender centaury	Exotic	1/06/2009
<i>Schenkia spicata</i>	Spike Centaury	Native	14/03/2008
<i>Sebaea ovata</i>	Yellow Centaury	Native	31/10/1949
<i>Erodium cicutarium</i>	Common Crowfoot	Exotic	2/08/1988
<i>Erodium crinitum</i>	Blue Crowfoot	Native	25/10/2004
<i>Erodium moschatum</i>	Musky Crowfoot	Exotic	20/10/1964
<i>Geranium homeanum</i>		Native	17/09/2008
<i>Geranium molle</i> subsp. <i>molle</i>	Cranesbill Geranium	Exotic	9/07/2009
<i>Geranium obtusisepalum</i>		Native	1/01/1996
<i>Geranium sessiliflorum</i> subsp. <i>brevicaule</i>		Native	15/02/1989

Scientific Name	Common Name	Native or Exotic	Last Sited
<i>Geranium solanderi</i>	Native Geranium	Native	16/11/1893
<i>Geranium solanderi</i> var. <i>solanderi</i>		Native	13/03/2008
<i>Geranium</i> sp. <i>C</i>		Native	27/05/1987
<i>Geranium</i> spp.		Exotic	1/06/2009
<i>Pelargonium australe</i>	Native Storksbill	Native	20/03/2009
<i>Pelargonium capitatum</i>		Exotic	17/09/2008
<i>Pelargonium domesticum</i>	Pelargonium	Exotic	15/11/2006
<i>Pelargonium inodorum</i>		Native	2/12/1998
<i>Dicranopteris linearis</i> var. <i>linearis</i>		Native	27/02/2004
<i>Gleichenia dicarpa</i>	Pouched Coral Fern	Native	5/09/2007
<i>Gleichenia microphylla</i>	Scrambling Coral Fern	Native	4/03/2008
<i>Gleichenia rupestris</i>		Native	4/03/2008
<i>Sticherus flabellatus</i> var. <i>flabellatus</i>	Umbrella Fern	Native	30/06/1889
<i>Dampiera purpurea</i>		Native	30/09/1891
<i>Dampiera stricta</i>		Native	22/09/1888
<i>Goodenia bellidifolia</i>		Native	1/08/2003
<i>Goodenia bellidifolia</i> subsp. <i>bellidifolia</i>		Native	14/01/2005
<i>Goodenia decurrens</i>		Native	11/01/1953
<i>Goodenia hederacea</i>	Ivy Goodenia	Native	1/06/2009
<i>Goodenia hederacea</i> subsp. <i>hederacea</i>		Native	13/03/2008
<i>Goodenia heterophylla</i>		Native	1/03/2002
<i>Goodenia heterophylla</i> subsp. <i>eglandulosa</i>		Native	20/10/2004
<i>Goodenia ovata</i>	Hop Goodenia	Native	6/06/2008
<i>Goodenia paniculata</i>		Native	4/05/2007
<i>Scaevola albida</i>	Pale Fan-flower	Native	31/03/1894
<i>Scaevola albida</i> var. <i>albida</i>		Native	6/06/2008
<i>Scaevola albida</i> var. <i>pallida</i>		Native	3/03/1994
<i>Scaevola ramosissima</i>	Purple Fan-flower	Native	20/10/2004
<i>Grammitis stenophylla</i>	Narrow-leaf Finger Fern	Native	1/03/2002
<i>Gyrostemon thesioides</i>		Native	8/12/1967
<i>Haemodorum corymbosum</i>		Native	4/12/1970
<i>Haemodorum planifolium</i> subsp. <i>planifolium</i>		Native	19/11/1966
<i>Gonocarpus humilis</i>		Native	21/11/1998
<i>Gonocarpus longifolius</i>		Native	4/12/1998
<i>Gonocarpus micranthus</i>		Native	18/01/2005
<i>Gonocarpus micranthus</i> subsp. <i>ramosissimus</i>		Native	24/02/1970
<i>Gonocarpus tetragynus</i>	Poverty Raspwort	Native	7/08/2002
<i>Gonocarpus teucrioides</i>	Germander Raspwort	Native	17/09/2008
<i>Haloragis aspera</i>	Rough Raspwort	Native	30/11/1969
<i>Haloragis heterophylla</i>	Variable Raspwort	Native	26/11/1998
<i>Myriophyllum aquaticum</i>	Parrots Feather	Exotic	30/07/2008
<i>Myriophyllum simulans</i>		Native	25/01/1970
<i>Myriophyllum variifolium</i>		Native	4/03/2008
<i>Liquidambar styraciflua</i>	Sweetgum	Exotic	17/09/2008
<i>Egeria densa</i>	Dense Waterweed	Exotic	11/01/1964
<i>Elodea canadensis</i>	Elodea	Exotic	30/11/1994
<i>Hydrilla verticillata</i>	Hydrilla	Native	27/02/1981
<i>Ottelia ovalifolia</i> subsp. <i>ovalifolia</i>	Swamp Lily	Native	7/04/2003
<i>Vallisneria gigantea</i>	Eelweed	Native	21/08/2008
<i>Hymenophyllum cupressiforme</i>	Common Filmy Fern	Native	1/03/2002

Scientific Name	Common Name	Native or Exotic	Last Sited
<i>Hypoxis hygrometrica</i>	Golden Weather-grass	Native	28/01/2004
<i>Hypoxis hygrometrica</i> var. <i>hygrometrica</i>		Native	13/03/2008
<i>Hypoxis hygrometrica</i> var. <i>villosisepala</i>		Native	23/12/1998
<i>Chasmanthe floribunda</i>	African Cornflag	Exotic	1/06/2009
<i>Crocasmia x crocosmiiflora</i>	Montbretia	Exotic	20/10/2004
<i>Freesia hybrid</i>	Freesia	Exotic	17/09/2008
<i>Herbertia lahue</i> subsp. <i>caerulea</i>		Exotic	26/11/1998
<i>Iris germanica</i>	Tall Bearded Iris	Exotic	25/09/1965
<i>Iris</i> spp.		Exotic	14/03/2003
<i>Ixia flexuosa</i>	Corn Lily	Exotic	3/12/1966
<i>Moraea collina</i>		Exotic	31/08/1923
<i>Patersonia glabrata</i>	Leafy Purple-flag	Native	1/08/2003
<i>Patersonia longifolia</i>		Native	27/02/2004
<i>Patersonia sericea</i>	Silky Purple-Flag	Native	17/09/2008
<i>Patersonia</i> spp.		Native	22/12/2003
<i>Romulea rosea</i> var. <i>australis</i>	Onion Grass	Exotic	1/06/2009
<i>Sisyrinchium iridifolium</i>	Blue Pigroot	Exotic	1/06/2009
<i>Sisyrinchium</i> sp. <i>A</i>	Scourweed	Exotic	25/10/2004
<i>Tritonia lineata</i>	Lined Tritonia	Exotic	23/10/1965
<i>Watsonia meriana</i>		Exotic	17/09/2008
<i>Watsonia</i> spp.		Exotic	6/06/2003
<i>Juncus acuminatus</i>		Exotic	4/12/1998
<i>Juncus acutus</i> subsp. <i>acutus</i>	Sharp Rush	Exotic	17/01/2008
<i>Juncus amabilis</i>		Native	5/12/1993
<i>Juncus aridicola</i>	Tussock Rush	Native	3/10/1988
<i>Juncus articulatus</i>	A Rush	Exotic	27/11/2003
<i>Juncus bufonius</i>	Toad Rush	Exotic	1/06/2009
<i>Juncus caespiticus</i>		Native	31/01/1912
<i>Juncus capillaceus</i>		Exotic	18/03/1975
<i>Juncus capitatus</i>		Exotic	2/11/1963
<i>Juncus cognatus</i>		Exotic	7/08/2007
<i>Juncus continuus</i>		Native	17/09/2008
<i>Juncus effusus</i>		Exotic	26/12/1991
<i>Juncus flavidus</i>		Native	26/01/1991
<i>Juncus fockei</i>		Native	2/12/1998
<i>Juncus holoschoenus</i>		Native	21/11/1892
<i>Juncus homalocaulis</i>		Native	25/11/1998
<i>Juncus kraussii</i> subsp. <i>australiensis</i>	Sea Rush	Native	17/09/2008
<i>Juncus microcephalus</i>		Exotic	10/11/1995
<i>Juncus mollis</i>		Native	12/02/1975
<i>Juncus ochrocoleus</i>		Native	22/05/1994
<i>Juncus pallidus</i>		Native	26/01/1899
<i>Juncus planifolius</i>		Native	13/01/2004
<i>Juncus polyanthemus</i>		Native	18/02/1999
<i>Juncus prismatocarpus</i>		Native	18/01/2005
<i>Juncus remotiflorus</i>		Native	23/12/1998
<i>Juncus</i> spp.	A Rush	Native	6/06/2008
<i>Juncus subglaucus</i>	Rush	Native	7/09/1995
<i>Juncus subsecundus</i>	Finger Rush	Native	20/03/2009
<i>Juncus usitatus</i>		Native	20/03/2009

Scientific Name	Common Name	Native or Exotic	Last Sited
<i>Juncus vaginatus</i>		Native	30/09/1893
<i>Luzula densiflora</i>	Woodrush	Native	2/10/1967
<i>Luzula flaccida</i>	Woodrush	Native	17/11/1991
<i>Triglochin microtuberosa</i>		Native	30/07/2008
<i>Triglochin procera</i>	Water Ribbons	Native	20/10/2004
<i>Triglochin rheophila</i>		Native	18/11/1968
<i>Triglochin striata</i>	Streaked Arrowgrass	Native	17/01/2008
<i>Ajuga australis</i>	Austral Bugle	Native	9/07/2009
<i>Chloanthes stoechadis</i>		Native	29/07/1989
<i>Clerodendrum tomentosum</i>	Hairy Clerodendrum	Native	25/11/1892
<i>Clerodendrum tomentosum var. tomentosum</i>		Native	12/08/1994
<i>Glechoma hederacea</i>	Ground Ivy	Exotic	26/10/1976
<i>Hemigenia cuneifolia</i>		Native	31/12/1910
<i>Hemigenia purpurea</i>		Native	5/09/2007
<i>Lamium amplexicaule</i>	Dead Nettle	Exotic	25/08/1966
<i>Lamium purpureum</i>	Red Deadnettle	Exotic	1/06/2009
<i>Lavandula spp.</i>		Exotic	14/04/2004
<i>Lavandula stoechas</i>	Italian Lavender	Exotic	26/03/1967
<i>Lycopus australis</i>	Australian Gipsywort	Native	5/06/1996
<i>Marrubium vulgare</i>	White Horehound	Exotic	15/11/1985
<i>Mentha diemenica</i>	Slender Mint	Native	13/03/2008
<i>Mentha saturoioides</i>	Native Pennyroyal	Native	13/03/2008
<i>Mentha spp.</i>		Exotic	25/10/2004
<i>Mentha x piperita</i>	Peppermint	Exotic	11/04/1971
<i>Mentha x spicata</i>	Spearmint	Exotic	16/02/1969
<i>Plectranthus ciliatus</i>		Exotic	17/09/2008
<i>Plectranthus parviflorus</i>		Native	16/07/2009
<i>Plectranthus spp.</i>		Native	1/06/2009
<i>Prostanthera caerulea</i>		Native	19/08/1989
<i>Prostanthera howelliae</i>	Prostanthera	Native	21/09/1952
<i>Prostanthera incisa</i>	Cut-leaved Mint-bush	Native	1/03/2002
<i>Prostanthera linearis</i>	Narrow-leaved Mint-bush	Native	31/10/1896
<i>Prostanthera ovalifolia</i>		Native	1/03/2002
<i>Prostanthera saxicola</i>		Native	31/10/1897
<i>Salvia coccinea</i>		Exotic	2/04/1945
<i>Salvia reflexa</i>	Mintweed	Exotic	3/01/1984
<i>Salvia verbenaca</i>	Vervain	Exotic	22/12/2005
<i>Scutellaria humilis</i>	Dwarf Skullcap	Native	1/06/2009
<i>Scutellaria racemosa</i>		Exotic	21/10/1975
<i>Spartothamnella juncea</i>	Bead Bush	Native	29/06/2005
<i>Stachys arvensis</i>	Stagger Weed	Exotic	30/04/1885
<i>Teucrium argutum</i>		Native	4/03/1993
<i>Westringia fruticosa</i>	Coastal Rosemary	Native	20/03/2009
<i>Westringia longifolia</i>	Long-leaved Westringia	Native	25/09/1897
<i>Westringia spp.</i>		Native	25/10/2004
<i>Cassytha glabella</i>		Native	5/09/2007
<i>Cassytha glabella f. glabella</i>		Native	4/12/1998
<i>Cassytha pubescens</i>	Downy Dodder-laurel	Native	30/09/1897
<i>Cassytha spp.</i>		Native	17/07/2008
<i>Cinnamomum camphora</i>	Camphor Laurel	Exotic	1/06/2009

Scientific Name	Common Name	Native or Exotic	Last Sited
<i>Cryptocarya glaucescens</i>	Jackwood	Native	25/02/1899
<i>Lemna disperma</i>		Native	13/03/2008
<i>Spirodela punctata</i>		Native	14/03/2003
<i>Wolffia australiana</i>		Native	12/08/1988
<i>Utricularia</i> spp.		Native	4/12/1998
<i>Lilium formosanum</i>	Formosan Lily	Exotic	1/06/2009
<i>Linum marginale</i>	Native Flax	Native	13/03/2008
<i>Linum trigynum</i>	French Flax	Exotic	27/10/1894
<i>Linum usitatissimum</i>	Flax	Exotic	25/05/1968
<i>Lindsaea linearis</i>	Screw Fern	Native	5/09/2007
<i>Lindsaea microphylla</i>	Lacy Wedge Fern	Native	17/07/2008
<i>Isotoma axillaris</i>	Showy Isotome	Native	30/11/1899
<i>Isotoma fluviatilis</i>	Swamp Isotome	Native	20/12/1963
<i>Isotoma fluviatilis</i> subsp. <i>borealis</i>		Native	12/04/1987
<i>Lobelia anceps</i>		Native	1/03/2002
<i>Lobelia dentata</i>		Native	5/09/2007
<i>Lobelia gracilis</i>	Trailing Lobelia	Native	28/12/1964
<i>Lobelia</i> spp.		Native	18/01/2005
<i>Monopsis debilis</i> var. <i>depressa</i>		Exotic	4/03/2008
<i>Pratia concolor</i>	Poison Pratia	Native	22/11/1992
<i>Pratia purpurascens</i>	Whiteroot	Native	23/07/2009
<i>Gelsemium sempervirens</i>	Yellow Jessamine	Exotic	15/11/2006
<i>Logania albiflora</i>		Native	31/10/1898
<i>Logania albiflora</i> subsp. <i>IS</i>		Native	14/09/1966
<i>Logania pusilla</i>		Native	09/11/1889
<i>Mitrasacme alsinoides</i>		Native	16/05/2006
<i>Mitrasacme polymorpha</i>		Native	5/09/2007
<i>Lomandra brevis</i>		Native	30/11/1899
<i>Lomandra confertifolia</i>	Matrush	Native	17/09/2008
<i>Lomandra confertifolia</i> subsp. <i>pallida</i>	Matrush	Native	5/09/2007
<i>Lomandra confertifolia</i> subsp. <i>rubiginosa</i>		Native	13/01/1999
<i>Lomandra cylindrica</i>		Native	16/10/1984
<i>Lomandra filiformis</i>	Wattle Matt-rush	Native	23/07/2009
<i>Lomandra filiformis</i> subsp. <i>coriacea</i>	Wattle Matt-rush	Native	5/09/2007
<i>Lomandra filiformis</i> subsp. <i>filiformis</i>		Native	20/03/2009
<i>Lomandra fluviatilis</i>		Native	17/07/2008
<i>Lomandra glauca</i>	Pale Mat-rush	Native	4/05/2007
<i>Lomandra gracilis</i>		Native	17/09/2008
<i>Lomandra longifolia</i>	Spiny-headed Mat-rush	Native	24/11/1893
<i>Lomandra micrantha</i> subsp. <i>tuberculata</i>	Small-flowered Mat-rush	Native	18/01/2005
<i>Lomandra montana</i>		Native	19/08/1989
<i>Lomandra multiflora</i> subsp. <i>multiflora</i>	Many-flowered Mat-rush	Native	17/09/2008
<i>Lomandra obliqua</i>		Native	17/09/2008
<i>Amyema cambagei</i>	Needle-leaf Mistletoe	Native	12/05/1977
<i>Amyema congener</i> subsp. <i>congener</i>		Native	20/10/2004
<i>Amyema gaudichaudii</i>		Native	30/11/1895
<i>Amyema miquelii</i>	Box Mistletoe	Native	14/11/2005
<i>Amyema pendulum</i>		Native	15/11/2006
<i>Amyema pendulum</i> subsp. <i>pendulum</i>		Native	27/12/1918
<i>Amyema</i> spp.	Mistletoe	Native	19/04/2004