

**LEGEND**

6232000mN GDA94/MGA94 Grid (Zone 56)

Precinct boundary

Homestead boundary

212  
Test Pit where pH of soil at 0.5m depth was < 4.5 (moderately aggressive to concrete)

206  
Test Pit where pH of soil at 0.5m depth was 4.5 - 5 (mildly aggressive to concrete)

Test Pit where pH of soil at 0.5m depth was > 5 (non-aggressive to concrete)



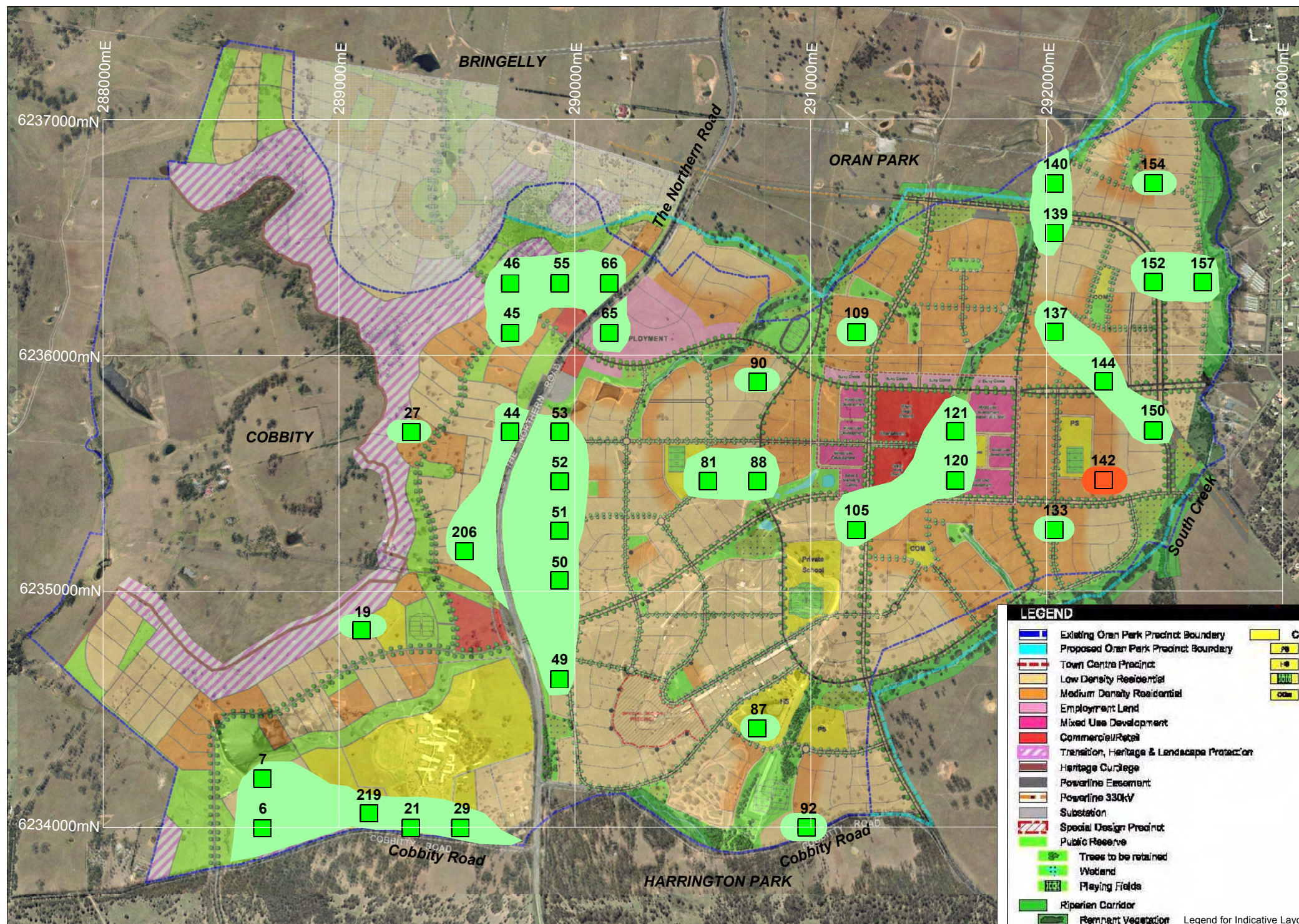
Sydney, Newcastle, Brisbane,  
Melbourne, Perth, Darwin,  
Wyong, Campbelltown, Canberra  
Townsville, Cairns, Wollongong

TITLE: **AGGRESSIVITY - 0.5m  
LAND CAPABILITY STUDY  
ORAN PARK PRECINCT  
ORAN PARK AND COBBITY**

CLIENT: APP CORPORATION PTY LTD

DRAWN BY: JL SCALE: 1:20,000 @ A3 PROJECT No: 40740 OFFICE: SYDNEY

APPROVED BY: DATE: FEBRUARY 2007 DRAWING No: 18



**LEGEND**

	Existing Oran Park Precinct Boundary		Community
	Proposed Oran Park Precinct Boundary		Primary School
	Town Centre Precinct		High School
	Low Density Residential		Playing Fields
	Medium Density Residential		Community Facilities
	Employment Land		
	Mixed Use Development		
	Commercial/Retail		
	Transition, Heritage & Landscape Protection		
	Heritage Curtilage		
	Powerline Easement		
	Powerline 330kV		
	Substation		
	Special Design Precinct		
	Public Reserve		
	Trees to be retained		
	Wetland		
	Playing Fields		
	Riparian Corridor		
	Remnant Vegetation		
	Creek Lines		

Legend for Indicative Layout Plan (ILP) dated 7 Feb 07  
(translucent underlay to constraint features)

**LEGEND**

6232000mN GDA94/MGA94 Grid (Zone 56)

Precinct boundary


Homestead boundary

212 Test Pit where pH of soil at 0.5m depth was < 4.5 (moderately aggressive to concrete)

206 Test Pit where pH of soil at 0.5m depth was 4.5 - 5 (mildly aggressive to concrete)

Approximate region where development may be constrained by mild aggressivity of soil to concrete at depths of the order of 1.5m

Approximate region where development may be constrained by moderate aggressivity of soil to concrete at depths of the order of 1.5m



**Douglas Partners**

*Geotechnics . Environment . Groundwater*

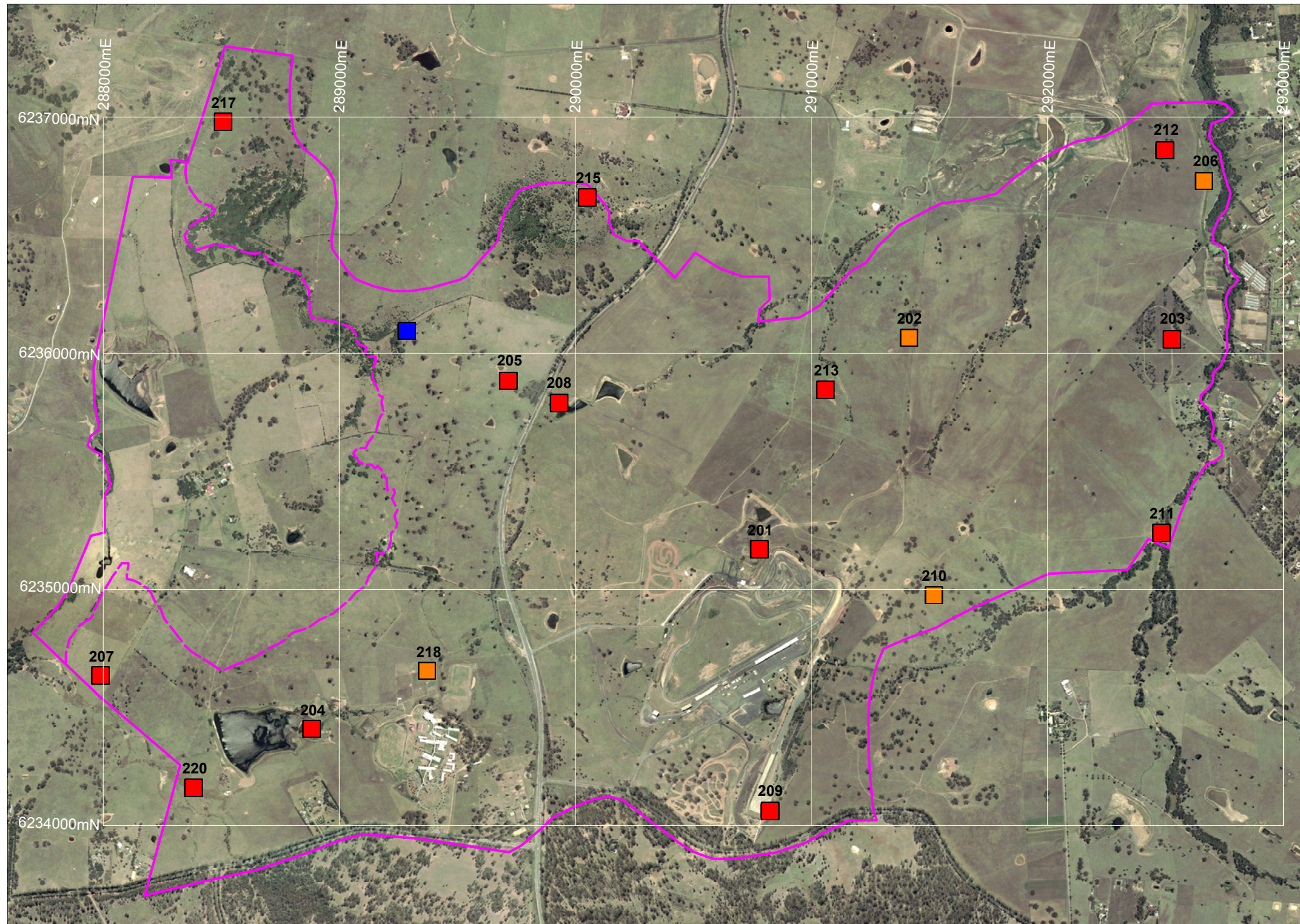
Sydney, Newcastle, Brisbane,  
Melbourne, Perth, Darwin,  
Wyong, Campbelltown, Canberra  
Townsville, Cairns, Wollongong

---

TITLE: **AGGRESSIVITY CONSTRAINTS - 1.5m  
LAND CAPABILITY STUDY  
ORAN PARK PRECINCT  
ORAN PARK AND COBBITTY**

---

CLIENT: APP CORPORATION PTY LTD			
DRAWN BY: JL	SCALE: 1:20,000 @ A3	PROJECT No: 40740	OFFICE: SYDNEY
APPROVED BY:	DATE: FEBRUARY 2007	DRAWING No:	<b>19</b>



**LEGEND**

6232000mN GDA94/MGA94 Grid (Zone 56)

Precinct boundary

Homestead boundary

**212**

Test Pit where sodicity of soil at 0.5m depth was >15 (highly sodic)

Test Pit where sodicity of soil at 0.5m depth was 5 - 15 (sodic)

Test Pit where sodicity of soil at 0.5m depth was <5 (non-sodic)

**Douglas Partners**  
Geotechnics . Environment . Groundwater

Sydney, Newcastle, Brisbane,  
Melbourne, Perth, Darwin,  
Wyong, Campbelltown, Canberra  
Townsville, Cairns, Wollongong

TITLE: **SODICITY - 0.5m  
LAND CAPABILITY STUDY  
ORAN PARK PRECINCT  
ORAN PARK AND COBBITTY**

CLIENT: APP CORPORATION PTY LTD

DRAWN BY: JL	SCALE: 1:20,000 @ A3	PROJECT No: 40740	OFFICE: SYDNEY
APPROVED BY:	DATE: FEBRUARY 2007	DRAWING No:	<b>20</b>