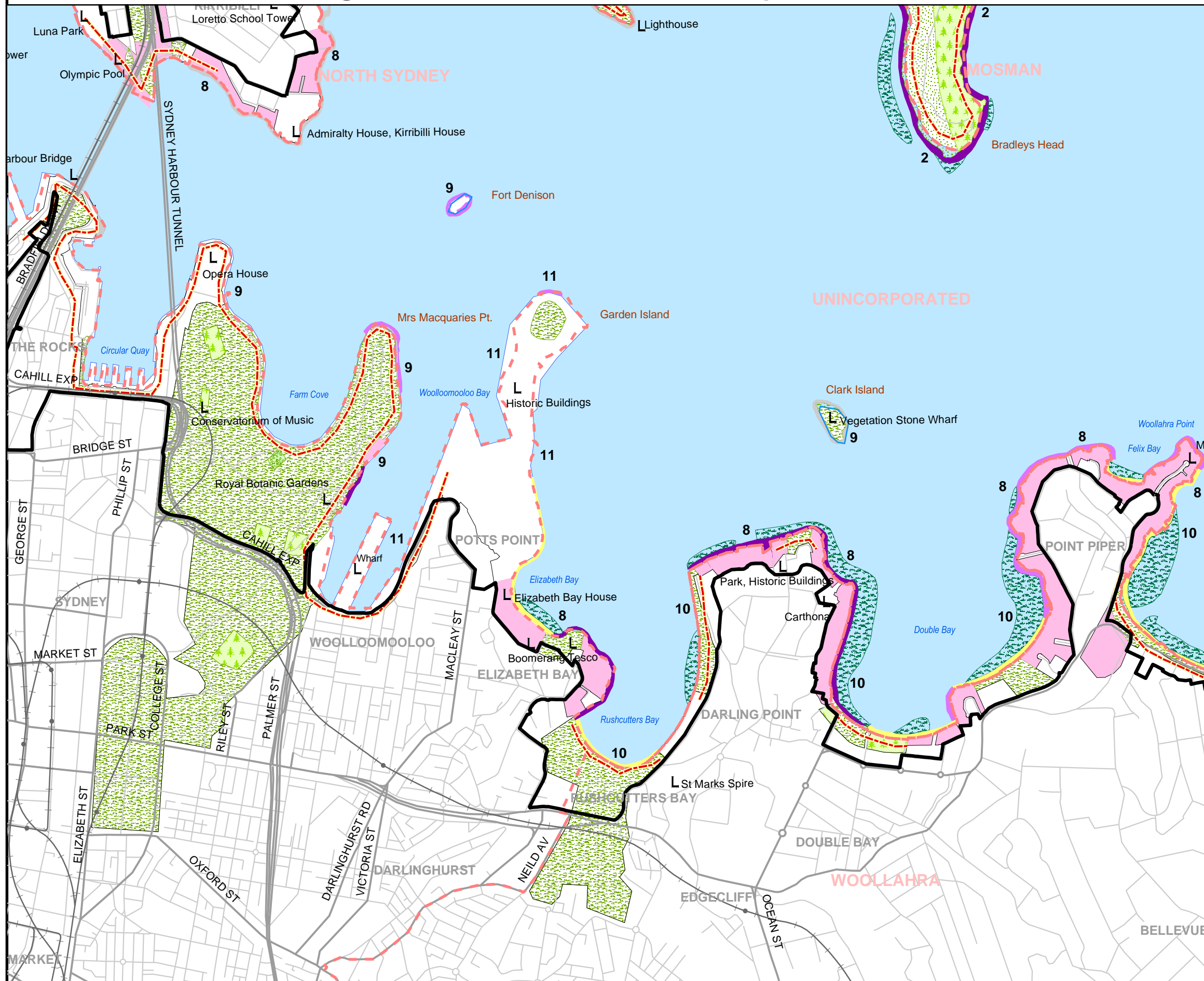


Sydney Harbour - Foreshores and Waterways Area Development Control Plan: Ecological Communities and Landscape Characters

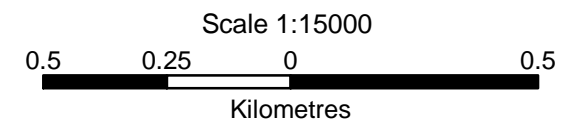
Map 11



Legend

- Foreshores & Waterways Area boundary
- Terrestrial Ecological Communities**
 - Closed Forest/Gully
 - Open Forest (Type A)
 - Open Forest (Type B)
 - Woodland
 - Heathland
 - Saltmarsh
 - Grassland
 - Urban Development with Scattered Trees
- Aquatic Ecological Communities**
 - Rocky Platform
 - Mixed Rocky Intertidal and Sand
 - Mixed Rocky Intertidal and Rock Platform
 - Sandy Beaches
 - Mudflats
 - Mudflats and Mangroves
 - Mixed Rock Intertidal and Mudflats
 - Seagrass Beds
 - Area not mapped: Site Specific Investigations required
- 15 Landscape Character Type**
 - Railway Stations
 - Railways
 - Street Centreline
 - Landmark
 - Highways and Main Roads
 - Local Government Boundaries
 - Existing & Future Pedestrian Access: Indicative Locations
 - Water
 - Rivers and Creeks

DISCLAIMER
The maps are indicative of ecological communities and landscape characters. Site specific investigations should be undertaken to confirm actual site conditions



Produced by DIPNR, February 2005
PID Spatial Dwg. No. 0428