

**Western Sydney Aerotropolis
Community Consultative Committee**

Meeting No: 7

Date: 5 April 2022, 6:30pm – 8pm

Venue: Zoom

Attendees	
<p>Community members Sam Aloï Paul Buhac Rob Heffernan Joe Herceg Carleen Markuse Roger Moss Ross Murphy Paul Taglioli Diana Vukovic Wayne Willmington</p>	<p>Other attendees Fernando Ortega, Commercial Partnerships Manager, Sydney Water Michael Johnson, Community Engagement Manager, Sydney Water Madhu Pudasaini, Manager Infrastructure Planning, Liverpool City Council Elizabeth Irwin, Director, Conservation and Sustainability, Department of Planning and Environment Katy Hannouch, General Manager Community Engagement Partnerships, Western Sydney Airport Tim Nairne, Senior External Affairs Advisor, Western Sydney Airport Rania Zahab, Transport for NSW Kate Robinson, office of the Independent Community Commissioner</p>
<p>Government representatives Catherine Van Laeren, Executive Director, Western Parkland City, Department of Planning and Environment (DPE) Wendy Carlson, Precinct Place Manager, Western Parkland City Authority Justine Kinch, Western Parkland City Director, Transport for NSW Natasha Borgia, City Planning Manager, Penrith City Council Charles Wiafe, Service Manager Transport Manager, Liverpool Council</p>	<p>Independent Chair Professor Roberta Ryan, Independent Community Commissioner Minute taker Georgia Peters, office of the Independent Community Commissioner</p>

	<p>Apologies Scott MacKillop, Chief Corporate Affairs Officer, Western Sydney Airport</p> <p>Helen Anderson</p> <p>Gabriella Condello</p> <p>Lina Kakish, A/Manager City Planning, Liverpool City Council</p>
--	---

Item	Description	Action
1	Welcome and introductions	
	<p>RR welcomes everyone to the meeting and introduces all participants.</p> <p>LK is an apology and Charles Wiafe (CW) is attending in her place. SM, HA and GC are also apologies.</p>	
2	Actions from last meeting - KR	
	<p>JK has reached out to Council to address Action 2 and 3.</p> <p>CW confirms receipt of this.</p> <p>All other actions are completed excluding Action 7 – Agribusiness update, which is in progress and going to be deferred to May.</p> <p>WC provides the following update regarding Action 7:</p> <ul style="list-style-type: none"> - The Authority has been consulting with stakeholders on an integrated freight concept which considers what is needed with the agribusiness and the air cargo precinct. - There will be a report released on this in May. A more detailed update will be provided at this time. <p>WC says there will be a presentation going through the findings in May. She is open to receiving questions via email in the meantime.</p> <p>RH raises the letter sent to residents about the acquisition of properties. The letter sent to landowners says: <i>“We are writing to inform you that your property has been identified for future acquisition”</i>. RH says that this is misleading since it implies that all of a given property is being acquired, when most properties are only being partially acquired. He claims that a letter like this is problematic for those considering selling their property.</p>	

	<p>RR suggests it may have been a generic letter, and it would have been difficult to personalise it.</p> <p>CVL thanks RH for the feedback on the letter. She clarifies that a later passage in the letter advises people to find more information about how much of their land is being acquired on an online source and she reiterates RR's sentiment.</p>	
3	Update from Department of Planning – CVL	
	<p>CVL provides the following update:</p> <p>She notes that engagement with the community about the package has begun. They held an industry session and two community sessions so that they can contact as many people as possible.</p> <p>They have had a high response to 'Talk to a planner' sessions.</p> <p>Her advice to elderly people is to take advantage of the virtual meetings. The Department is capping numbers for the face-to-face consultation on 9 April because of COVID. She flags that elderly people are probably best suited to a virtual session to avoid health risks.</p> <p>She says that the sessions with planners will remain available into the future.</p> <p>The majority of inquiries concern acquisition.</p> <p>CVL thanks her colleagues at Sydney Water for their participation with stormwater on properties.</p> <p>PT recounts a concern of his neighbour: ¾ of his land is earmarked for acquisition. He was told that if he wanted to sell before 1 July he would be dealing with State government whereas after this he would be dealing with Liverpool Council. How does he sell?</p> <p>CVL says there are a couple of options available:</p> <ol style="list-style-type: none"> 1. Sell to a developer 2. Approach the Department if he wants to sell the front-end 3. He could put it on the market. <p>PT asks if he would be able to subdivide this? For instance, could he sell 10,000m² to a developer as a parcel and sell the remaining to the Department?</p>	

	<p>CVL says there is no guarantee unless he qualifies for hardship. There is no guarantee that the land will be immediately acquired. They can't cut the back off. He needs to test the market.</p> <p>RR opens to questions.</p> <p>JH seeks an update on the water plan given the flooding issues.</p> <p>CVL is working on getting it updated. However, they need to complete the following administrative processes:</p> <ul style="list-style-type: none"> - Creation of the map - Writing the report for approval - Approval. <p>CVL notes that the floodline will be removed entirely because it is a duplication.</p> <p>JH notes an impact on p. 41 of the report. He flags Park Edge Street.</p> <p>CVL says that local roads are only indicative and will depend on what happens when they get into detailed planning.</p> <p>DV raises the overlay for stormwater and asks when this will be put into writing for communities in the Aerotropolis. This is an issue that follows last meetings discussion about the overlay and change of zones.</p> <p>PT asks for an explanation of a riparian road and the ramifications of this for properties.</p> <p>CVL and FO define a riparian road as a wider road that has urban water-sensitive design. It has corridors alongside roads for access to parks and open community areas. It is for water to run down.</p> <p>PT notes that these roads may impact communities and asks if there will be any issues with it?</p> <p>CVL says riparian roads are collection points. They can use the water for other purposes. It is regulated under the <i>Water Management Act 2000</i>.</p> <p>In response to PT's question, CVL says that riparian roads are a new term.</p>	<p>CVL to provide confirmation to DV in writing.</p> <p>CVL to provide more details regarding riparian roads.</p>
--	---	---

	<p>CM is asking to understand what a riparian road is and stresses that residents are finding this very confusing. They are not riparian roads but they are being classified as such.</p> <p>RR thanks CVL for her contribution to the meeting and CVL leaves the meeting.</p>	
4	Update: Sydney Water plans and activity – FO, MJ	
	<p>RR introduces FO and MJ and thanks them for joining.</p> <p>MJ and FO provide a presentation with updates on Sydney Water projects in the Western Sydney Area.</p> <p>PT says that Sydney Water didn't even know that the work - which has been impacting his amenities - was happening.</p> <p>FO says that issues weren't being reported by the community to the maintenance centre so they couldn't put proper procedures into motion.</p> <p>MJ and FO open to questions.</p> <p>RR thanks both for the presentation and notes that there is a lot of infrastructure being laid down that is impacting residents.</p> <p>RR suggests that Sydney Water develop a reporting system to the community about what works they will be undertaking and when.</p> <p>DV asks about the station pump on Pitt St. Are they collaborating with the utility provider?</p> <p>FO says they are not. Sydney Metro was conducting works at 185 Pitt St. A company called Electrical Services has been doing work on behalf of Sydney Metro.</p> <p>DV flags that truck drivers are driving 80 km/h and its unsafe for the community.</p> <p>DV asks why the last letter that was issued stated that there would be excavation on properties?</p> <p>FO says there is no excavation planned. They are only at concept stage which includes some poking in around properties.</p> <p>DV asks for a timeframe around the sewer pipeline for the area.</p>	<p>MJ and FO to provide a copy of the presentation to the group.</p> <p>FO to pass on information about dangerous driving by truck drivers to responsible area.</p> <p>FO to check whether excavation is scheduled to</p>

	<p>PT adds that they are excavating and lopping trees and amenities have been impacted hugely, including electricity and water.</p> <p>JK says she will also make this a consideration in construction times of Badgerys Creek Rd.</p> <p>PB asks for elaboration on timeframe for drinking water and recycled water.</p> <p>RR says they are putting it together and thanks FO for his contribution.</p>	<p>MJ and FO to provide community with timeframe about drinking water and recycled water.</p>
5	Update: Cumberland Plain Conservation Plan – EI	
	<p>EI introduces herself including her role as Director of Conservation & Sustainability in DPE. Her role has been to prepare the Cumberland Plain Conservation Plan (CPCP).</p> <p>EI presents to the group.</p> <p>EI opens to questions and asks for input from the group as to how and when they would like to hear updates about the CPCP.</p> <p>PT asks, in the proposed rezoning of land, whether there will be compensation for landowners.</p> <p>EI notes that the proposed E2 zoning was a strong concern during public exhibition and that this feedback has been taken on board in the updated CPCP submitted for approval.</p> <p>PT asks how they are going to protect the land if they don't rezone it?</p> <p>EI says that it is a "balancing act" as they want to make sure that biodiversity is protected but use a different approach that allows the consent authority to consider the relevant planning controls at the time of application, rather than proposing a new zoning upfront through the CPCP.</p> <p>PT notes that he is unsure of the methodology used to determine biodiversity values in given areas, but his view is that they are placing more value on flora and fauna than on people and</p>	<p>EI to provide the slides from her presentation.</p>

	<p>landowners. In his network, people are so stressed that it is making them ill. These are people's entire livelihoods that are under threat.</p> <p>EI responds that the areas proposed to be certified for development are those which were assessed as having lower biodiversity values which is why this certification is able to progress upfront in the planning process. Other areas have been identified as either having higher biodiversity values or are excluded from the CPCP process, but landowners are welcome to progress their own applications and offsets if approved by the relevant consent authority.</p> <p>RR acknowledges PT's point and states that they have been involved in discussions about what is to be done. RR says that EI is limited in the information she is able to provide at this time.</p> <p>PB asks about the biodiversity values (BV) map. He notes that there is a threshold tool available online which doesn't seem to correlate with the CPCP map.</p> <p>EI notes that the biodiversity values identified in the BV map correlate closely with the strategic conservation area identified through the CPCP. The strategic conservation area identifies areas of strategic biodiversity value across the landscape. This means that there are additional areas identified under the CPCP which are proposed to be included in the BV map in the future. Where land is certified under the CPCP, the BV map will not apply.</p> <p>PB asks if the biodiversity visible on the threshold tool would be deleted on the CPCP map.</p> <p>EI responds that the BV mapping aligns closely with the CPCP mapping.</p> <p>PB encourages people to look at this map. There is a lot of area on the biodiversity map that isn't shown on the CPCP map that will inhibit development. He notes that this map is updated every 90 days.</p> <p>EI offers to set up a meeting with PB and a representative from the BV map team to discuss these technical questions relating to the BV map.</p> <p>PB asks if the CPCP map will trump the biodiversity map?</p>	<p>EI and PB to connect for a one-on-one meeting.</p>
--	---	---

	<p>EI responds that the BV map will no longer apply in the areas that are certified (peach colour) and will hopefully be extended to other areas added by the CPCP mapping.</p> <p>JH asks if these studies are desktop studies?</p> <p>EI says that the intention was never to complete on-site assessments on every lot across the CPCP. There were over 200 on-ground studies conducted by ecologists, but it was not exhaustive of the whole CPCP. This is in line with the process required under the <i>Biodiversity Conservation Act 2016 (BCA)</i>.</p> <p>EI is keen to hear suggestions on the best ways to disseminate information with communities.</p> <p>PB asks if the CPCP map be in line with what is being released in the coming weeks?</p> <p>EI says that the mapping has changed through consideration of the feedback provided. The updated mapping will be provided once the CPCP is approved by both Cth and NSW Ministers for Environment and the final CPCP is released..</p> <p>DV asks EI to provide the information about biodiversity including maps to the CCC members when available, which EI said she will.</p> <p>RR thanks EI for her time.</p>	<p>EI to send through final package when it is completed.</p>
6	Update: road and safety conditions – RR, JK, LK	
	<p>RM and RR attended a meeting in the last fortnight with Liverpool Council and Transport for NSW where they raised a number of issues concerning safety and conditions of Elizabeth Dr. It seems that they have taken on board ideas regarding treatment and management options.</p> <p>JK provides the following update:</p> <ul style="list-style-type: none"> - They have progressed at looking for options concerning Devonshire and Western Rds. - They have identified potential funding and delivery options, which look promising and might include a staged approach. - They have identified ways to expedite interim solutions for these intersections. 	
7	Community Consultative Committee operations – RR	
	<p>KR has opened recruitment for a Kemps Creek representative and promoted across social media. There have been no applications</p>	

	at this stage. RR follows up on the request for people to reach out to the networks regarding the opportunity for a representative from Kemp's Creek to join the CCC.	
8	Other business – RR	
	<p>RR provides a reminder to the group concerning the session occurring on Saturday.</p> <p>KR says that the Department of Planning is hosting this session and Transport for NSW, WCPA, WSA Co and Sydney Water will be present.</p> <p>WW asks if they are going to extend this session to more days since it is currently booked out.</p> <p>RR says they are looking at that and they have managed to free up some times. She notes that these sessions will happen on a regular basis.</p> <p>WW asks NB about Development Applications (DAs). He says that people have gone to Penrith Council to put in DAs but Council is not accepting applications yet.</p> <p>NB takes this on notice because she is not aware of rejecting DAs. Needs a specific example to follow that up.</p> <p>DV directs her question to KH regarding the issue of flooding on Elizabeth Dr in between the new Badgerys Creek Rd and the bridge. What are they doing about the water, particularly as the rainfall increases during the week?</p> <p>KH says that she needs to get in touch with the Environment Team and that she is happy to facilitate a direct discussion.</p> <p>DV says they anticipate 100 mm of rainfall on Thursday. What is the airport's plan?</p> <p>KH says she understands the emerging rain events. They have processes in place such as containment of 400 megalitres of rainwater on site, which is discharged only when necessary.</p> <p>DV asks why they don't discharge this water when it's not raining?</p> <p>KH says that the technical questions have to go to the construction and environment team but it is her understanding that some water is discharged on the site.</p>	<p>WW and NB to connect regarding rejected DAs.</p> <p>KH to facilitate a direct discussion with DV and the Environment Team.</p>

	<p>DV says that this does not seem to be minimising the impact on Elizabeth Dr.</p> <p>RR thanks everyone for their participation and closes the meeting.</p>	
9	Next meeting	
	3 May 2022, 6:30pm-8pm	




Sydney
WATER

Major Projects and the Western Parkland City


CCC Meeting April



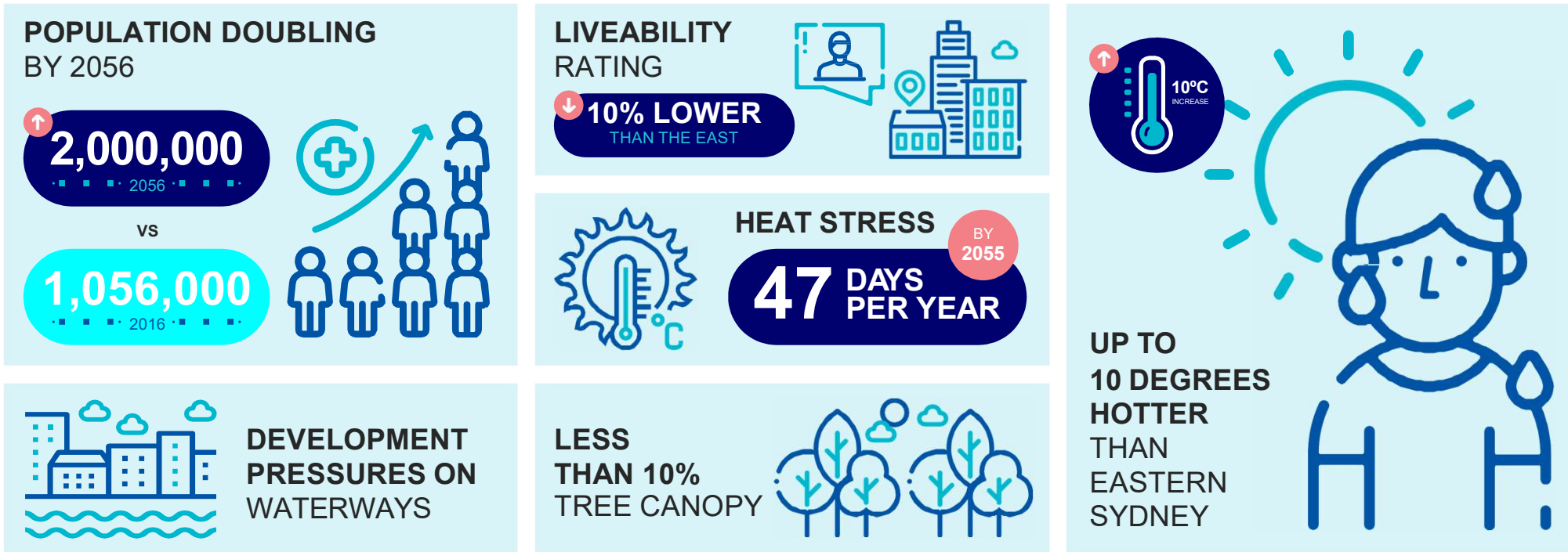
Acknowledgement of country



Sydney Water respectfully acknowledges the traditional custodians of the land and waters on which we work, live and learn. We pay respect to Elders past and present. In the Western Parkland City we acknowledge the Darrug people.



Water will transform our future city



**COVID-19
RESET**

 **VALUING GREEN SPACE**

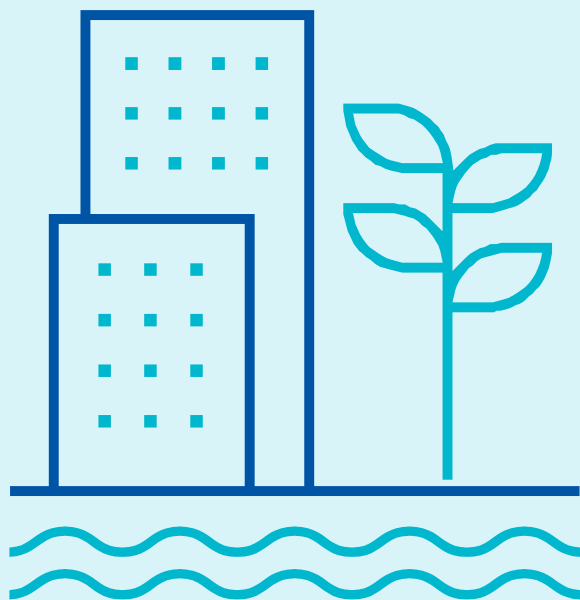
 **QUALITY PUBLIC SPACES**

 **PLACES TO SWIM**

Sydney Water is leading the transformation

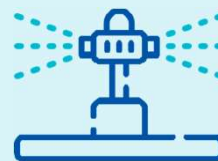
\$3 billion infrastructure investment

Coordinated and collaborative



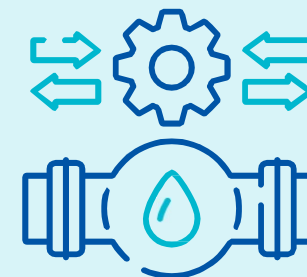
Smart irrigation

Cooling urban areas



Building resilience

Integrated water cycle management



CUSTOMER AT THE HEART

Urban Plunge

Creating clean, safe places to swim



Circular economy

A hub for water, waste and energy



Western Parkland City

Sydney Water's investment in the Western Parklands City aims to facilitate major growth and development with core water through South Prospect to Macarthur (PROMAC) and wastewater (1,3,13,17,19 and 27) services, but in a way that creates a city that is cooler and greener to live in and is enabled with greener energy and other economic resource recovery including water reuse with the Upper South Creek Advanced Water Recycling Centre.

This supports the NSW Government's vision of the Western Parkland City – to be a green, liveable and sustainable city. We are also investing in a new model of integrated waterway management as well with the Aerotropolis Stormwater.

- Development and Urban Growth
- Urban Greening and Cooling
- Waterways protection and resilience
- Opportunities for water recycling
- Circular economy
- Diversified services

Legend		
1 Richmond Recycling Plant Upgrade (Over \$100m)	15 Prospect to Macarthur (PROMAC) (Over \$100m)	31 Picton Wastewater Management (Over \$100m)
3 Badgerys Creek Growth Services (Under 100m)	16 Prospect WFP upgrade (Under \$50m)	34 Cascades WFP and network upgrade – Drought resilience (Over \$50m)
5 South West Growth Area (Over \$0m)	17 Winmalee WWTP upgrade (Over \$50m)	35 Waterway services Mamre Road and Aerotropolis (Over \$100m)
7 South West Growth Area (Over \$50m)	18 Western Sydney Airport water supply (Under \$50m)	39 Oran Park to Narellan (PROMAC) (Over \$50m)
13 Sydney Science Park (Under \$50m)	19 Austral & Leppington (Over \$300m)	40 Liverpool to Cecil Park (PROMAC) (Over \$50m)
14 Upper South Creek AWRC (Over \$1b)	27 West Camden Treatment Amplification (Over \$100m)	Discretionary/Realignment Growth
		Renewal and Rehabilitation



Prospect South to Macarthur (ProMac)

Scope

- Build two new reservoirs
- Upgrade two existing reservoirs
- 15 kilometres of new pipelines
- Three new pumping stations

Timeline

Late 2020	Started construction
Ongoing	Staged construction
End 2023	Completion



Cater for growth



Increase resilience



ProMac Update

Status

- Western Sydney Parklands: pipeline construction completed, testing under way
- Coming up: Western Sydney Parklands: re-opening of M7 bridge and walk ways
- Cecil Park Reservoir: Re-chlorination plant concept design finalized
- Currans Hill Reservoir re-built commenced (picture)
- Mount Anna: Pipeline construction 96% complete

Community / Stakeholder Activities

- SW and other agencies represented in Greater Sydney Parklands Collaboration Video
- Closed out Home Plans with directly impacted residents in Kemps Creek
- Coming up: project newsletters to Oran Park / Harrington Park and Mount Annan

Website: www.sydneywatertalk.com.au/promac

Phone: 1800 678 098

Email: promac@sydneywater.com.au



Upper South Creek Advanced Water Recycling Centre

Scope

- Advanced Water Recycling Centre
- 17 kilometre treated water pipeline (West)
- 24 kilometre brine pipeline (East)

Timeline

2021	EIS completion
Mid-2022	Start construction
Late 2024	Finish construction
2025	New system operational



Cater for growth



Circular economy



Increased resilience



Around 13,000 customers and landowners live near or nearby to the proposed pipelines' route.

Another 18,500 will directly benefit from servicing plans this project enables.

Upper South Creek AWRC

- Amendments Report submitted to DPE and on public exhibition from 23 March to 5 April.
- Submissions Report to be submitted to DPE in April
- Ongoing engagement with landowners along pipeline alignment and around AWRC
- Procurement process continues for AWRC and pipelines delivery partner/s

Website: sydneywatertalk.com.au/uppersouthcreek
Phone: 1800 238 881
Email: uppersouthcreek@sydneywater.com.au



Badgerys Creek Wastewater service

We are planning to deliver wastewater infrastructure to service Badgerys Creek, and Bringelly. This infrastructure will be delivered in two stages.

Stage 1:

- Gravity pipelines will transfer wastewater to a future pumping station at Pitt Street.
- From Pitt Street, the wastewater will be pumped via an existing Sydney Water pipeline, to connect into the Liverpool Wastewater Network.
- Construction will start in 2023.

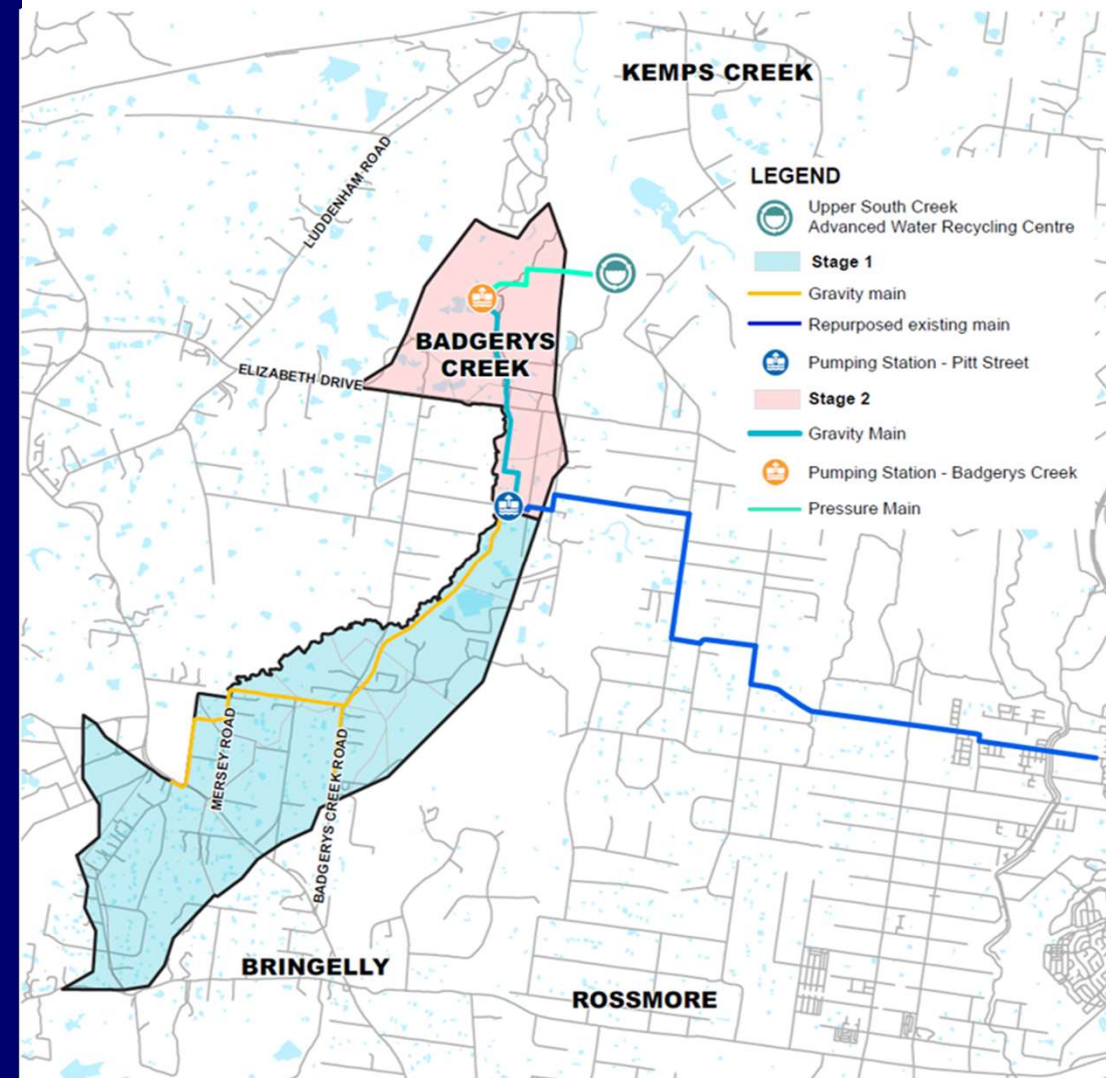
Stage 2:

- In future the wastewater will be redirected to a new pumping station at Badgerys Creek via with additional gravity pipeline.
- From here, flows from the catchment will be pumped to Sydney Water's Upper South Creek Advanced Water Recycling Centre via the new Badgerys Creek Pumping Station in 2025.
- Construction is expected to be completed in 2025.

Where to now

- We are progressing with investigations and site walk until June 2022
- You will receive a community information newsletter soon. Copies will also be available at the DPIE community session on 9 April.
- Between April – May 2022 all landowners affected by the wastewater network will receive letters to discuss this further.

Thank You all landowners who have allowed us on their properties



Aerotropolis Stormwater

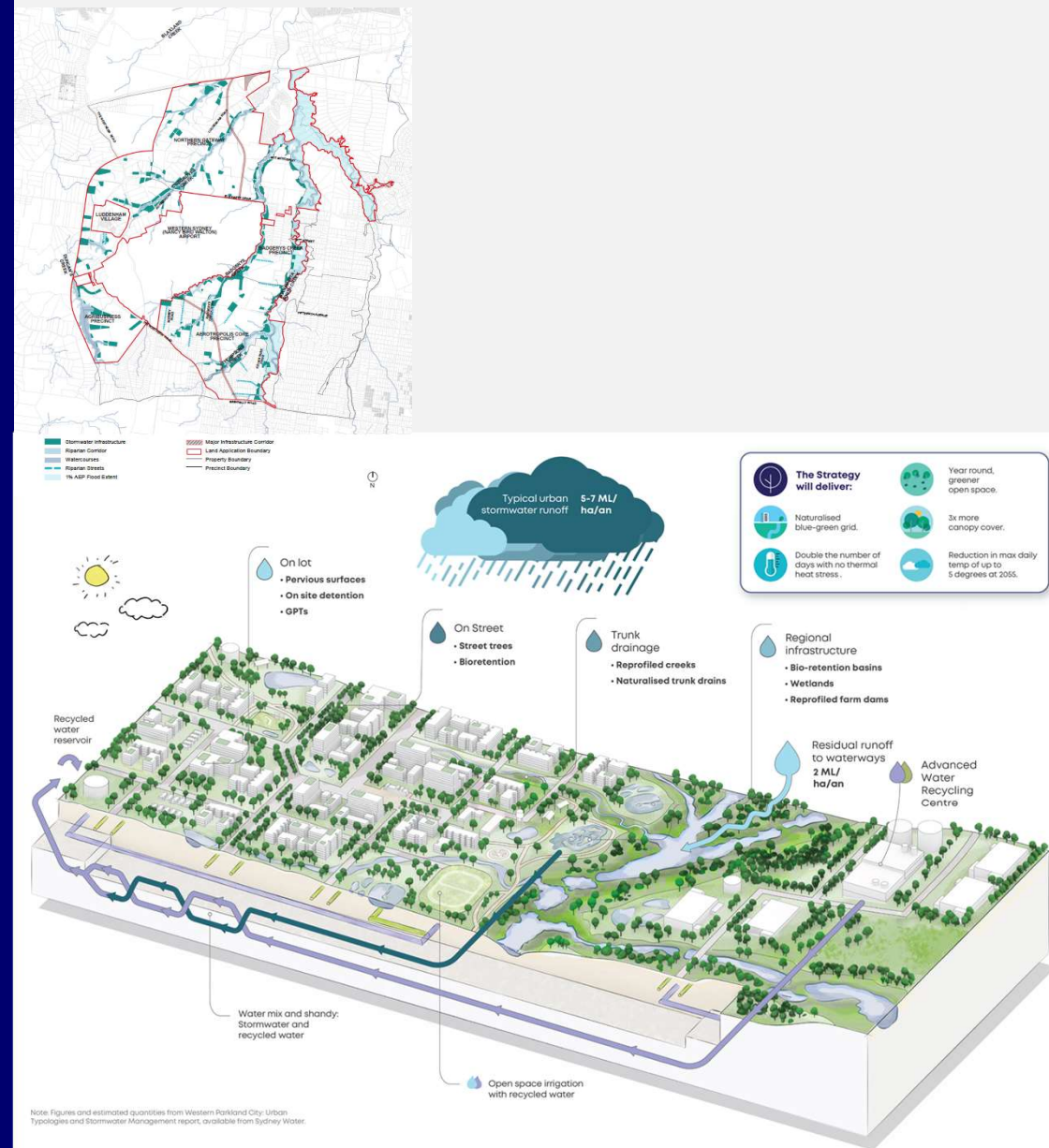
The NSW Government has appointed Sydney Water to provide stormwater drainage systems for the Mamre Road and Western Sydney Aerotropolis Initial Precincts.

Stormwater infrastructure in the Western Parkland City will:

- allow more efficient use of developable land through the consolidation of infrastructure on otherwise constrained land
- create a climate-independent water supply for greening and cooling through integrated stormwater harvesting and recycled water
- Improved liveability and amenity through year-round irrigation of public open spaces and street trees, mitigating urban heat
- Be a long-term strategy for the Aerotropolis and will be provided as development occurs across the precincts over the next 10-20 years and beyond.

Progress

- developed the high level plans for the integrated water systems for the precincts which are available with the Precinct Plans.
- Development Servicing Plans are expected to be exhibited later this year and land acquisition and construction to follow shortly after.



Western Sydney Aerotropolis

Indicative Wastewater Servicing Infrastructure



Legend

-  Advanced Water Recycling Centre
-  Proposed WW Gravity Main – Options Planning
-  Proposed WW Gravity Main – Concept Design
-  Proposed WW Pressure Main – Options Planning
-  Proposed WW Dual Pressure Main – Options Planning
-  Proposed WW Pressure Main (Interim) – Options Planning
-  Proposed WW Pressure Main (Interim) – Concept Design
-  Proposed Brine Line – Concept Design
-  Existing WW Pumping Station
-  Proposed WW Pumping Station – Options Planning
-  Proposed WW Pumping Station – Concept Design
-  Proposed Railway
-  Growth Precincts



For more information



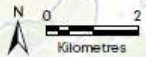
Western Sydney Aerotropolis

Indicative Drinking Water Servicing Infrastructure



Legend

- Advanced Water Recycling Centre
- Proposed DW Main (Promac) – Detailed Design
- Proposed DW Main (Promac) – Options Planning
- Proposed DW Main – Options Planning
- Proposed DW Main – Detailed Design
- Treated Water Line – Concept Design
- Proposed DW Reservoir – Detailed Design
- Proposed DW Pumping Station – Detailed Design
- Proposed Railway
- Growth Precincts



For more information



Sydney
WATER





Update: Cumberland Plain Conservation Plan

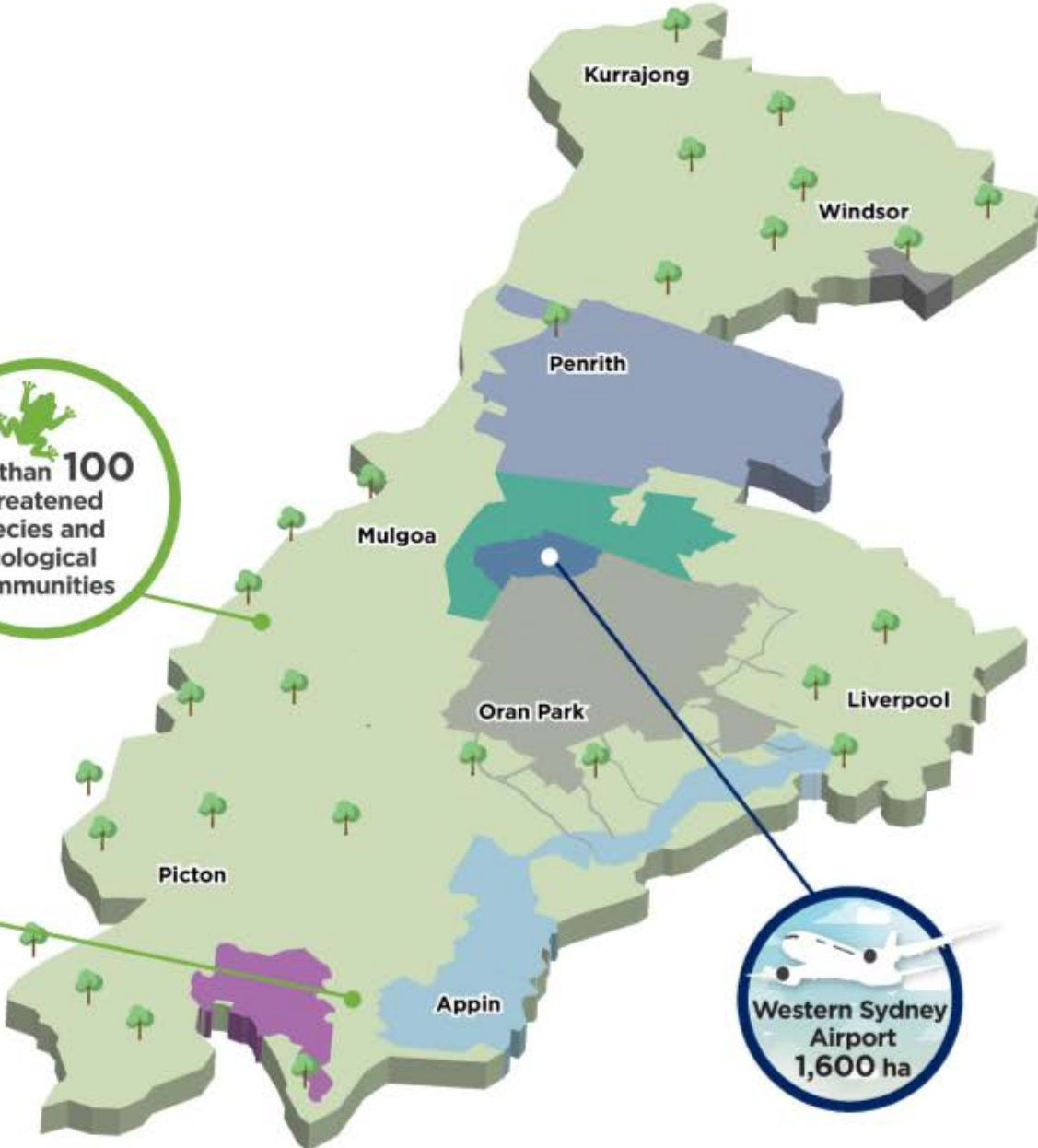


**We acknowledge Country.
We pay our respects to Elders
past, present and future.**

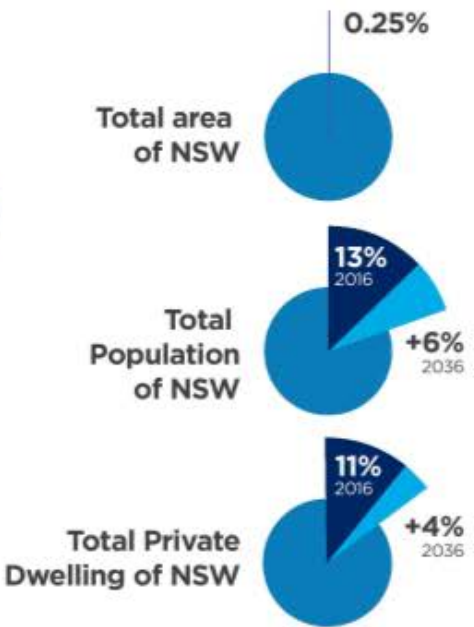
**200,000 ha
Plan Area**

**More than 100
Threatened
species and
ecological
communities**

**healthiest
koala population
in NSW**



**Western Sydney
Airport
1,600 ha**



- Greater Penrith to Eastern Creek Investigation Area
- Western Sydney Aerotropolis
- Western Sydney International (Nancy-Bird Walton) Airport
- Growth Centres - Strategic Conservation Planning completed 2012
- Greater Macarthur Growth Area
- Wilton Growth Area

68 ha of Wetland of National Importance 3 Catchment areas 680 km Waterways 3 Aboriginal Land Councils 100+ ethnicities +40,000 ha of potential Growth Areas 8 Local Government Areas

Supporting new housing and infrastructure



Streamlining approvals for landholders

The CPCP provides biodiversity approvals upfront in the planning process making it a simpler and more streamlined approach for landholders wanting to develop their land

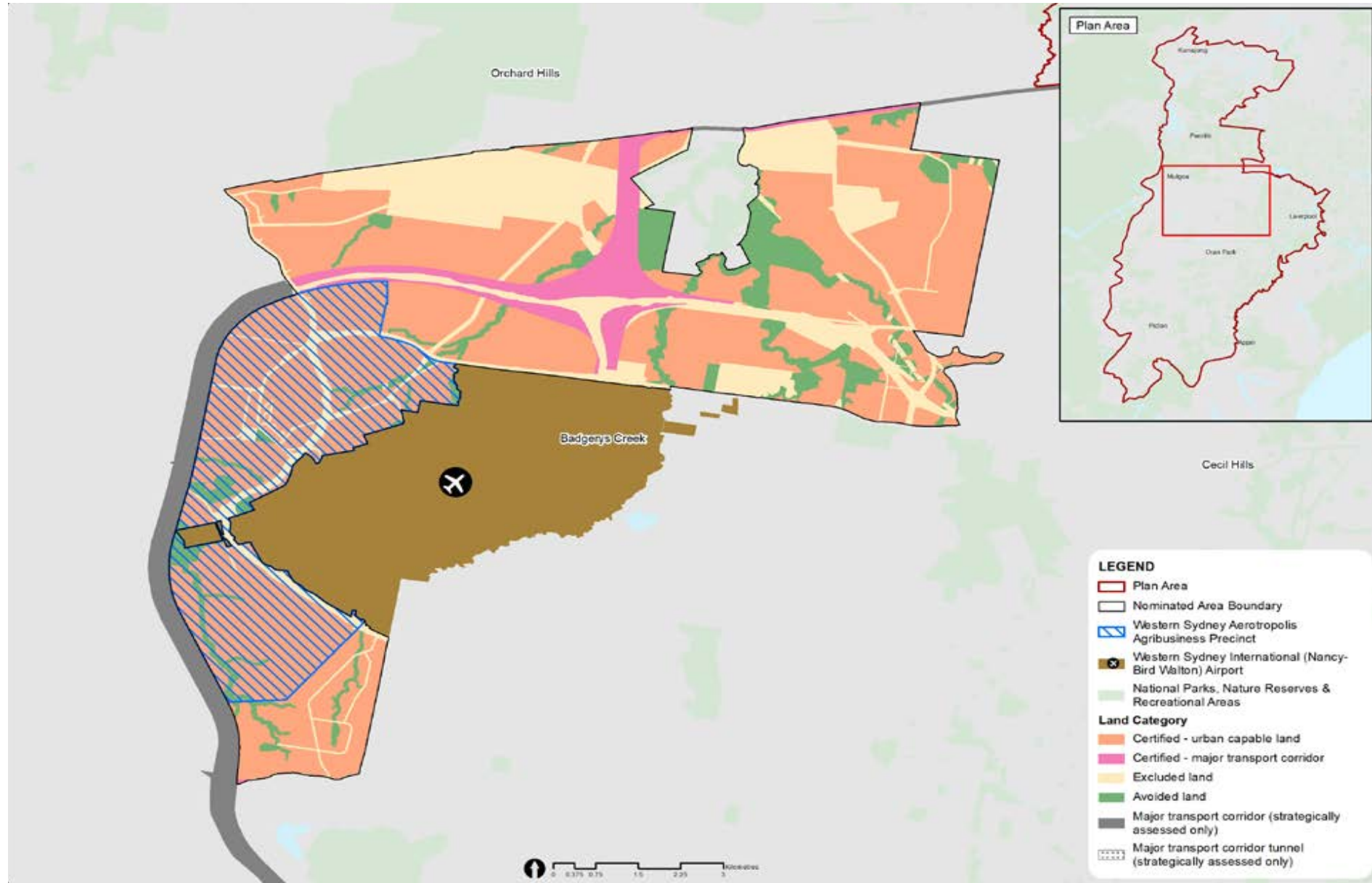


Upfront biodiversity approvals

The CPCP will facilitate biodiversity approvals across **11,000 hectares** of land to support new housing and infrastructure

Around **3,500 hectares** of certified-urban capable land within the Western Sydney Aerotropolis in the draft CPCP

Western Sydney Aerotropolis



Public Exhibition: Snapshot



508

submissions received



307 671

people reached via
social media within the
Western Sydney area



2,822

clicks to the spatial viewer



34,500+

department website views



926

letters posted

20

Council and stakeholder
meetings and briefings



2,902

E-newsletters sent by
the department



202

People attended the
community webinar



379

Phone and email
enquiries replied to



Feedback from community and stakeholders



Environmental conservation

- impact of proposed E2 zoning on landholders development opportunities and property value



Impacts to biodiversity

- impact to biodiversity and habitat connectivity from new infrastructure and development



Conservation program

- support for offsets inside the Plan area and for protection and inclusion of corridors in SCA.



Culture and heritage

- support for proposed Aboriginal Engagement and Implementation Strategy
- impact of development on rural agricultural land and on cultural/ Aboriginal heritage sites



Protecting koalas

- support for Georges River Koala Reserve and for securing all six habitat corridors identified in Chief Scientist Report
- impact of fencing to koala movement



Ecological restoration

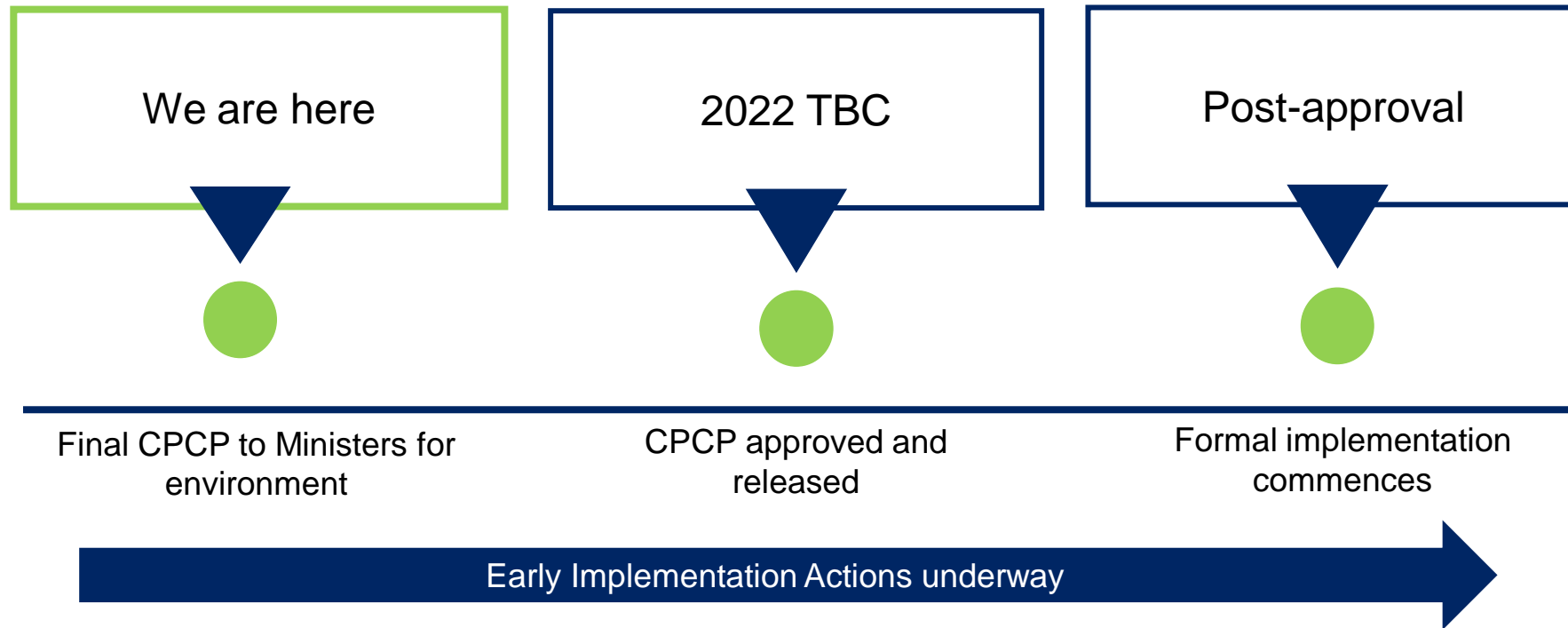
- prioritise conserving existing bushland and safeguarding ecosystems over restoration
- clarify seed production role in restoration program and undertake further research in restoration methods



Funding and implementation

- improve transparency of Plan's funding to deliver on commitments and outcomes and secure offsets, over the life of the Plan
- Clarify final SIC cost for Plan area and if employment land is subject to SIC

Where to next?





Questions