



Robert St Section

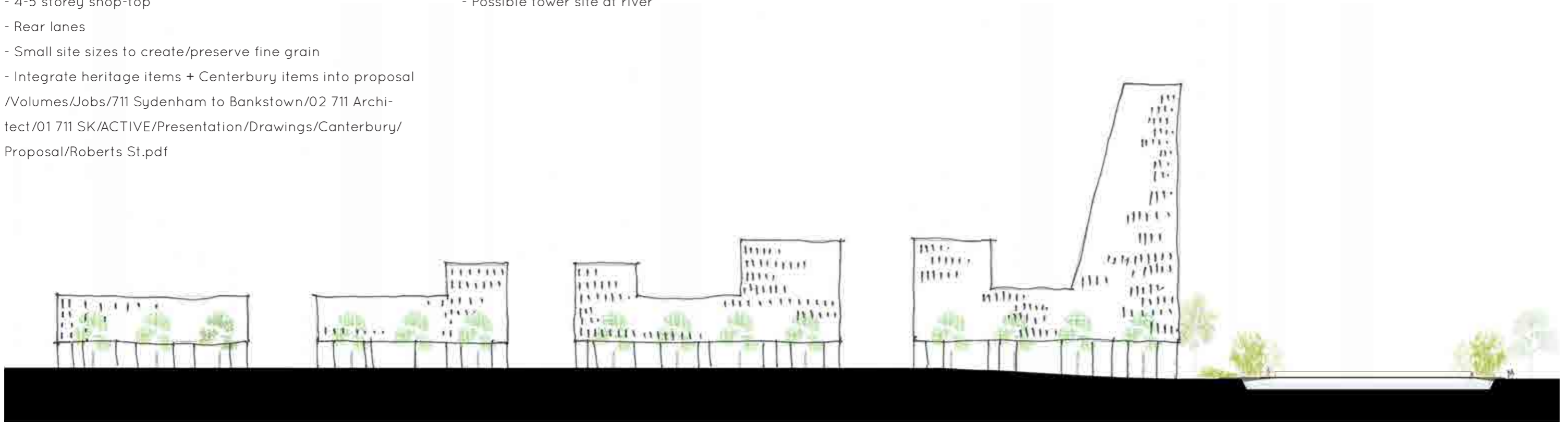
- 4-5 storey shop-top
 - Rear lanes
 - Small site sizes to create/preserve fine grain
 - Integrate heritage items + Canterbury items into proposal
- /Volumes/Jobs/711 Sydenham to Bankstown/02 711 Architect/01 711 SK/ACTIVE/Presentation/Drawings/Canterbury/Proposal/Roberts St.pdf

Canterbury Rd Section within 400m of station

- Possible tower site at river

Canterbury Rd Section 400-800m from station

Canterbury Rd Section 800m+ from station



Canterbury Rd Elevation

Explore 'street wall' concept for suitability/compliance with ADG



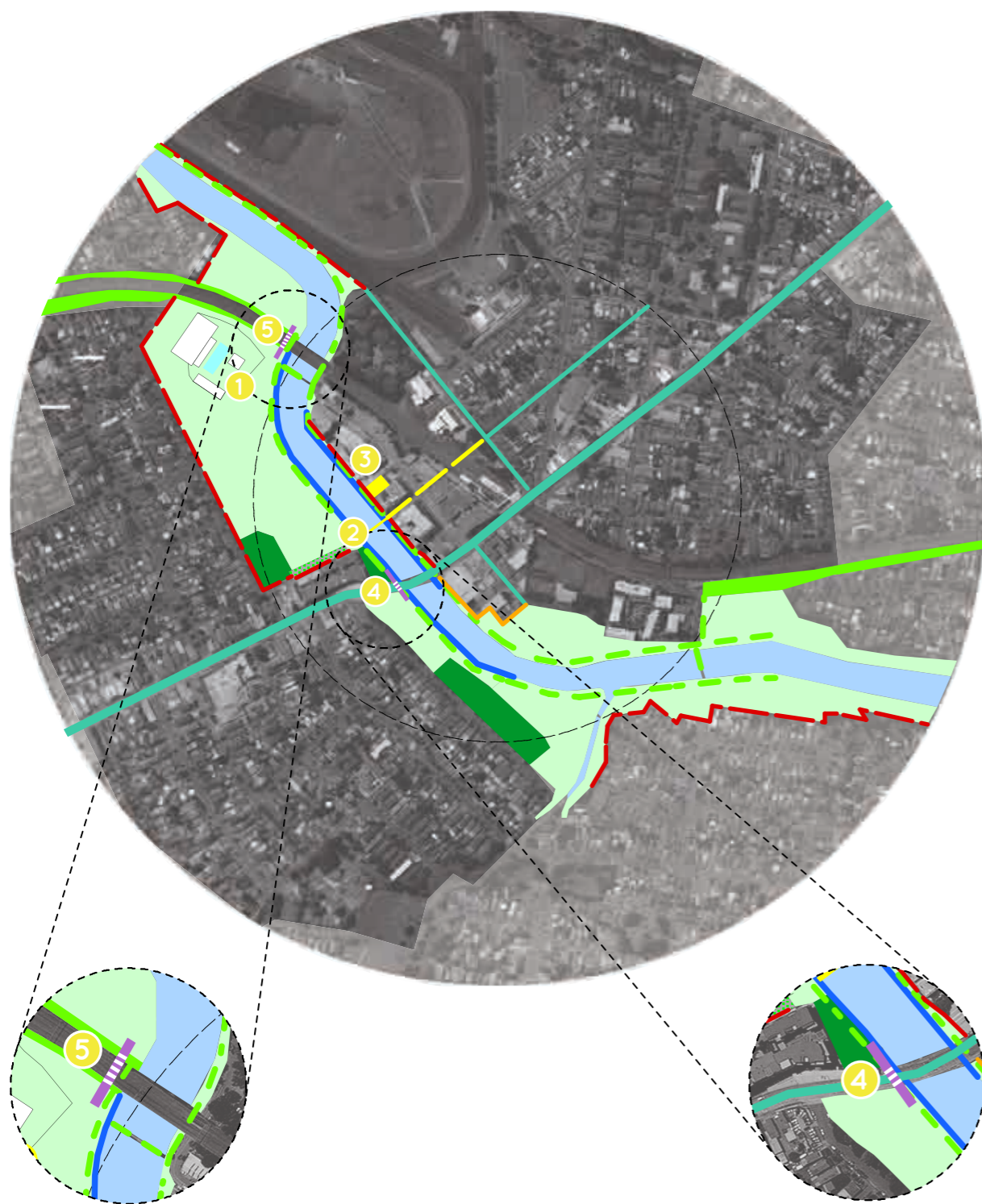
Location















Existing View from river front



Proposed View from river front towards Canterbury Road. Increased density at waterfront. Landscape walks to waterfront paths including strategy for public/private interface.



-  - Sites within park boundaries to be reconsidered
 -  - Open up rail corridor landscape zone/future bike path
 -  - Cooks River bike path, rail corridor bike path detours along river. Consider diverting bike path to South of river where there is more space.
 -  - Park to urban interface edge condition improvements including street edge treatment and treatment of private land/fence interface
 -  - Park to water edge condition improvements including planting, balustrading, platforms/widening, active and passive recreation uses at river edge
 -  - Key streets connecting town centre with parkland amenity to have linking landscape quality and generous street planting creating shade, precinct identity, great pedestrian environments and continuous green canopy
 -  - Controls required for new urban edge condition at proposed higher-density site interface. Consider reorientating housing to face river
 -  - New underpasses to Canterbury Road and Rail Corridor to connect riverside paths and facilitate continuous exercise loops
- Projects:
-  - Pool upgrade with public access reorientated to face park
 -  - New pedestrian bridge access and path to align with new high street
 -  - New cultural/youth centre
 -  - New/improved underpass to Canterbury Road
 -  - New underpass to railline.

4.4 RIVER FRONT PARKS

The proposal is for a series of improvements to the River Front parks in Canterbury.

Firstly, connections on the South side of the river should be improved, allowing access across Canterbury Road and under the rail corridor at the north of Tasker Park. Connecting these points will facilitate cycling/running loops in the Canterbury area.

Secondly, private land within the park boundaries of Tasker Park and Saint Mary McKillop Reserve should be considered to increase parkland, improve access to parkland and remove the ad hoc residential fence edge condition where park meets single private subdivision.

Edge conditions are generally poor. There is a consistently unsophisticated relationship between the parks/river side paths and the river's edge. This should be revisited as a project with the aim of providing access to the water's edge, variety, landscaping and amenity.

The proposal also includes the improvement of edges with the private domain. Where river-side parks meet private houses, there is an ad-hoc collection of different fence types, unfitting to a major public place.

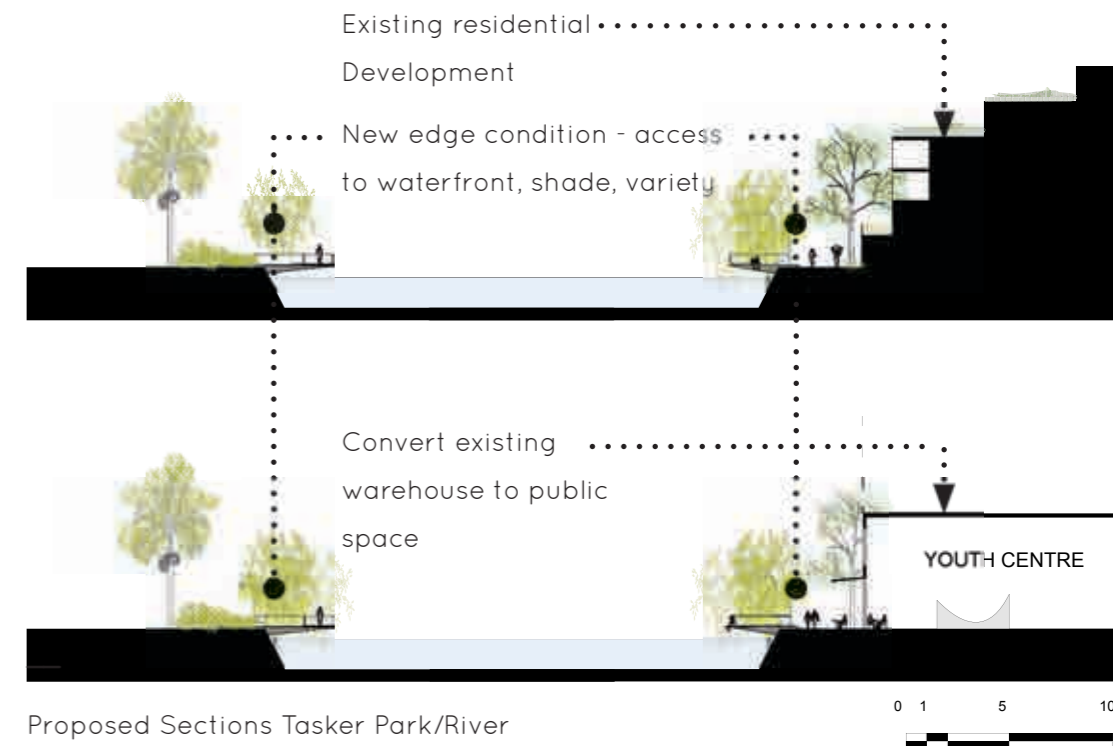
In particular, the edge conditions on the North side of the River at Tasker Park are poor. New residential flat buildings meet the ground poorly, compromising the public domain. Edges should be redesigned, including opportunities for public art, active uses like wall climbing, skate facilities, platforms and widening of the path over the river and a new bridge connecting the busy, narrow, currently unpleasant North side of the River with the open, underutilized, expansive South side of the river.

The proposal also calls for an extensive landscape plan for Canterbury introducing street planting.

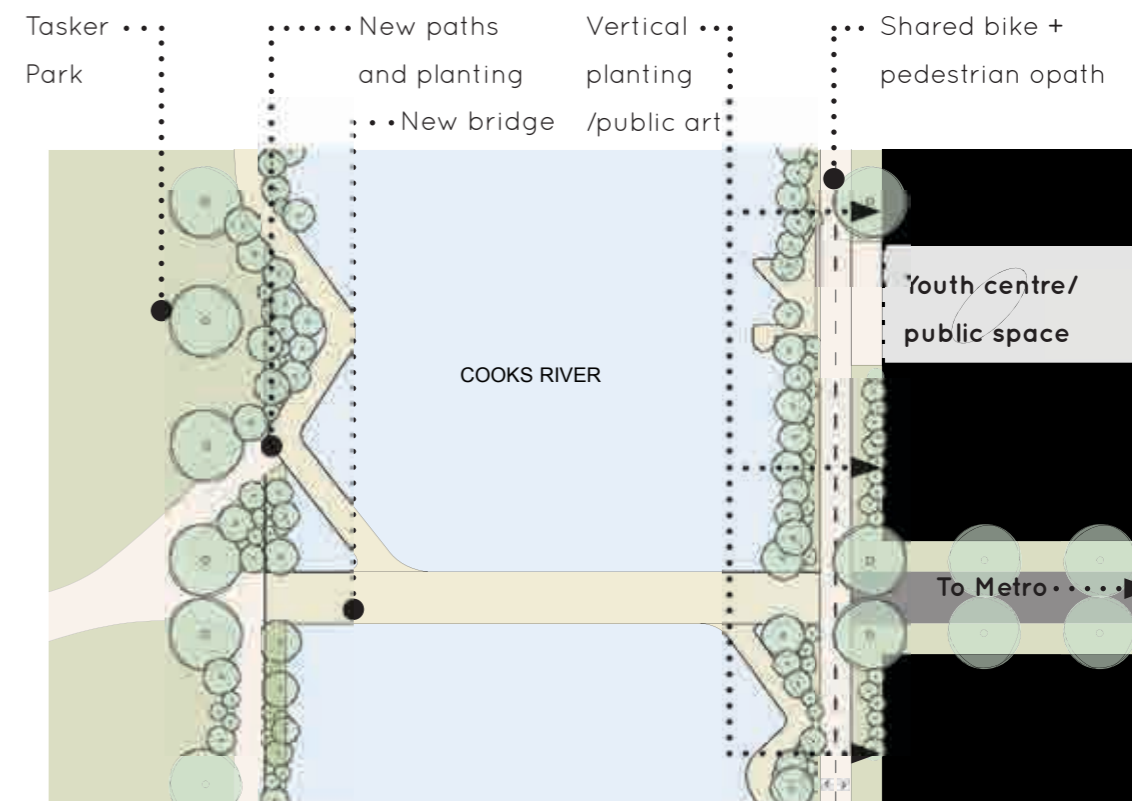


Existing view from Tasker Park

Existing view from St Mary McKillop Reserve



Proposed Sections Tasker Park/River



Proposed Sections Tasker Park/River

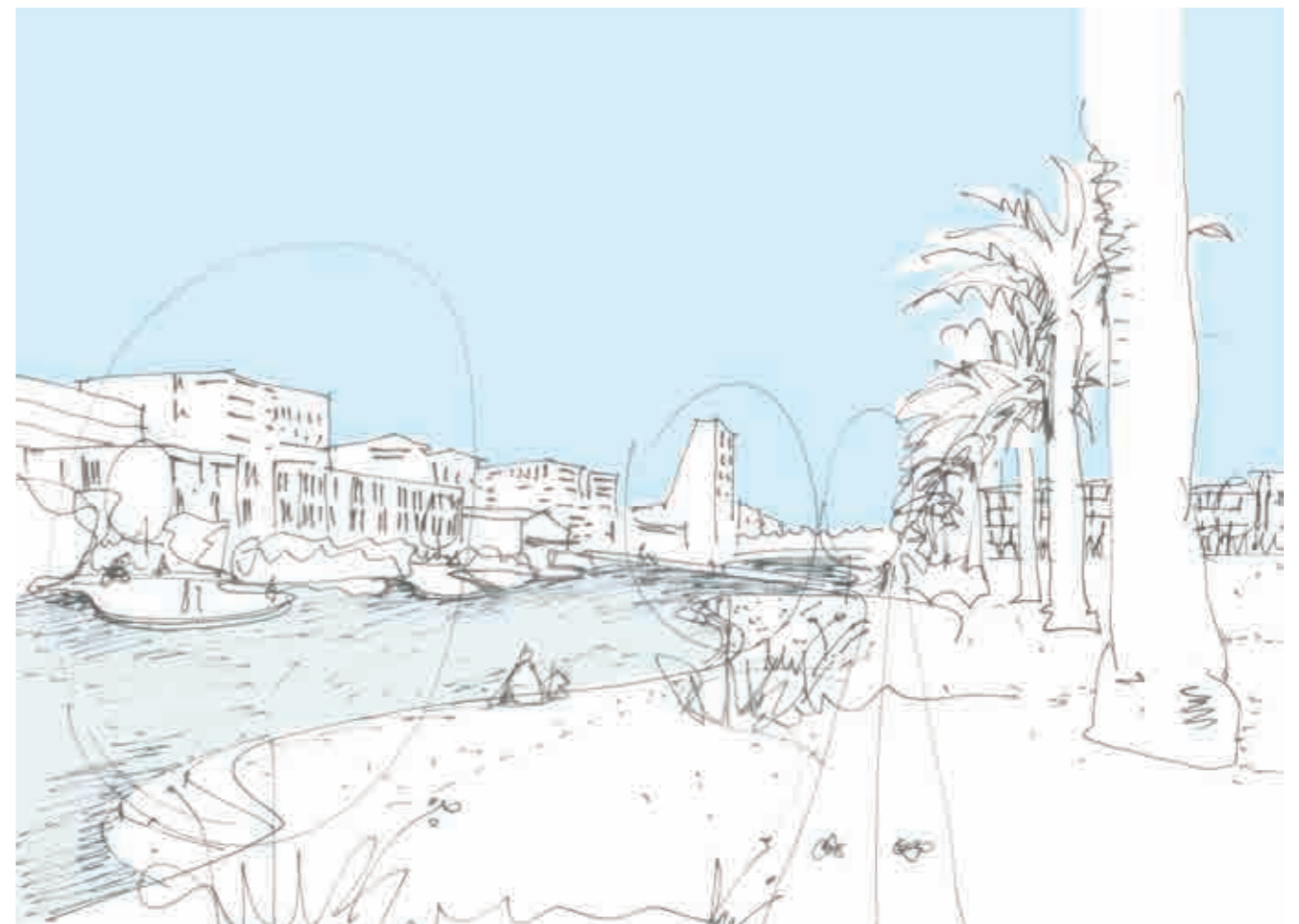
NOTE: Existing new development is too close to riverfront.
Future development subject to improved controls



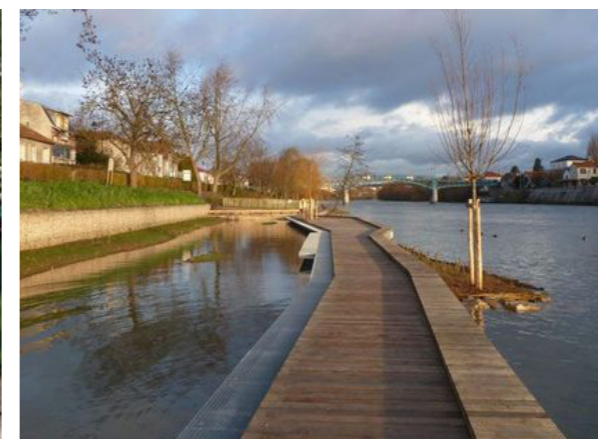
Location



Existing view from Tasker Park



Proposed view from Tasker Park with improved edge condition, enlivened waterfront, new pedestrian bridge + increased density at riverfront

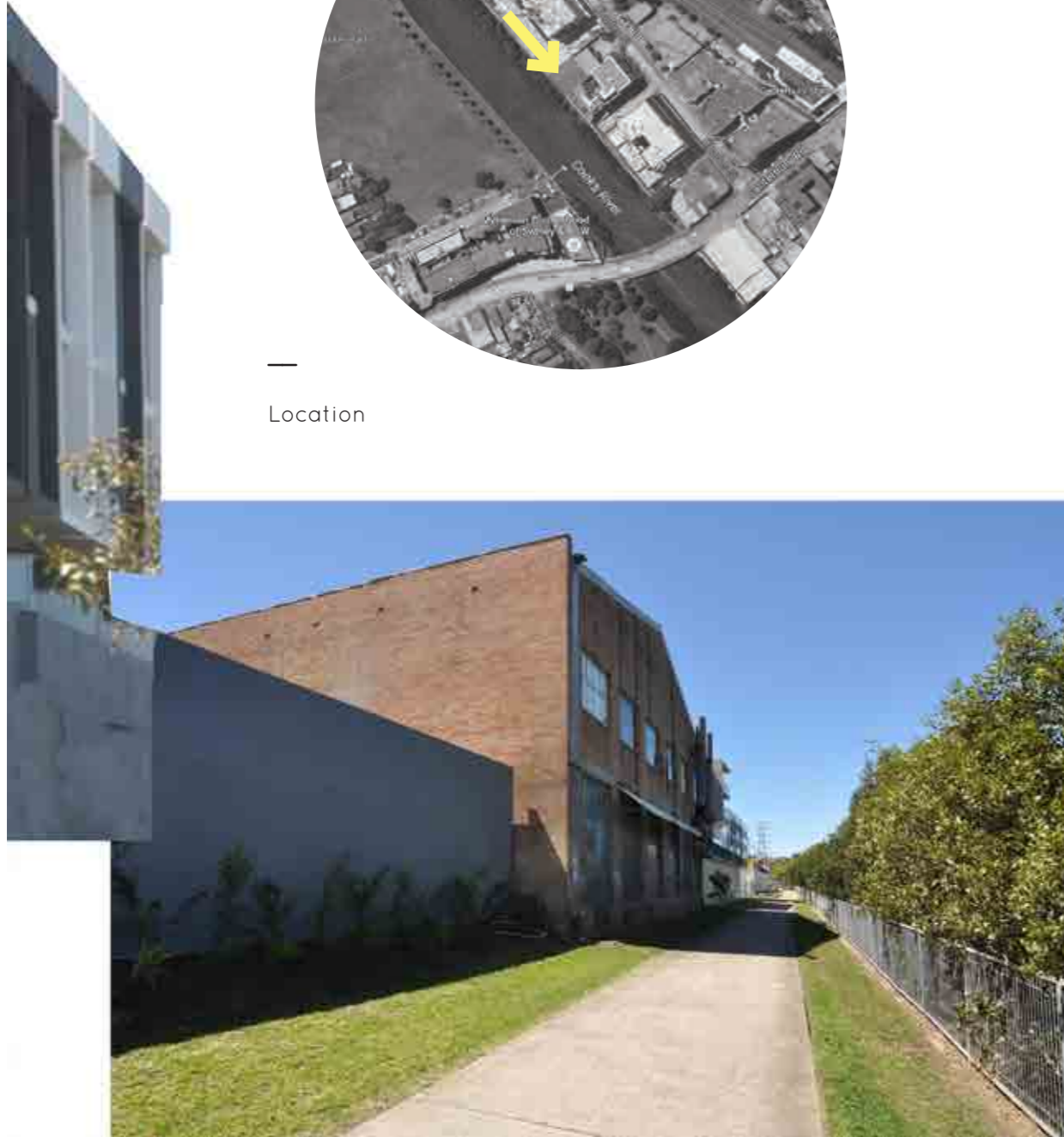


Precedents - River edge

Examples of active and passive engagement with the river front



Location



Existing View along North side of Cooks River looking towards Canterbury Rd



Proposed View with youth centre and improved edge condition. New landscaping, platforms over river, planting, public art and improved existing residential edge

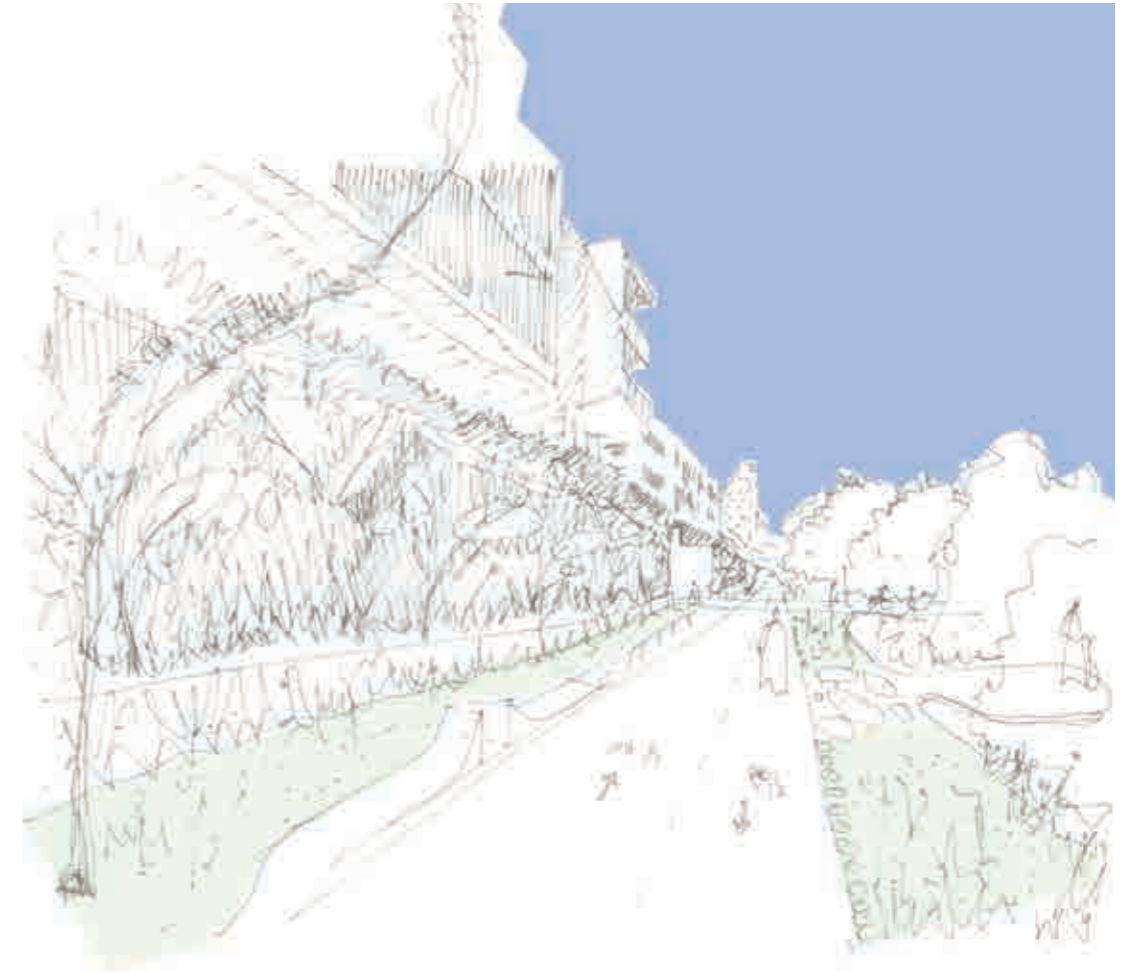
4.4 RIVER FRONT PARKS



Location



Existing view along North side of Cooks River looking towards Canterbury Rd



Proposed view with improved edge condition



Precedents - River front parks

Active engagement / recreation / youth activity



Location



Existing View on Burna St looking towards Canterbury Rd



Proposed View with increased density at park edge, overlooking park and river

