

LEGEND


6232000mN GDA94/MGA94 Grid (Zone 56)

Precinct boundary

Homestead boundary

205 Test Pit where sodicity of soil at 1.5m depth was >15 (highly sodic)

Test Pit where sodicity of soil at 0.5m depth was <5 (non-sodic)



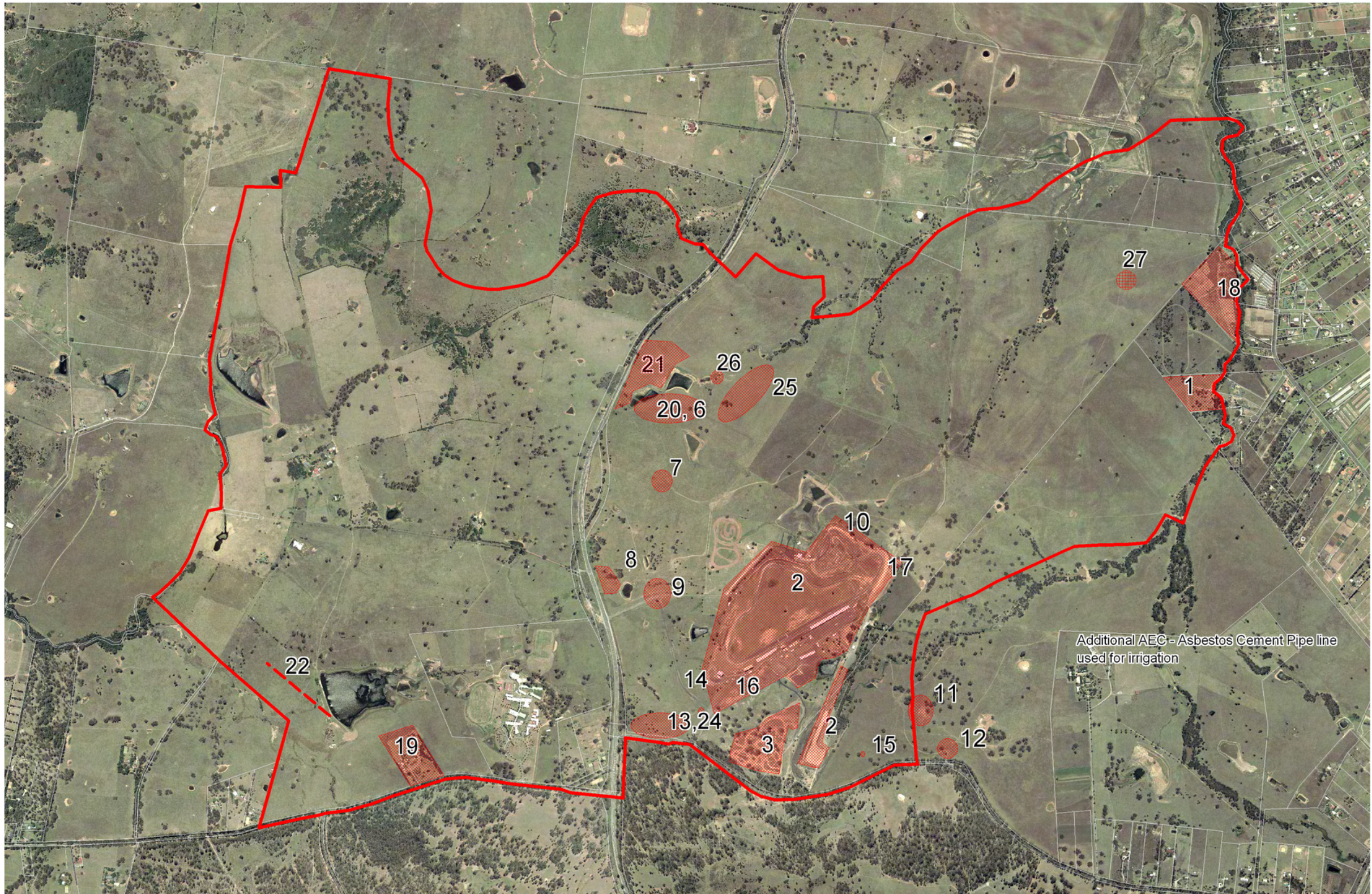
Douglas Partners

Geotechnics . Environment . Groundwater

Sydney, Newcastle, Brisbane,
Melbourne, Perth, Darwin,
Wyong, Campbelltown, Canberra
Townsville, Cairns, Wollongong

TITLE: **SODICITY - 1.5m
LAND CAPABILITY STUDY
ORAN PARK PRECINCT
ORAN PARK AND COBBITTY**

CLIENT: APP CORPORATION PTY LTD			
DRAWN BY: JL	SCALE: 1:20,000 @ A3	PROJECT No: 40740	OFFICE: SYDNEY
APPROVED BY:		DATE: FEBRUARY 2007	DRAWING No: 21



Douglas Partners
Geotechnics . Environment . Groundwater

Sydney, Newcastle, Brisbane,
 Melbourne, Perth, Darwin,
 Wyong, Campbelltown, Canberra
 Townsville, Cairns, Wollongong

TITLE: **AREAS OF ENVIRONMENTAL CONCERN
 LAND CAPABILITY ASSESSMENT
 ORAN PARK PRECINCT
 ORAN PARK AND COBBITTY**

CLIENT: GROWTH CENTRES COMMISSION

DRAWN BY: CCK

SCALE: NTS

PROJECT No: 40470

OFFICE: WOLLONGONG

APPROVED BY:

DATE: 15 MARCH 2007

DRAWING No: **22**

APPENDIX B

Photographic Plates



Photograph 1: Site is generally characterised by gently undulating and cleared paddocks



**Photograph 2: Steeper ground is found in the north western portion of the site
(See photograph background)**

Oran Park
Oran Park

40740

February 2007



Photograph 3: Structures associated with army use



Photograph 4: Filling in creek

Oran Park
Oran Park

40740

February 2007



Photograph 5: PAEC 33 stripped area (no fill)



Photograph 6: PAEC 33 stripped area (no fill)

**Oran Park
Oran Park**

40740

February 2007