

Mist Play

Three misting poles are proposed as an area where children can play in the water mist and cool down on a hot day.

Dry Creek

A dry creek is proposed to represent the nearby Warragamba Dam. The name Warragamba comes from the aboriginal words Warra and Gamba meaning water running over rocks. The dry creek proposes a series of weirs the children can operate to control the water flow over boulders. Interpretive signage will be installed near the dry creek to explaining this. **Local history art carved rocks will feature around the dry creek.**

Water Play

A water play area is proposed. The area will feature a water pump and a series of troughs at different heights and different activities. The water then flows into the dry creek.

Trampoline

A large in-ground trampoline is proposed in an area of wet pour rubber. Games such as hop-scotch are proposed in the rubber surrounding the trampoline.

Carousel

A wheelchair accessible carousel is proposed where children of all abilities can experience spinning around together. The carousel also represent a carousel that was at Sonny's Funland and carousel at Kurung Muru.

Jungle Walk

The jungle walk represents Bullen's Animal World and Lion Safana that operated near Warragamba from 1968 - 1991. The jungle walk consists of jungle themed entry gates, lion sculptures, play jeep, hammock, tactile timber totems and speaking tubes.

Entrance

It is proposed to replace the existing wall along Fourteenth Street with a new sandstone block wall and a set of new wide stairs up from the car parking area. The footpath along Fourteenth Street is also proposed to be replaced as it is in poor condition. **The entry walls will also feature art tiles created by local children.**

Swings

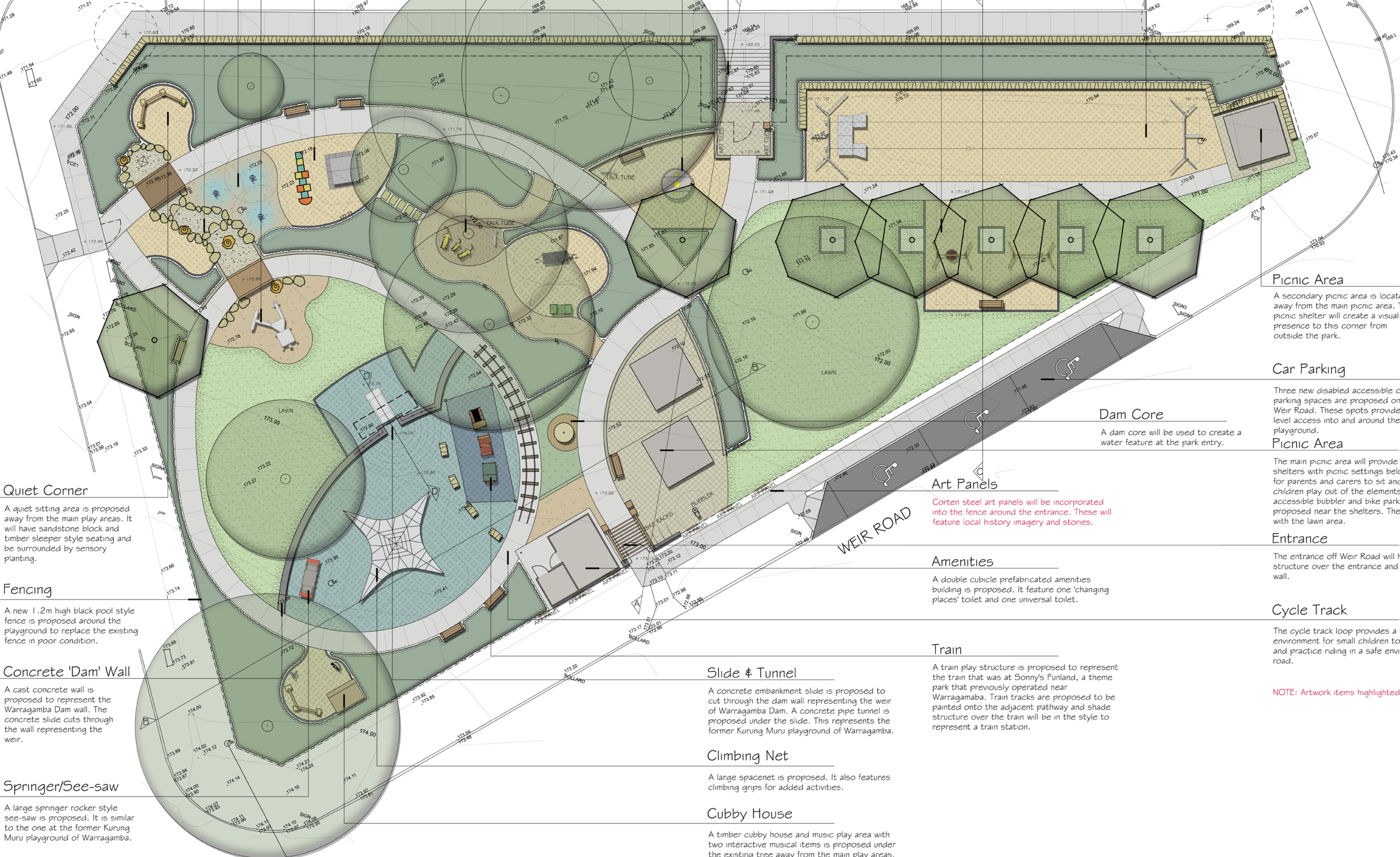
The swing area features two timber swing sets. One swing set will have a basket swing and the other an expression or facing seat and an all abilities seat. The swings will be in a rubber safety surfacing. The swing play area is located away from more passive play areas.

Cableway

A large double cableway is proposed with wet pour rubber safety surface providing opportunities for children to play together.

LEGEND

- EXISTING LEVELS
- PROPOSED LANDSCAPE LEVELS
- PROPOSED TREES
- PROPOSED MASS PLANTING AREAS
- NEW TURF AREAS
- PROPOSED PLAIN CONCRETE PATHS
- COLOURED CONCRETE PAVING
- EXPOSED AGGREGATE PAVING
- WET POUR RUBBER SAFETY SURFACE
- MULCH
- SYNTHETIC GRASS
- PERMEABLE PEBBLE PAVING
- SANDSTONE BLOCK WALLS
- CONCRETE BLOCK WALLS WITH CLADDING & CAPPING
- CONCRETE BLOCK WALLS WITH CAPPING
- CONCRETE 'DAM' WALL
- BRICK GARDEN EDGING
- SANDSTONE BOULDERS
- CARVED SANDSTONE LOCAL HISTORY ART BOULDERS
- SANDSTONE STEPPING STONES
- LOCAL HISTORY ARTWORK PANELS ON FENCE
- BENCH SEATS



Picnic Area

A secondary picnic area is located away from the main picnic area. The picnic shelter will create a visual presence to this corner from outside the park.

Car Parking

Three new disabled accessible car parking spaces are proposed on Weir Road. These spots provide level access into and around the playground.

Picnic Area

The main picnic area will provide two picnic shelters with picnic settings below as an area for parents and carers to sit and watch the children play out of the elements. An accessible bubbler and bike parking are also proposed near the shelters. The shelters link with the lawn area.

Entrance

The entrance off Weir Road will have a pergola structure over the entrance and a feature entry wall.

Cycle Track

The cycle track loop provides a safe environment for small children to learn to ride and practice riding in a safe environment off the road.

NOTE: Artwork items highlighted in red.

Quiet Corner

A quiet sitting area is proposed away from the main play areas. It will have sandstone block and timber sleeper style seating and be surrounded by sensory planting.

Fencing

A new 1.2m high black pool style fence is proposed around the playground to replace the existing fence in poor condition.

Concrete 'Dam' Wall

A cast concrete wall is proposed to represent the Warragamba Dam wall. The concrete slide cuts through the wall representing the weir.

Springer/See-saw

A large springer rocker style see-saw is proposed. It is similar to the one at the former Kurung Muru playground of Warragamba.

Dam Core

Art Panels

Corten steel art panels will be incorporated into the fence around the entrance. These will feature local history imagery and stones.

Amenities

A double cubicle prefabricated amenities building is proposed. It feature one 'changing places' toilet and one universal toilet.

Train

A train play structure is proposed to represent the train that was at Sonny's Funland, a theme park that previously operated near Warragamba. Train tracks are proposed to be painted onto the adjacent pathway and shade structure over the train will be in the style to represent a train station.

Slide & Tunnel

A concrete embankment slide is proposed to cut through the dam wall representing the weir of Warragamba Dam. A concrete pipe tunnel is proposed under the slide. This represents the former Kurung Muru playground of Warragamba.

Climbing Net

A large spacenet is proposed. It also features climbing grips for added activities.

Cubby House

A timber cubby house and music play area with two interactive musical items is proposed under the existing tree away from the main play areas.

